

# Wiz Code

## Application and developer security, powered by cloud context

Wiz Code provides comprehensive visibility and control throughout the development lifecycle. By integrating security into code repositories and CI/CD pipelines, it enables teams to map vulnerabilities from code to cloud infrastructure, prioritize risks based on impact, and accelerate remediation with precise, cloud-aware fixes.

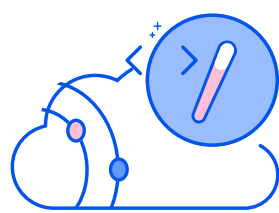
Modern development practices like DevOps and Infrastructure-as-Code (IaC) have blurred the lines between applications and cloud infrastructure, introducing new security challenges. Traditional application security tools, with their fragmented nature and lack of context, struggle to keep up—overwhelming teams with alerts and leaving critical blind spots that increase exposure.

Wiz Code addresses these challenges with a unified platform, powered by the Wiz Security Graph, where development and security teams collaborate seamlessly. By leveraging deep cloud context, Wiz Code surfaces critical risks, implements proactive guardrails, and accelerates remediation—helping developers stay focused without compromising security.



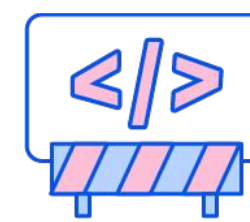
### Complete visibility and control

Gain full visibility into how cloud resources connect to code repositories and developers in the Wiz Security Graph. With this level of insight and control, your security teams can identify, prioritize, and empower developers to remediate issues faster and more effectively, thanks to precise fix suggestions.



### Unified security across all stages

Enforce consistent policies for vulnerabilities, hardcoded secrets, IaC misconfigurations, and more across the entire development lifecycle. Wiz's "define once, embed everywhere" approach makes it easier for your development and security teams to speak the same language, ensuring alignment on priorities.



### Developer guardrails—not gates

Meet developers where they work—whether in the IDE, pull requests, or CI workflows. Wiz Code delivers contextual security feedback early in the process, helping developers understand how insecure code impacts their applications in the cloud. By surfacing critical findings and offering one-click fix suggestions, developers can fix issues as they go and stay secure from code to cloud.

Trusted by the world's best brands



Morgan Stanley



LVMH

priceline





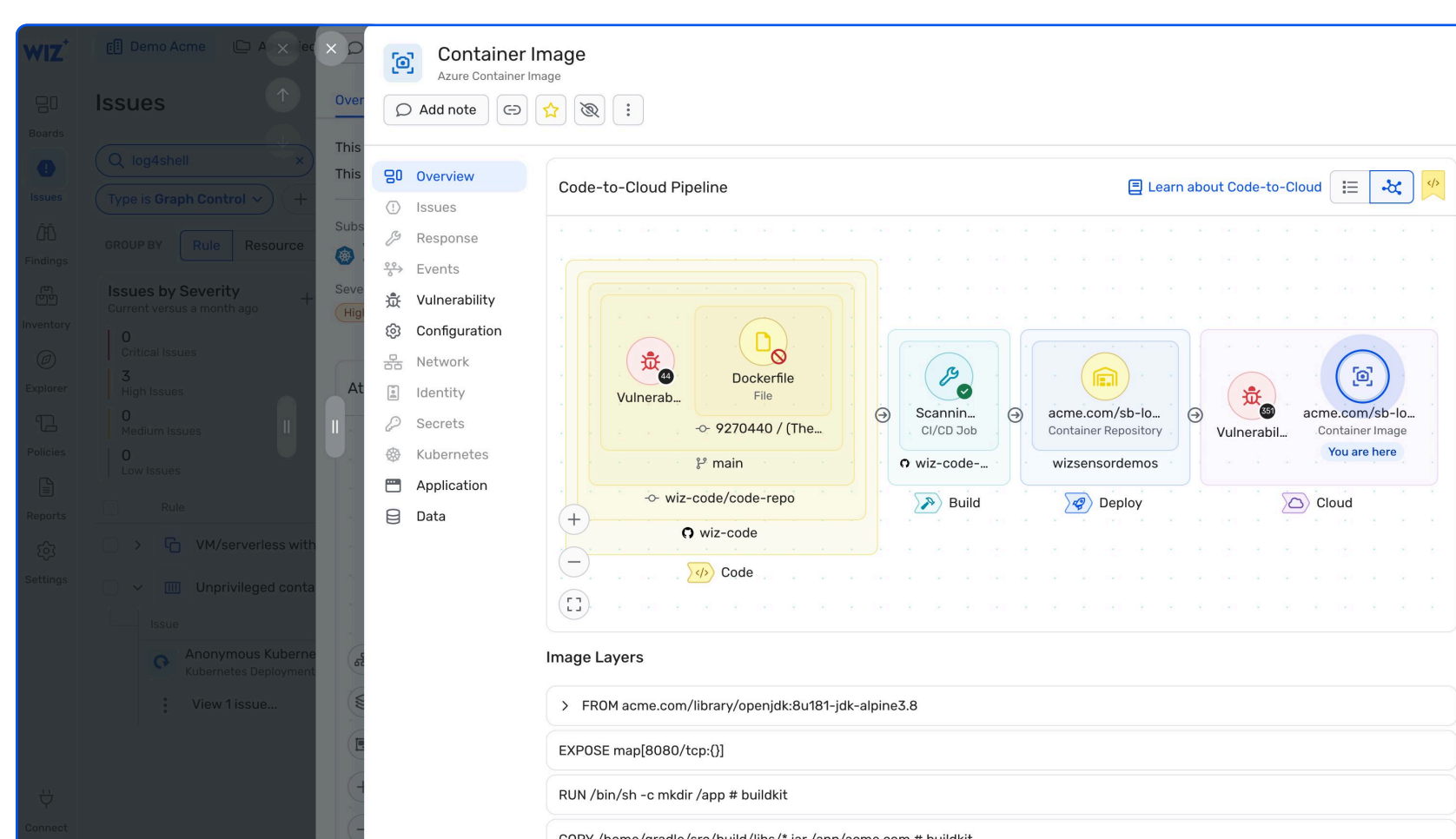
## Unify security across developer and cloud environments. Connect insecure code to its cloud impact to fix issues faster and prevent new risks from becoming toxic combinations.

### Cloud context for code and application security

- **Unified visibility and context:** Wiz Code connects code repositories, pipelines, and cloud environments, giving teams a single, comprehensive view of risks throughout the development lifecycle. It enables clear ownership, helping security and development teams quickly identify who is responsible for each issue.
- **Accurate remediation:** Map misconfigurations and vulnerabilities directly back to their source in the code or pipeline. Empower developers with 1-click pull requests that include all the context necessary for fast and effective remediation.
- **Proactive guardrails:** Provide developers with real-time security feedback in IDEs, pull requests, and CI workflows. Pre-configured and customizable policies enable developers to address critical risks early, reducing context switching and ensuring secure code from the start.

### Built-in code and CI/CD security scanners

- **Secure and govern open-source usage** with Software Composition Analysis (SCA) and Software Bill of Materials (SBOM) capabilities. Find and fix vulnerabilities in direct and transitive dependencies.
- **Secure cloud infrastructure at the source** with over 1,400 rules for IaC (Terraform, Kubernetes...) and prevent misconfigured resources from being deployed.
- **Detect and eliminate secrets** and non-human identities (NHIs) from your codebase, build pipelines, and more. Wiz ensures sensitive credentials are caught early, blocking lateral movement or privilege escalation.
- **Protect sensitive data** such as PII or PHI directly within your codebase. Help software and AI engineering teams meet compliance and regulatory requirements.
- **Block malware** in code and stop threats before they enter CI runners or cloud workloads. Protect against threats like ransomware and compute resource theft.
- **Harden VCS and CI/CD systems** by scanning for misconfigurations and insecure defaults, building trust in your delivery pipeline and aligning it with industry standards (OWASP TOP10 CI/CD Risks, OpenSSF SCM Best Practices, etc.).



Wiz secures everything organizations build and run in the cloud. Founded in 2020, Wiz is the fastest-growing software company in the world, scaling from \$1M to \$100M ARR in 18 months. Wiz enables hundreds of organizations worldwide, including 35 percent of the Fortune 100, to rapidly identify and remove critical risks in cloud environments. Its customers include Salesforce, Slack, Mars, BMW, Avery Dennison, Priceline, Cushman & Wakefield, DocuSign, Plaid, and Agoda, among others. Wiz is backed by Sequoia, Index Ventures, Insight Partners, Salesforce, Blackstone, Advent, Greenoaks, Lightspeed and Aglaé. Visit <https://www.wiz.io/> for more information.



As a security engineering lead, I've spent years searching for a way to connect our cloud infrastructure teams with application security teams. What sets Wiz apart is its ability to map code-level vulnerabilities directly to cloud infrastructure risks, like compromised IAM roles or internet-wide exposed ports. The biggest value we've found in Wiz Code is how it brings our teams together under one unified platform. We can now understand the full attack path, from exploitable code to cloud misconfigurations, and remediate these risks with a one-click fix in code.

Danny Robinson,  
CyberSec Engineering Manager, AppsFlyer



Wiz Code has helped shift left our security responsibilities. Teams are now catching and fixing issues before they get deployed and coming to us earlier for help designing their solutions. Having source repositories directly in Wiz also has helped us ensure projects are scoped to their actual owners, as a lot of accounts are shared. Having that direct sourcing to the repos speeds up triage for us as well.

Rory Carson,  
Security Engineer, Contentful



The hallmark of Wiz is to combine visibility with context for the benefit of individuals across multiple teams. Comprehensive code to cloud security is yet another key that unlocks the true promise of CNAPP. Wiz Code comes at an opportune moment: businesses are thirsting for platform solutions that enable innovation, agility, and scale.

Philip Bues,  
Senior Research Manager, IDC

