

Vulnerability Exposure

AI Aware

Header

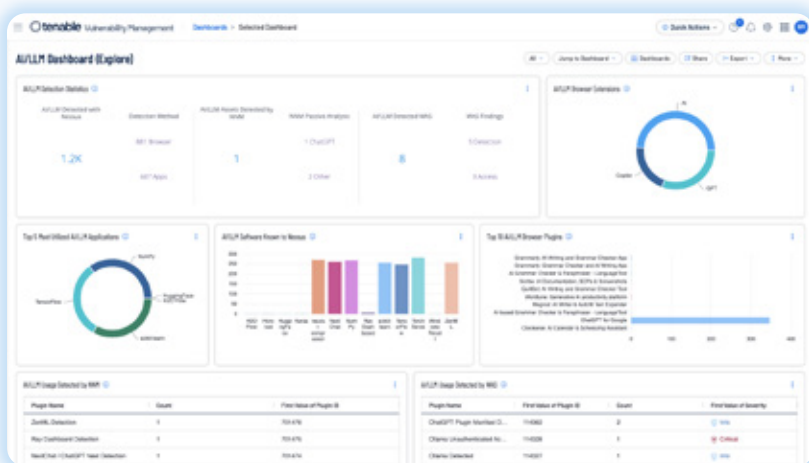
Expose and close your AI risk

As AI technologies rapidly evolve, you may find it challenging to keep track of unauthorized AI software, libraries, and browser plugins in your environment, which can threaten your data security and compliance efforts. The complexity of AI software often introduces new vulnerabilities that could lead to exploitation or breaches, leaving your systems exposed. Additionally, unexpected or unsanctioned AI model development, such as large language models (LLMs), can result in data leakage, misalign with your organization's development best practices, and cause unexpected resource consumption, further complicating your security posture.

How Tenable AI Aware can help

Tenable AI Aware offers you a powerful set of tools to address these challenges. By leveraging advanced detection technologies—including agents, passive network monitoring, dynamic application security testing, and distributed scan engines—you can effectively monitor and document unauthorized AI solutions across your environment.

Tenable AI Aware helps you identify vulnerabilities in AI-related software, libraries, and browser plugins, enabling you to mitigate risks before they can be exploited. Moreover, you'll be able to uncover unexpected or unknown AI model development within your organization, ensuring these initiatives align with your standards and don't drain resources unexpectedly.



Instantly visualize key AI-related vulnerabilities and asset insights.

Key benefits

- ➔ **Surface unauthorized use of AI**
Leverage agents, passive network monitoring, dynamic application security testing and distributed scan engines to detect AI software, libraries and browser plugins.
- ➔ **Detect AI vulnerabilities**
Get the most comprehensive capability to detect vulnerabilities in AI software, libraries, in-house developed web applications and browser plugins across your assets.
- ➔ **Illuminate AI development**
Use comprehensive detection and multi-layered assessment approaches to uncover the building blocks of AI development within your environment.

Key capabilities

Dashboard views

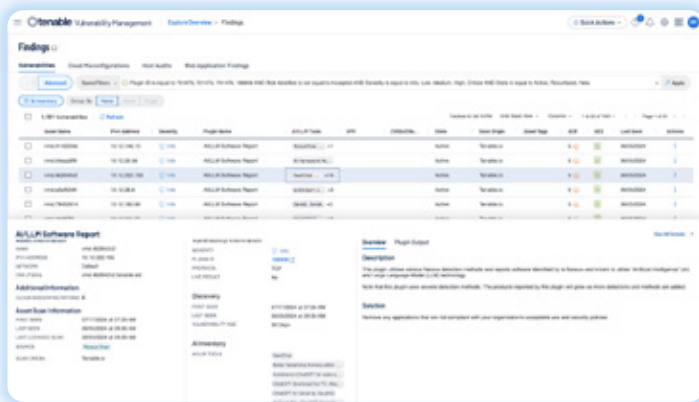
Stay informed on the most frequently discovered AI software, top assets with AI-related vulnerabilities, and commonly used communication ports by AI technologies.

Findings filter for AI detections

Quickly focus on AI-related findings during vulnerability assessments to address critical issues promptly

Asset-centric AI inventory

Access a complete inventory of AI-related packages, libraries, and browser plugins while reviewing detailed asset profiles.



Quickly access and manage your comprehensive AI software inventory.

Unapproved software identification

Detect instances of unauthorized AI software, libraries, and browser plugins across your environment.

Vulnerability detection

Assess and prioritize vulnerabilities introduced by AI software packages, libraries, and browser plugins in systems, browsers, and web applications.

Data leakage mitigation

Identify browser plugins and communication interfaces built into assessed web applications. Software of this nature can create the potential for sensitive information disclosures.

Unexpected resource consumption monitoring

Identify resource-intensive AI software to highlight key areas to monitor system performance.

Shadow software development detection

Discover the libraries commonly used to develop Large Language Models to ensure AI development projects align with organizational best practices.

About Tenable

Tenable® is the exposure management company, exposing and closing the cybersecurity gaps that erode business value, reputation and trust. The company's AI-powered exposure management platform radically unifies security visibility, insight and action across the attack surface, equipping modern organizations to protect against attacks from IT infrastructure to cloud environments to critical infrastructure and everywhere in between. By protecting enterprises from security exposure, Tenable reduces business risk for more than 44,000 customers around the globe. Learn more at www.tenable.com.

Contact Us

Please email us at sales@tenable.com or visit tenable.com/contact.