

Vulnerability Exposure

The world's #1 vulnerability management solution managed on-prem



Expose and close your cyber weaknesses with the world's #1 vulnerability management solution — managed on-prem

The Tenable Security Center platform provides the most comprehensive and integrated view of your enterprise security posture to accurately identify, investigate and prioritize vulnerabilities, on-prem. Tenable Security Center, a market leading vulnerability management solution, provides visibility into your dynamic attack surface so you can manage and measure your cyber exposures. Through advanced analytics, customizable dashboards, reports and workflows, Tenable Security Center helps you understand your exposures and know which vulnerabilities to fix first. Built on leading Nessus technology, Tenable Security Center gathers and evaluates vulnerability data across multiple Nessus® scanners distributed across your enterprise and illustrates vulnerability trends over time to assess business risk and prioritize vulnerabilities.

Tenable Security Center includes Predictive Prioritization, which combines data and threat intelligence across multiple sources, and analyzes them all with a data science algorithm that uses machine learning to anticipate the probability of a vulnerability being leveraged by threat actors. Get real-time insight to help you prioritize patching and understand which vulnerabilities to remediate first.

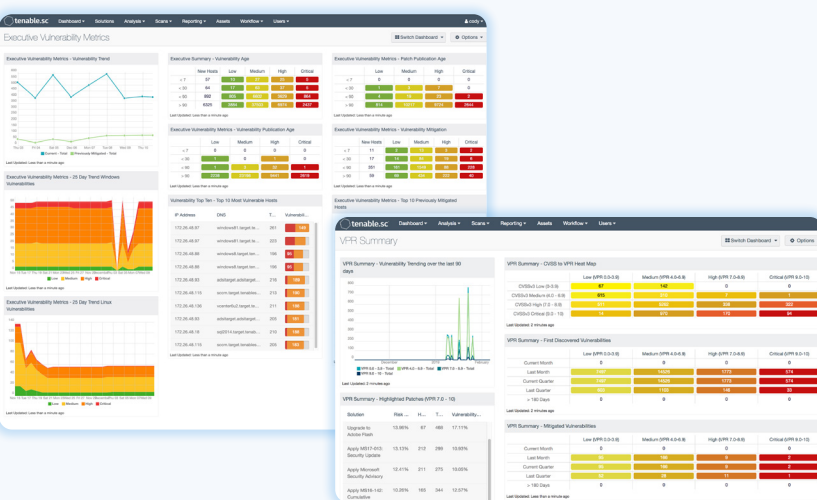


Figure 1: Highly customizable dashboards, reports, workflows and security policies to suit your specific business needs.

Key benefits

- ➔ **Continuous visibility**
Continuously track known and discover unknown assets and their vulnerabilities. Identify threats and unexpected network changes before they turn into breaches.
- ➔ **Prioritize vulnerabilities**
Combine asset and vulnerability data, threat intelligence and data science for easy to understand risk scores to quickly identify the vulnerabilities and their most critical assets that pose the highest business risk.
- ➔ **Breadth and depth of coverage**
Tenable Research works closely with the security community to discover new vulnerabilities and provide insights to help organizations mature their vulnerability assessment practices. With more than 88K vulnerabilities, Tenable has the industry's most extensive CVE and security configuration support to help you understand all of your exposures.
- ➔ **Automate processes**
Leverage a fully documented API and pre-built integrations to import third-party data, automate scans, and share data with your IT systems.

Key capabilities

Manage your data, your way

Tenable Security Center is the leading on-prem option for vulnerability management. Manage your data your way with on-prem or hybrid deployment options that align with your most complex deployment requirements, all while reducing business risk.

Comprehensive assessment options

Tenable Security Center gives you unified visibility of your entire attack surface. It leverages Nessus Sensors, a mix of active scanners, agents, passive network monitoring, and CMDB integrations to maximize scan coverage across your infrastructure to reduce vulnerability blind spots. This mix of data sensor types helps you track and assess both known and unknown assets and their vulnerabilities.

Passive asset discovery

Discover and identify IT assets that hit your network that include servers, desktops, laptops, network devices, web apps, virtual machines, mobile and cloud.

Vulnerability prioritization based on actual risk

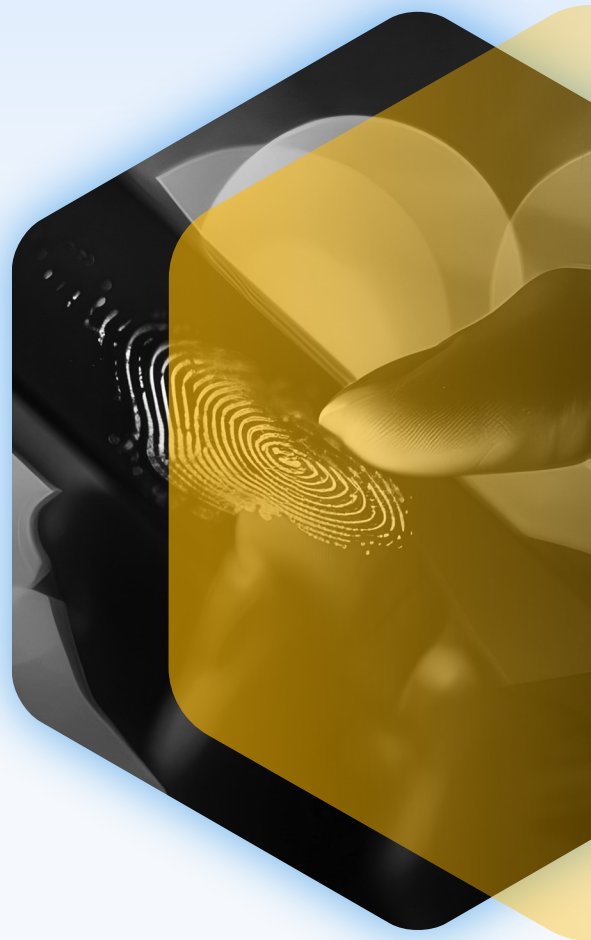
Tenable Security Center combines vulnerability data, threat intelligence and data science to give you an easy to understand risk score so you can prioritize vulnerabilities and know what to fix first. You can quickly assess risk and identify vulnerabilities with the highest impact to your organization.

Simplified vulnerability management

With intuitive reports, dashboards visualizations and an easy to use interface, Tenable Security Center makes common tasks, such as configuring scans, running an assessment, and analyzing results, easier than ever. Predefined scan templates, configuration and compliance audit checks that follow best practices frameworks to help you protect your organization with a fraction of the effort otherwise needed. Customize your reporting and analysis with pre-configured, out-of-the-box dashboards or quickly build your own from a blank canvas to meet organizational needs.

Streamlined compliance

Understand and report on compliance with pre-defined checks, metrics and proactive alerts on violations for industry standards and regulatory mandates. Industry standards include CERT, NIST, DISA STIG, DHS CDM, FISMA, PCI DSS, HIPAA/HITECH and many more.



On-prem web app scanning integration

Easily integrate your Tenable Security Center data with on-prem Tenable Web App Scanning. Configure new scans and analyze web application exposures within the Tenable Security Center UI. Tenable Web App Scanning provides easy-to-use, comprehensive and automated vulnerability scanning for modern web apps so you can rapidly assess your web applications without heavy manual effort.

Tenable Research

Tenable Security Center is backed by Tenable Research, delivering world-class Cyber Exposure intelligence, data science insights, alerts and security advisories. Frequent updates from Tenable Research ensure the latest vulnerability checks, zero-day research, and configuration benchmarks are immediately available to help you secure your organization.

Leverage Tenable Security Center Director

Tenable Security Center Director is an add-on to provide centralized management and view of your risk posture to reduce complexity and to gain complete visibility across multiple consoles for your entire deployment.

Pre-built integrations and a documented API and integrated SDK

Tenable Vulnerability Management has out-of-the-box integrations available for credentialed scanning, SIEM, SOAR, ticketing and patching systems and other complementary solutions, so you can easily streamline your vulnerability management process. Additionally, you can easily create your own integrations with Tenable Security Center by leveraging a fully documented API. There is no extra cost to use these tools to maximize the value of your specific vulnerability management use cases.

About Tenable

Tenable® is the exposure management company, exposing and closing the cybersecurity gaps that erode business value, reputation and trust. The company's AI-powered exposure management platform radically unifies security visibility, insight and action across the attack surface, equipping modern organizations to protect against attacks from IT infrastructure to cloud environments to critical infrastructure and everywhere in between. By protecting enterprises from security exposure, Tenable reduces business risk for more than 44,000 customers around the globe. Learn more at www.tenable.com.

Contact Us

Please email us at sales@tenable.com or visit tenable.com/contact.