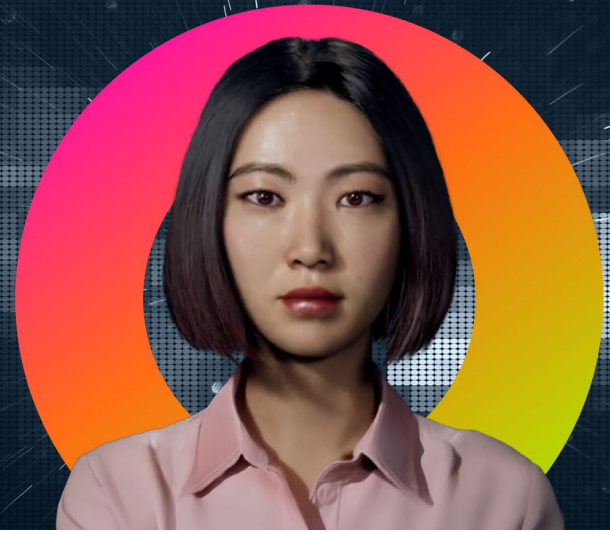




SHI Digital AI Ambassador Platform

The Enterprise Solution Platform
for AI Digital Humans



While organizations recognize the competitive advantage of emotionally intelligent digital experiences, IT teams face significant deployment barriers: Complex integrations, unclear Return on Investment (ROI) timelines, security compliance hurdles, and vendor solutions that look great in demos but fall short in production.

Having witnessed numerous AI digital human projects falter during development or fail to scale, SHI's engineering team crafted a unique and effective solution.

By collaborating directly with NVIDIA and HPE experts in our AI & Cyber Labs, we've solved the most common implementation roadblocks. The result? Production-ready Digital AI Ambassadors deployed in just six weeks – with predictable costs, built-in compliance, and measurable business outcomes.

Addressing core IT implementation challenges

- **Integration made simple.** Avoid lengthy integration, testing and last-minute compatibility issues. SHI deploys pre-validated AI models such as NVIDIA NIM microservices on HPE Private Cloud AI, proven across dozens of enterprise environments.
- **Built-in security and compliance.** Security and compliance frameworks are embedded in the architecture. Your security teams can review standardized controls—no need to vet custom implementations—accelerating audits and approvals.
- **Predictable infrastructure planning.** Choose from modular Small, Medium, or Large configurations with clearly defined and validated full-stack applications, compute, storage, and network requirements. No surprises, no guesswork.
- **Deployment you can count on.** Go live in just six weeks. SHI's AI engineers handle model training and system integration, so your internal teams can stay focused on delivering business value.

AI-driven performance gains

- **Retail:** Up to 15% conversion, and 20% average order value through contextually relevant responses and with multilingual NLP for global reach.¹
- **Financial Services:** 10-25% savings in support costs, through regulatory-aligned AI self-service.²
- **Healthcare:** Up to 30% missed appointments and improved patient retention.³
- **Education:** 40% improvement in student with AI virtual assistants.⁴

1. McKinsey & Company. (2020, April 18). *Personalizing the customer experience: Driving differentiation in retail.*
2. McKinsey & Company. (2021, March 2). *The transformative power of automation in banking.*
3. Healthcare IT News. (2021, November 15). *This FQHC slashed its patient no-show rate with AI in 3 months.*
4. The Dev Masters. (n.d.). *How AI integration in education increases student engagement by 40%.*



SHI's Digital AI Ambassador Platform

Technical architecture and infrastructure

Request detailed technical specifications and reference architectures for your industry vertical.

NVIDIA AI Enterprise



NVIDIA AI Enterprise empowers businesses to build and deploy cutting-edge AI Solutions transforming customers with scalable, secure, and high-performance AI solutions.



Offers sophisticated AI processing that surpasses conventional chatbot capabilities, elevating customer engagement to new levels.



NIM microservices is a set of easy-to-use microservices for secure, reliable, and high-performance AI deployment. NVIDIA NIM supports a wide range of AI models including open-source community and NVIDIA AI Foundation models. NVIDIA NIM ensures seamless, scalable AI inferencing with industry standard APIs in the customer's on-premises infrastructure.

HPE integrated solution



HPE Private Cloud AI efficiently manages demanding AI workloads, supporting the deployment of AI solutions with robust performance and reliability.



Provides flexible hybrid deployment options to meet data sovereignty needs while ensuring seamless integration with cloud scalability requirements.



Provides a secure and optimized platform to accelerate AI innovation, reducing operational complexity for IT teams.



Includes HPE AI Essentials – a pre-integrated environment for AI data, tools, and models to streamline workflows for data engineers and scientists.

SHI integration framework



The SHI Integration Framework streamlines the deployment of AI solutions by simplifying complex integrations, ensuring seamless connectivity across systems, and reducing IT bottlenecks for faster, more secure implementation.



Enables effortless integration with existing data, knowledge management, and business applications, eliminating the need for costly system replacements.



Features a flexible architecture that supports everything from department-specific pilots to enterprise-wide rollouts, with Kubernetes orchestration for automatic scaling and DevOps integration for standardized, validated application deployment processes.

SHI's six-week implementation methodology

SHI has refined deployment procedures through hundreds of enterprise implementations, eliminating common project obstacles through proven methodologies. Review implementation planning specific to your organizational requirements.



**Implementation timeline reflects methodology refinement through extensive production experience. Customers typically achieve measurable results within 30 days of deployment.*

SHI engineering expertise + NVIDIA and HPE partnership advantages



With decades of enterprise IT experience, SHI brings a team of 100+ AI/ML engineers, dedicated AI & Cyber Labs, and deep expertise in full-stack AI integration, MLOps, and custom LLM application development.



Provides industry-leading AI Enterprise technology and frameworks, including NIMs for rapid deployment and low-latency inference, while directly providing engineering collaboration with SHI to accelerate solution development.



**Hewlett Packard
Enterprise**

Delivers secure, scalable Private Cloud for AI (PCAI)—optimized for high-performance training and inference workloads, with proven reliability in enterprise environments.

Ready to imagine, experiment, and adopt?

SHI provides comprehensive requirement reviews, platform demonstrations with client-specific use cases, and detailed implementation planning with fixed costs and delivery timelines. Contact our AI solutions team at AISolutions@SHI.com. Ask for the "Digital Brand Ambassador technical briefing" — we'll have the right architects on the call.

Transform customer engagement through proven AI development and deployment expertise.

Learn more



Start your journey by contacting a specialist at AISolutions@SHI.com

SHI International Corp. \ \ SHI.com \ \ 888-764-8888 \ \ 3

