



SOLUTIONS FOR BUSINESS: TEAM WORKSPACE

An Interactive Guide



ROLL OVER EACH PRODUCT SPOT FOR DETAIL

THE NEW TEAM WORKSPACE

In an enterprise landscape made up of in-office, hybrid, and remote workers, team collaboration can be challenging. Logitech's team workspace solutions provide an enterprise-grade ecosystem of products, software, and services to enable collaboration for your team, regardless of location.

Our innovative technology improves meeting experiences for the employee while satisfying IT needs around device deployment and maintenance. Logitech team workspace solutions are made for all your people, and all your spaces.

LOGITECH ADVANTAGE

- **EQUITY:** Our solutions unleash a more inclusive and equitable work experience for all.
- **PERFORMANCE:** Different types of work require different tools; we design with the end user in mind.
- **COLLABORATION:** We enable authentic connection and co-creation, fueling healthy hybrid cultures.
- **COMPATIBILITY:** Our pre-configured solutions are certified for the most popular meeting platforms.
- **SECURITY:** Our ecosystem is designed with security and manageability in mind, keeping power in IT's hands.
- **SUSTAINABILITY:** We are committed to doing right by the planet in everything we do.

Everything you need to equip your team workspaces for productive collaboration.

PRODUCTS

Logitech has an extensive product suite to improve productivity in the hybrid workspace.

Conference Cameras and Video Bars >>

Cameras and Room Add-Ons >>

Touch Controllers >>

Compute >>

Accessories >>

SOFTWARE

Logitech software enhances the manageability and updates the experiences of our products, so IT can better deploy team workspaces.

Logitech Sync >>

CollabOS >>

SERVICES

Logitech services provide peace of mind. With comprehensive service plans and extended warranties, our solutions will do the job right, or we will make it right.

Logitech Select >>

Extended Warranty >>



QUALITY TECHNOLOGY: RIGHTSENSE™

RightSight™ automatically frames and focuses the speaker while **RightLight™** optimizes light balance and color. **RightSound™** suppresses background noise and auto-levels voices. Together, RightSense technology suite enables quality video meetings every time.



Logitech's conference cameras and video bars help create a more equitable team workspace with high-quality video and audio that makes it feel like your whole team is in the room, even when half of them work from home. Our trusted video collaboration solutions are compatible with popular platforms like Google Meet™, Microsoft Teams®, and Zoom™.



RALLY BAR

Rally Bar is Logitech's premier, all-in-one video bar for midsize meeting rooms. Brilliant optics, powerful audio, and remarkable simplicity set a new standard for video collaboration. Deploy in USB or appliance mode.

Logi P/N: 960-001308 (Graphite)

Logi P/N: 960-001320 (White)



RALLY BAR MINI

Simplicity meets versatility with Rally Bar Mini, Logitech's most advanced all-in-one video bar for small rooms or huddle spaces. Deploy in USB or appliance mode.

Logi P/N: 960-001336 (Graphite)

Logi P/N: 960-001348 (White)



MEETUP

MeetUp is a plug-and-play conference camera for small meeting rooms, featuring an ultra-wide lens with motorized pan and tilt and up to 5X zoom in a compact, easy-to-install form factor.

Logi P/N: 960-001101

Logi P/N: 960-001201 (w/ expansion mic)



RALLY CAMERA

Rally Camera is a premium standalone USB camera that delivers brilliantly sharp video at resolutions up to 4K, perfect for medium to large meeting spaces. Rally can be used with third-party solutions or as a secondary camera in larger team workspaces and auditoriums.

Logi P/N: 960-001226



RALLY PLUS

Power meets flexibility with Rally Plus, Logitech's video conferencing system for large and extra-large rooms. Rally Plus features an ultra-HD PTZ camera, modular audio, and AI-driven performance. Expandable up to seven mic pods for even greater coverage.

Logi P/N: 960-001225



SIGHT

Tabletop Multi-Participant Camera | Coming 2023

Give remote participants the best meeting room perspective with Logitech Sight, an AI-powered tabletop camera that automatically identifies and frames speakers for a better remote experience.

Logi P/N: 960-001510 (Graphite)

Logi P/N: 960-001503 (White)

SCRIBE

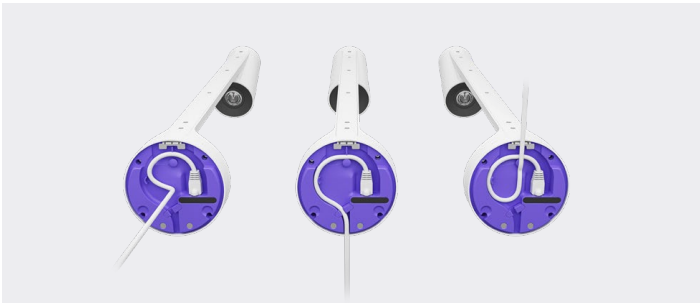
Whiteboard Camera

Effortlessly share whiteboards into video meetings with Logitech Scribe, an AI-powered whiteboard camera. With built-in AI and a custom lens, Scribe broadcasts whiteboard content into video meetings with outstanding clarity. Easily start sharing with the wireless button or the Tap touch controller.

Logi P/N: 960-001332

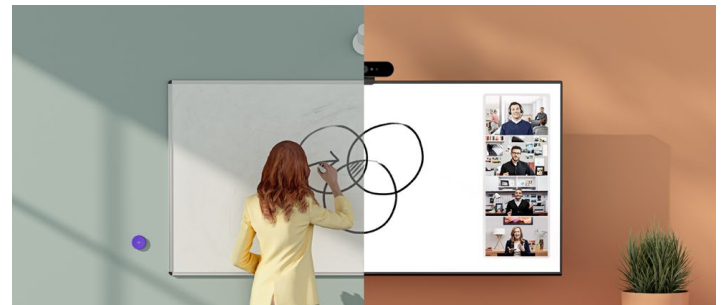


CLEAN, FLEXIBLE INSTALLATION

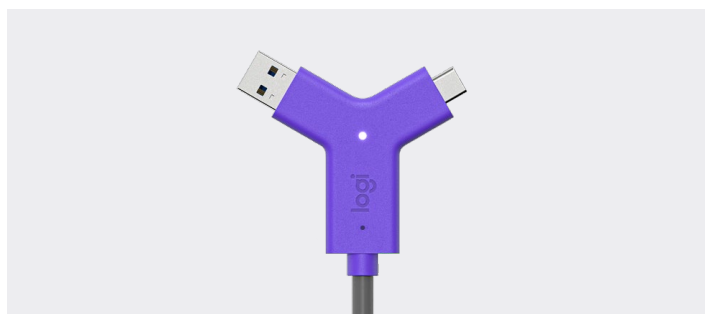


The included installation kit ensure clean, confident installs with cable retention and options to route cabling up, down, or through the wall.

AI POWERED PERFORMANCE



Scribe's built-in AI delivers a transparency effect, allowing participants to see "through" the presenter for an unobstructed view of the whiteboard.



SWYTCH

Plug-and-Display Laptop Link

Logitech Swytch offers a one cable laptop link to a room's conference camera and display, making it easy for teams to meet, present, and stream over any service.

Logi P/N: 952-000009

Deliver one-touch join, calendar integration, easy content-sharing, and a consistent experience across all rooms.



LOGITECH TAP

Meeting room touch controller that delivers one-touch join and easy content-sharing. Tap provides clean and secure cabling and multiple mounting options for a tidy and professional install. Tap is included with room solutions that use USB-connected touch controllers.

Logi P/N 939-001950



LOGITECH TAP IP

This meeting room touch controller connects with a single Power over Ethernet connection for one-touch join and easy content-sharing. Clean, secure cabling and multiple mounting options ensure Tap IP can be conveniently installed to stay up and running for the next video meeting. Included with room solutions that use IP-connected touch controllers.

Logi P/N: 952-000085 (Graphite)

Logi P/N: 952-000088 (White)



TAP SCHEDULER

Purpose-built scheduling panel for meeting spaces. Indicates availability from a distance and displays meeting details up close. Claim the space for ad hoc meetings, or book ahead for scheduled sessions. Clean cable management and included mounts allow Tap Scheduler to be professionally installed for fast deployment.

Logi P/N: 952-000091 (Graphite)

Logi P/N: 952-000094 (White)



ROOMMATE

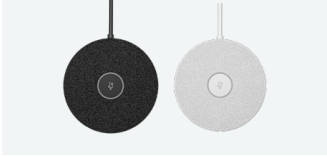
Dedicated Meeting Room Compute

This compute was purpose-built for video collaboration. RoomMate runs CollabOS, which allows you to easily deploy Microsoft Teams Rooms on Android™, Zoom Rooms Appliances, and other leading video conferencing platforms.

Logi P/N: 950-000081

CONFERENCE CAMERA ACCESSORIES

Accessories for Rally Bar, Rally Bar Mini, Rally, and MeetUp that offer modular flexibility, so you can equip any team workspace with the solutions to help make meetings equitable for everyone on your team.



RALLY MIC POD

Modular microphones with RightSound for Rally Bar Mini, Rally Bar, and Rally.

Logi P/N: 989-000430 (Graphite)
Logi P/N: 952-000038 (White)



MIC POD MOUNT

Table mount for Rally Mic Pod.

Logi P/N: 952-000002 (Graphite)
Logi P/N: 952-000020 (White)



MIC POD PENDANT MOUNT

Ceiling mount for Rally Mic Pod.

Logi P/N: 952-000123



RALLY MIC POD HUB

Customize mic placement for any conference table configuration.

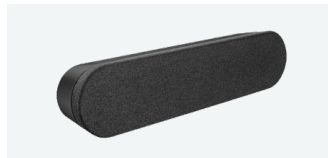
Logi P/N: 939-001647



RALLY MIC POD EXTENSION CABLE

10 m (32.8 ft) extension cable for Rally Mic Pod.

Logi P/N: 952-000047



RALLY SPEAKER

Second speaker connects to Logitech Rally for clear, rich sound.

Logi P/N: 960-001230



RALLY MOUNT KIT

Custom mounts for a sleek installation and secure cabling.

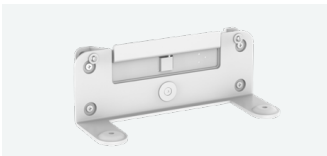
Logi P/N: 939-001644



TV MOUNT FOR VIDEO BARS

Attach any Rally Bar to almost any display with VESA mounting points.

Logi P/N: 952-000041



WALL MOUNT FOR VIDEO BARS

VESA-compatible mounting kit for Rally Bar and Rally Bar Mini.

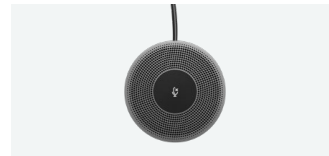
Logi P/N: 952-000044



TV MOUNT FOR MEETUP

Mounting option for MeetUp Conference Camera.

Logi P/N: 939-001498
Logi P/N: 939-001656 (XL)



EXPANSION MIC FOR MEETUP

Add-on microphone with mute control for extended audio range.

Logi P/N: 989-000405



MEETUP MIC EXTENSION CABLE

10 m (32.8 ft) extension cable for Expansion Mic.

Logi P/N: 950-000005

SCRIBE ACCESSORIES

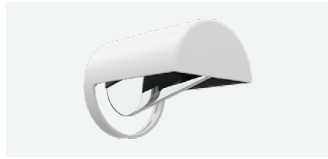
With these accessories, the Scribe whiteboard camera simplifies whiteboard sharing in any space.



SCRIBE GLASS MOUNT

Mount Logitech Scribe on glass surfaces.

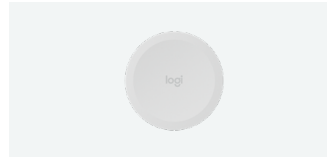
Logi P/N: 952-000120



POLARIZER FOR SCRIBE

Polarizing filter to reduce glare in environments with bright lighting.

Logi P/N: 952-000116



SHARE BUTTON

Scribe button in white. Purple button is included with Scribe.

Logi P/N: 952-000102

TAP ACCESSORIES

Simplify cable management and mount the Tap touch controller in the most convenient location in every team workspace.



WALL MOUNT FOR TAP

Space-saving wall mount with cable management for Logitech Tap and Tap IP meeting room touch controllers.

Logi P/N: 939-001817

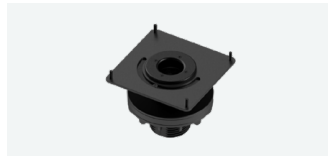
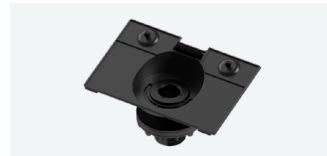


TABLE MOUNT FOR TAP

Swiveling table mount with cable management for Logitech Tap and Tap IP meeting room controllers.

Logi P/N: 939-001811



RISER MOUNT FOR TAP

Elevated table mount with swivel and cable management for Logitech Tap and Tap IP meeting room touch controllers.

Logi P/N: 939-001814



CAT5e KIT FOR TAP

Cabling kit to supply USB data and power to Logitech Tap for cleaner and simpler cable routing.

Logi P/N: 952-000019

COMPUTE ACCESSORIES

Choose the right mount for your team workspace compute.



COMPUTE MOUNT

Mounting bracket with cable retention for Logitech RoomMate and other video conferencing compute devices.

Logi P/N: 952-000097



PC MOUNT

Mount with cable retention for mini PCs and Chromeboxes.

Logi P/N: 939-001825

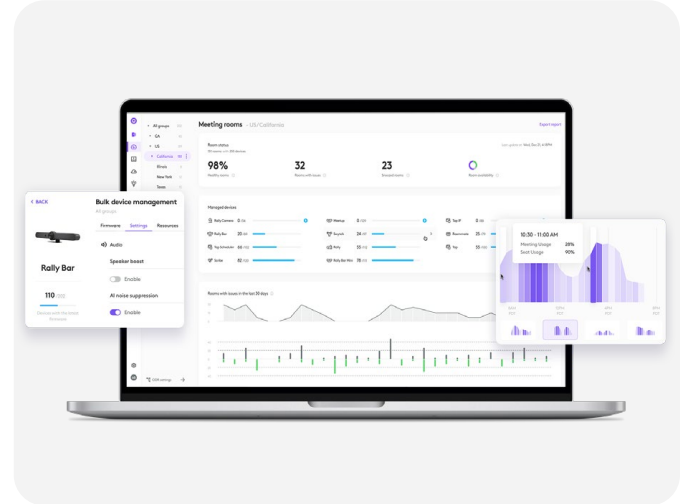
Logitech software is integral to team workspaces. Software enhances Logitech products by ensuring a consistent, unified, and customizable experience across devices and rooms, along with the ability to remotely manage and update devices.

MANAGEABILITY

LOGITECH SYNC

Sync works alongside your service provider administrative tool to help build and maintain video deployment as your hybrid workforce grows and your organization scales.

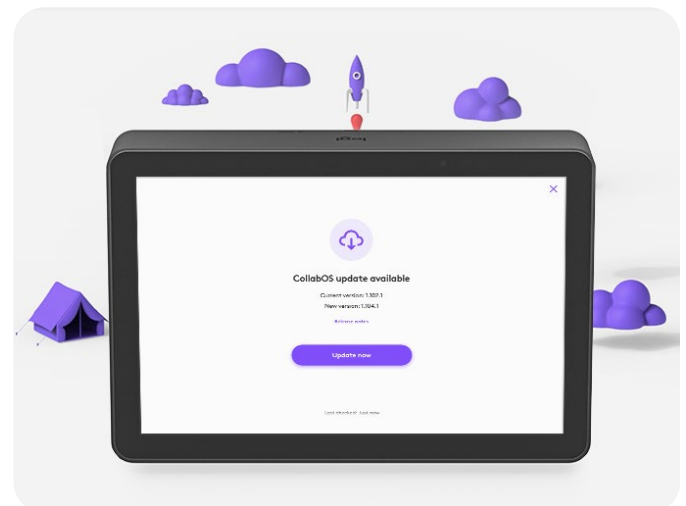
- Configure and update devices
- Diagnose at a distance
- Automate alerts and minimize downtime
- Analytics and insights with Sync Plus



MANAGEABILITY

CollabOS

This operating system integrates with top video conferencing, scheduling, and space management providers to deliver high-quality experiences. With CollabOS, devices work seamlessly together, continuously improve, and are easier than ever to deploy and manage.



Logitech services provide peace of mind. Our solutions will do the job right, or we'll make it right.

LOGITECH SELECT

Logitech Select is a comprehensive service plan offering 24/7 support, a dedicated Customer Success Manager¹, product replacement, accelerated RMA, onsite spares¹, and advanced Logitech Sync analytics through integration with ServiceNow.²

¹ Available with purchase of a service plan for 50+ rooms

² Available for users of Logitech Sync



EXTENDED WARRANTY

With an extended warranty,³ your Logitech purchases are protected against defects for up to five years from the purchase date. Extended warranties are available for either one year or three years beyond the original Logitech manufacturer's limited two-year warranty.

³ Terms and conditions apply. Not available in all countries. Contact your reseller.



ELEVATE YOUR TEAM WORKSPACES

Logitech designs video collaboration solutions that make equitable meeting experiences possible for everyone. We help teams work better together, from anywhere, without compromising on quality, productivity, or the creativity that comes from collaboration.

Contact your Logitech Account Rep for more information.

[Logitech.com/business/team-workspace](https://logitech.com/business/team-workspace)

© 2022 Logitech. All rights reserved. Logitech, the Logitech logo and other Logitech marks are owned by Logitech and may be registered. All other trademarks are the property of their respective owners. Logitech assumes no responsibility for any errors that may appear in this publication. Product, pricing and feature information contained herein is subject to change without notice.

logitech