



TRANSFORM WORKSPACES FOR WELLBEING TO SUSTAIN HYBRID WORKING



IT HURTS

Over half (51%) of homeworkers experience daily discomfort¹.

The American Chiropractic Association has reported a 92% increase in complaints of neck pain, back pain, and other musculoskeletal issues², which correlates to the increase in home working.

Remote work setups were rapidly deployed for function rather than comfort. **Over 7 in 10 people (71%)** said they were 'improvising'³ because they lacked the luxury of a dedicated office – **nearly a third (31%)** are forced to work from their bedroom⁴. According to the International Labour Organization⁵, "Continued working on sub-par equipment and tools leads to a loss of productivity, frustration, and ultimately disengagement of the workers."

Employers have a responsibility to provide their employees with a safe working environment, regardless of whether they're based in an office, from home, or on the move. Ignoring this responsibility could lead to a flood of compensation claims – **the average back pain claim currently ranges from \$40,000 to \$80,000⁶.**

Hybrid has become the dominant work model and today's employees expect the freedom to choose where and how they work. It's time to think beyond the office walls and provide the right tools to empower distributed teams, take care of employee wellbeing, and deliver an improved work experience.

DID YOU KNOW?



15%

15% of computer users experience pain or discomfort in the fingers, hand, and wrist daily⁷.



45%

A laptop touchpad creates an additional 45% muscle activity in the shoulder, neck, and forearm⁸.



41%

41% of Americans report new back, neck, and shoulder pain since they started working remotely⁹.

FROM 'GOOD ENOUGH' TO 'WELL ENOUGH'

To sustain productivity, home office setups must transform across three core areas of employee wellness:

PHYSICAL WELLNESS

Remote employees work **16.8 more days per year** compared to their office-based colleagues¹⁰. While this sounds like a 'win' in terms of greater productivity, the reality is that longer hours make people prone to more physical pain problems. In particular, poor posture is a known key risk factor for repetitive strain injury, which can cost an employer **\$65,000 in direct compensation and indirect productivity costs**¹¹. Ultimately, **more comfort means more focus and greater productivity**, regardless of where people choose to work.



Tips for creating a more ergonomic workspace set up

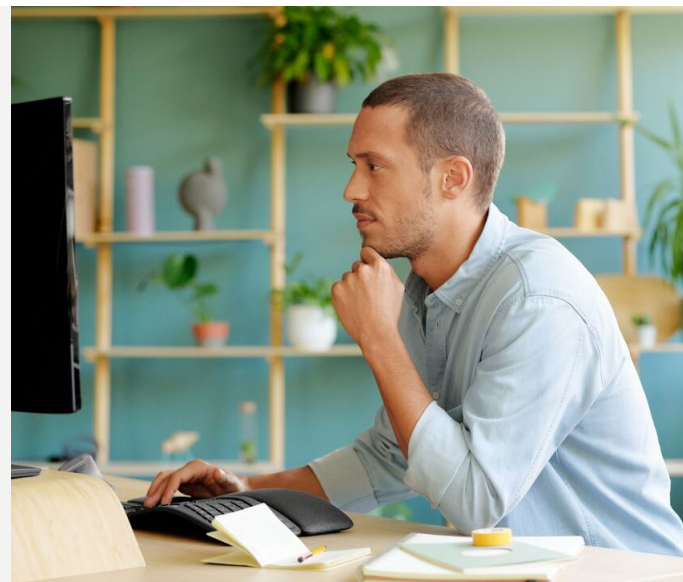
Roll over the purple dots to find out more



MENTAL WELLNESS

With less social contact, homeworkers are suffering with poor mental health. Nearly three-quarters (74%) report it's negatively impacted their performance¹³ - for some it can result in a **loss of 10+ hours of productivity per week**¹⁴.

Video is a key enabler for remote work allowing colleagues to see people's body language and expression. It can promote feelings of trust, belonging and psychological safety, which enhances the employee experience. Forrester calculates that **every \$1 spent on improving the employee experience results in a \$5 return** based on increased employee productivity, organizational agility, and customer satisfaction¹⁵.





WORKPLACE EQUITY

Workspaces are not all created equal. As individuals, we all work in different ways and favor different environments. Therefore, one size will never fit all.

Equip employees with their choice of technology to create the optimal workplace. Companies with happy employees are shown to outperform the competition by **20%**¹⁷. And employers can save **over \$11,000 per year per employee** due to the lower cost of office space, increased productivity, reduced absenteeism, and less staff turnover¹⁸.

[Roll over the purple dot to find out more](#)

WELLBEING IS THE NEW COMPETITIVE EDGE

Ask employees what keeps them turning up to their workplace every day and 60% say wellbeing²⁰.



Every employee uses peripherals, regardless of their role, and yet less than **1 in 10 companies** thinks to personalize this experience²¹

Workspaces are not created equal, and one size does not fit all, so a small investment here would have a big impact on the employee experience.

Logitech delivers a variety of tried and tested solutions so organizations can offer employees the peripherals that best suit their working style to support wellness in the workplace.



A keyboard and mouse form the entry point to the digital world – a heavy computer user will perform **3-million keystrokes** and move their mouse **up to 17-miles (27 km) each year**²²



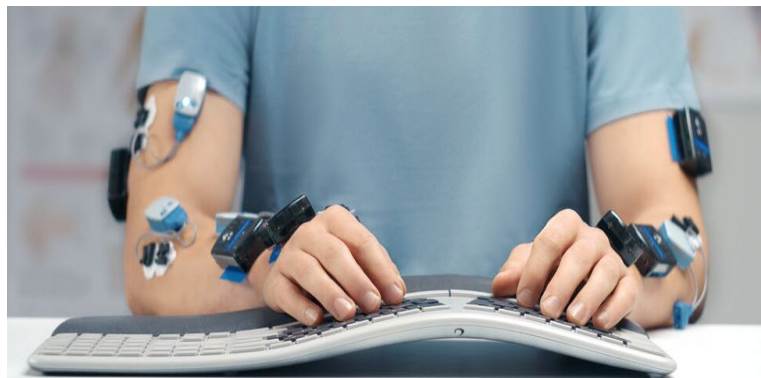
SETTING NEW STANDARDS, ONE SMALL STEP AT A TIME

Logitech has always had a deep ergonomics focus, but in 2018 we established The Logi Ergo Lab - a human-centered and science-driven approach to designing, developing, and reinventing tools that help people feel better at work.

Did you know?

Ergonomic adjustments can **reduce staff turnover by 48%**, simply because employees are happier in their work environments¹⁹?

[Roll over the purple dots to find out more](#)



WORKSPACE WELLNESS IN THE TOUCH OF A BUTTON

Transform workspaces to improve the employee experience with high-performance, enterprise-grade, personal workspace solutions designed to increase comfort, productivity, and ease of use.

KEYBOARD AND MICE

[Roll over the purple dots to find out more](#)



WEBCAMS AND HEADSETS

[Roll over the purple dots to find out more](#)



ELEVATE EMPLOYEE OUTCOMES WITH LOGITECH SOLUTIONS

Discover two different desktop setups that can increase comfort, performance, and productivity – and help your people transform the way they work.

Roll over the purple dots to find out more

ERGO K860 FOR BUSINESS



920-010175

LIFT FOR BUSINESS



910-006491
Graphite

910-006492
Graphite/Left

910-006493
Off-White

LOGITECH BRIO ULTRA HD PRO BUSINESS WEBCAM



960-001106

LOGITECH ZONE WIRELESS (PLUS)



Zone Wireless (UC): 981-000913
Zone Wireless Plus (UC): 981-000918
Zone Wireless (MSFT Teams): 981-000853
Zone Wireless Plus (MSFT Teams): 981-000858

Roll over the purple dots to find out more

BRIO 505



960-001411

MX KEYS MINI FOR BUSINESS



920-010594
Graphite

920-010595
Pale Gray

MX ANYWHERE 3 FOR BUSINESS



910-006204
Graphite

910-006215
Pale Gray

LOGITECH ZONE TRUE WIRELESS



985-001081 Graphite

TRANSFORM WORKSPACES FOR WELLBEING

Deliver better employee wellbeing, performance, and productivity outcomes in hybrid workspaces with enterprise-grade tools from Logitech. To find out more about how Logitech for Business can support physical wellness, mental wellness and workplace equity.

VISIT [LOGITECH.COM/BUSINESS/WORK-SETUPS/PRODUCTS](https://www.logitech.com/business/work-setups/products)

Sources

1. "Study Reveals The State Of Home Offices In 2021", CraftJack 2. "Episode 035: Injury Stats of WFH", The Business of Ergonomics Podcast 3. "Study Reveals The State Of Home Offices In 2021", CraftJack 4. "Study Reveals The State Of Home Offices In 2021", CraftJack 5. "Teleworking During the COVID-19 Pandemic and Beyond," International Labour Organization (ILO), 2020. 6. "The Business Case for Implementing an Ergonomics Program," The Ergonomics Center, NC State University, 2021. 7. Logitech proprietary research, 500 people, US, 2019 8. Logi Ergo Lab research, Logitech, Logitech standard mice compared to standard embedded trackpad, 2019. 9. Episode 035: Injury Stats of WFH, The Business of Ergonomics Podcast 10. "The Benefits of Working From Home," Airtasker, 2020. 11. Estimated Costs of Occupational Injuries and Illnesses and Estimated Impact on a Company's Profitability Worksheet, Occupational Safety and Health Administration, United States Department of Labor. 12. "The Business Case for Implementing an Ergonomics Program," The Ergonomics Center, NC State University, 2021. 13. "Global Employee Health Study," Aetna International, 2020. 14. 2020 Behavioral Health Impact Update, The Standard, 2020. 15. "Invest in Employee Experience (EX), Drive Your Bottom Line Growth," Forrester, 2020. 16. "Belonging: From comfort to connection to contribution," Global Human Capital Trends Survey, Deloitte, 2020. 17. "11 Shocking Employee Happiness Statistics For 2022 That Will Blow Your Mind", SnackNation 18. "Telework in the 21st Century", Global Workplace Analytics 19. "The Business Case for Implementing an Ergonomics Program," The Ergonomics Center, NC State University, 2021. 20. "The rise of the social enterprise", Deloitte 21. "Less than 10% of companies offer a personalised employee experience", Information Age 22. The Logi Ergo Lab 23. Logitech Ergo Lab research, Logitech, of a vertical mouse as compared with a traditional non-vertical mouse