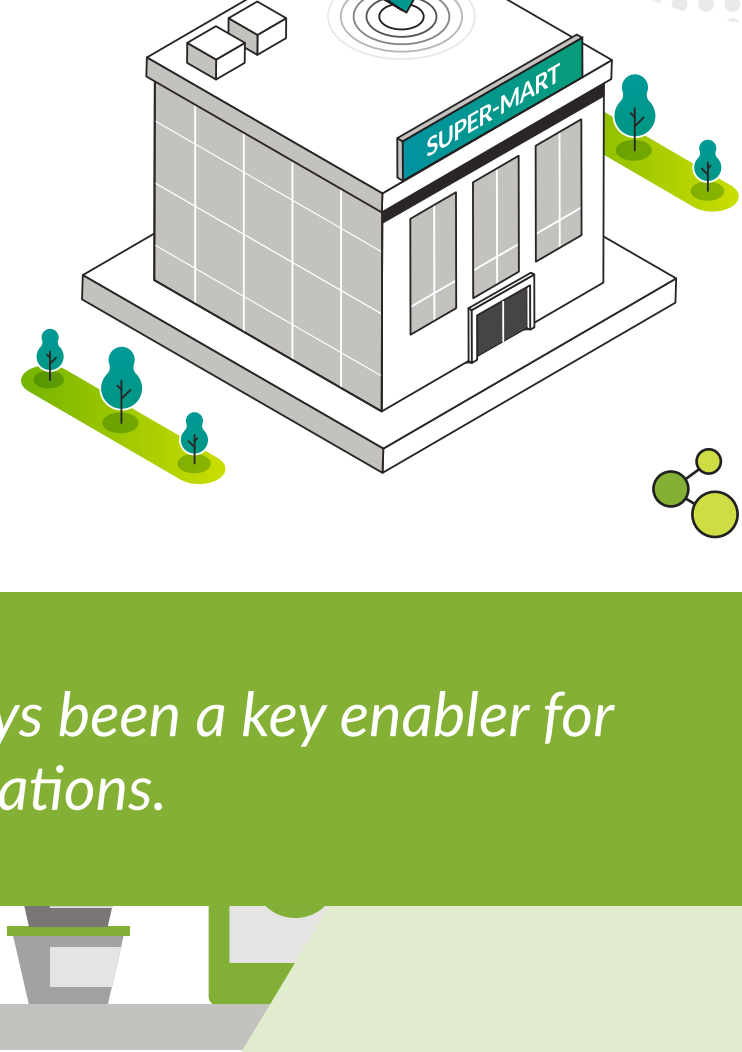
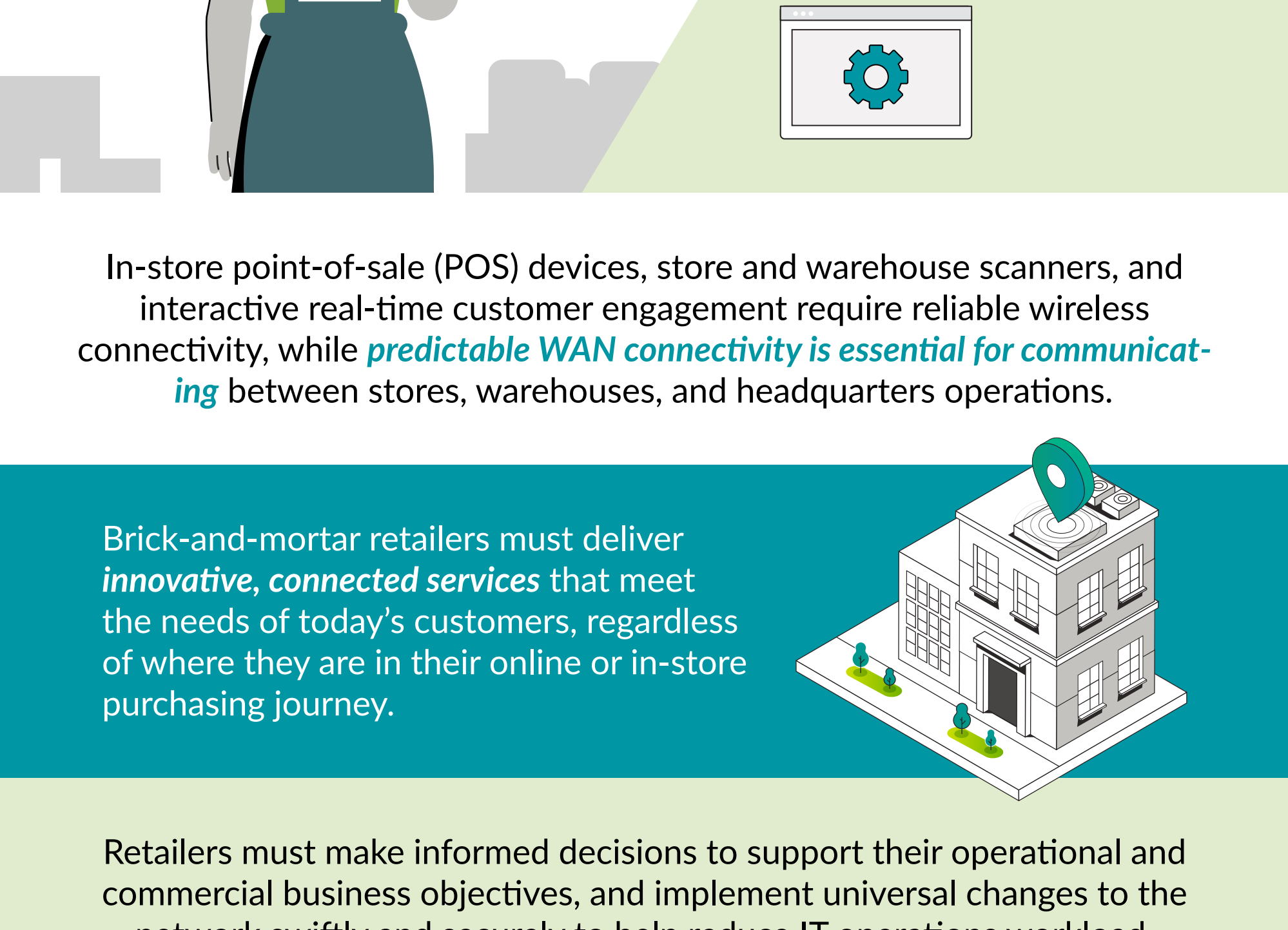


# Maximize Network Performance and Enable Efficient Retail Operations

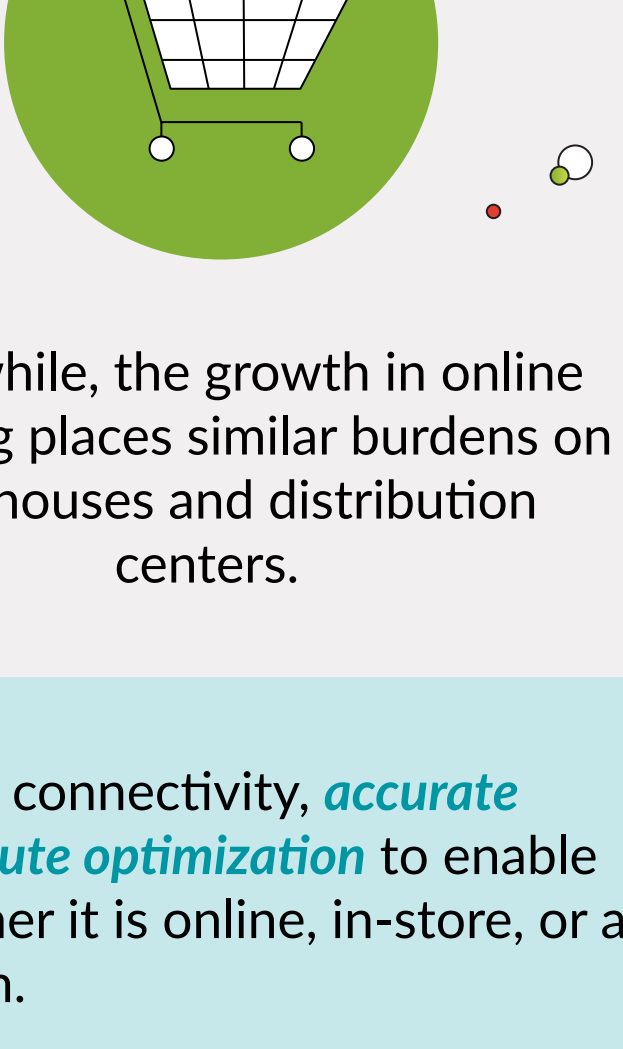


The network infrastructure has always been a key enabler for efficient retail operations.



In-store point-of-sale (POS) devices, store and warehouse scanners, and interactive real-time customer engagement require reliable wireless connectivity, while **predictable WAN connectivity is essential for communicating** between stores, warehouses, and headquarters operations.

Brick-and-mortar retailers must deliver **innovative, connected services** that meet the needs of today's customers, regardless of where they are in their online or in-store purchasing journey.



Retailers must make informed decisions to support their operational and commercial business objectives, and implement universal changes to the network swiftly and securely to help reduce IT operations workload.



New ways to engage with customers will place additional burdens on the already taxed IT infrastructure.

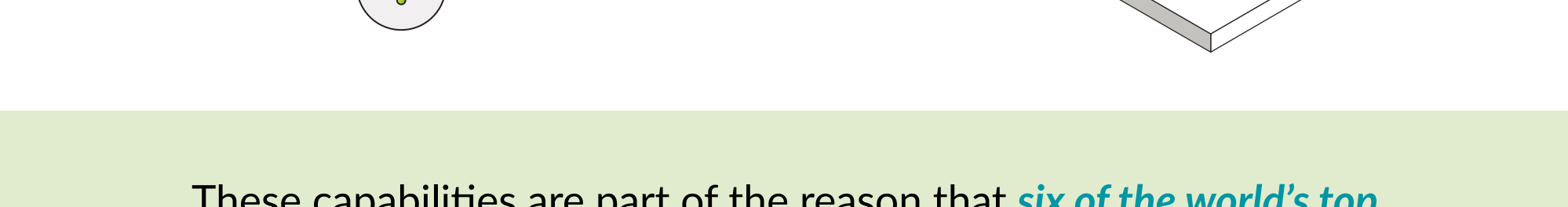


Meanwhile, the growth in online shopping places similar burdens on warehouses and distribution centers.

Retailers are demanding reliable network connectivity, **accurate indoor location services, asset tracking, and route optimization** to enable the best possible customer experience, whether it is online, in-store, or a combination of both.

## How Juniper Can Help

Retail organizations know that **personalizing consumers' shopping experience translates into better engagement and higher revenue.**



From a secure WAN backbone,

to AI-driven wired and wireless access, Juniper helps **retailers deliver improved customer and sales associate experiences, while streamlining IT operations.**

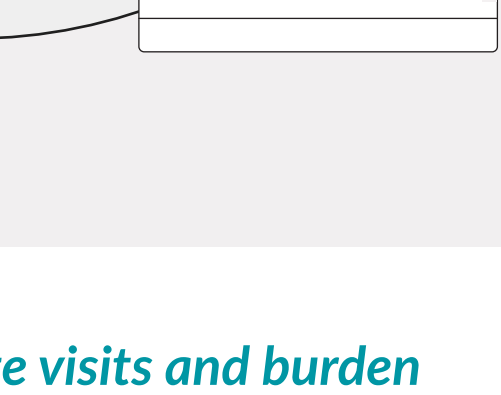


These capabilities are part of the reason that **six of the world's top Fortune 10 retailers** run their networks on Juniper solutions.

## Boost Reliability and Speed for Front-of-Store Sales and Back-of-Store Operations

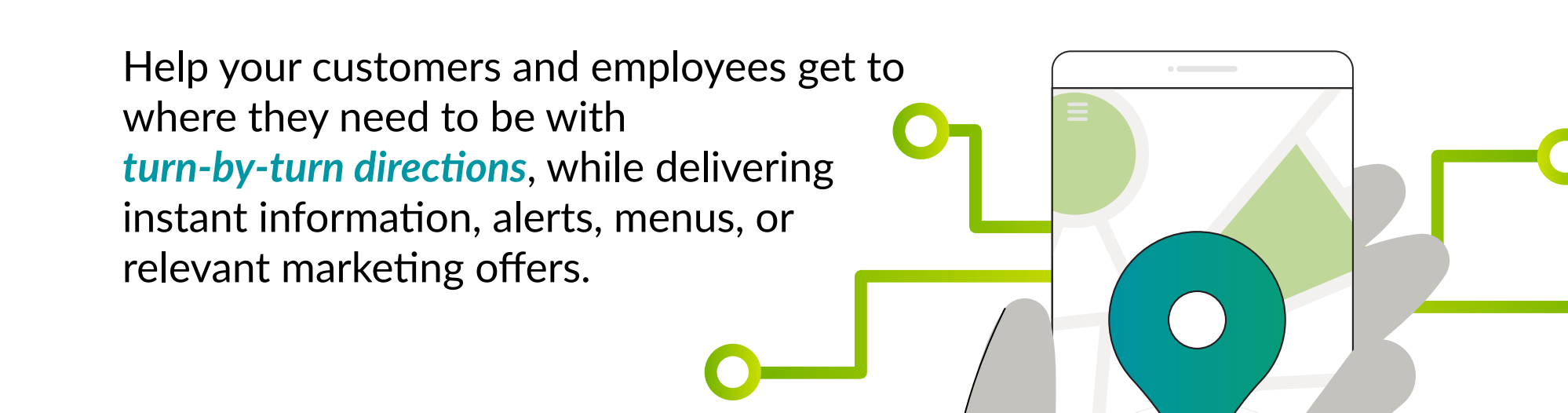


Juniper AI-driven wired and wireless solutions **boost uptime and performance** for your POS transactions and back-of-store operations and inventory logistics.



With Mist AI you can set, monitor, and enforce

Service-level Expectations (SLEs) for key Wi-Fi and switching performance metrics like **throughput, capacity, connection, and uptime.**



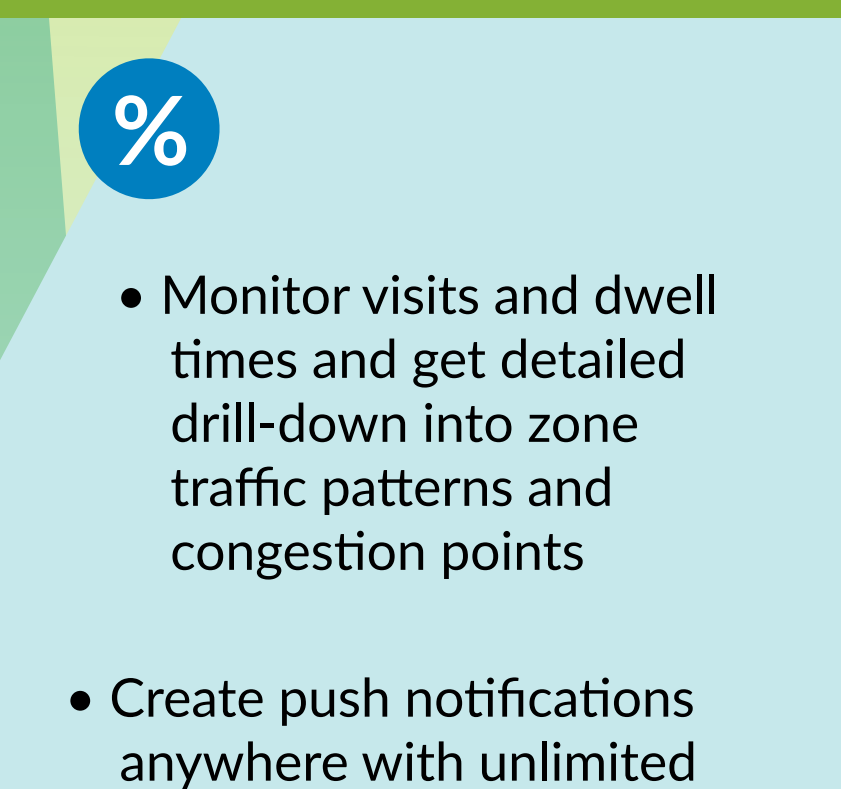
The AI-driven solution proactively identifies issues, determines the root cause, and helps IT teams quickly remediate any issues.

Marvis™ Virtual Network Assistant **reduces onsite visits and burden on IT staff.**

These capabilities help you **minimize your IT support costs, accelerate POS transactions, and keep inventory flowing.**

## Superior In-Store Shopping Experience with Real-Time Wayfinding and Guest Wi-Fi

Help your customers and employees get to where they need to be with **turn-by-turn directions**, while delivering instant information, alerts, menus, or relevant marketing offers.



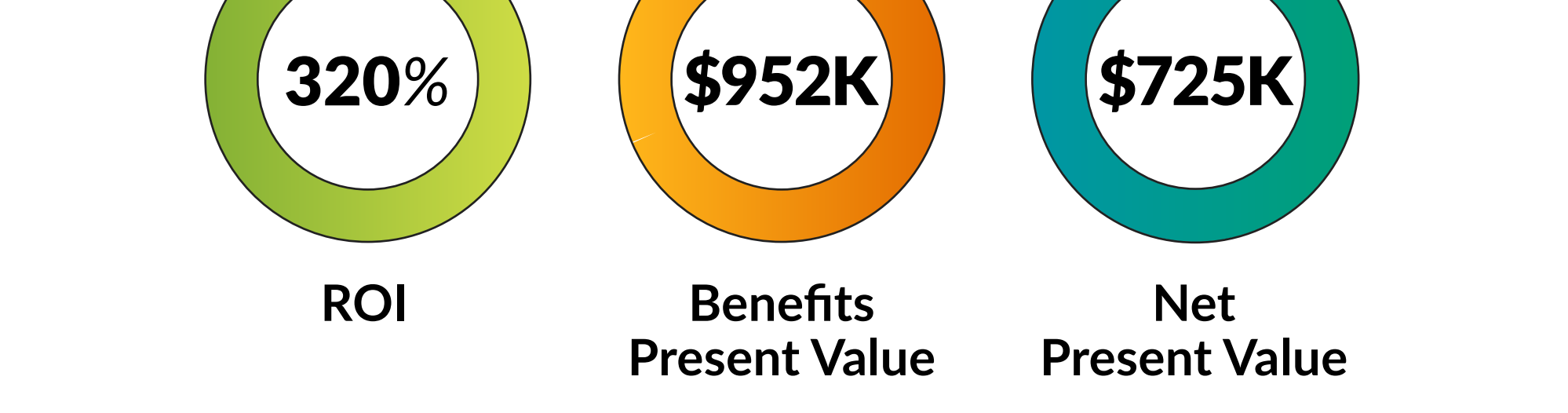
Provide within **1-to-3 meter accuracy** and sub-second latency to maximize customer experience and staff efficiencies.



Provide automated services including **self-checkout, curbside pickup, and stock checking.**

## Personalize Shopper Experiences with Real-time Notifications and Alerts

Greet store visitors as they arrive onsite, to start their **best-in-class experience with your brand.**



- Monitor visits and dwell times and get detailed drill-down into zone traffic patterns and congestion points
- Create push notifications anywhere with unlimited virtual beacon support

Deliver contextually relevant messages and marketing offers anywhere in the store for a **personalized mobile experience.**

## Speed Time to Market for New Digital Initiatives

Competitive success in fast moving retail markets demands the **agility of a highly automated data center** that closely ties development to delivery and **assures the highest-quality experiences.**



Reimagine your data center and cloud operations with turnkey software to **automate the entire network lifecycle in a single, closed-loop system.**

Reimagine your data center and cloud operations with turnkey software to automate the entire network lifecycle in a single system



**Payback < 6 months**

Forrester: The Total Economic Impact™ of Juniper Apstra, May 2022

## Securely Connect and Safeguard Retail Operations

**Extend security to protect commercial and customer data at all points of the network**, from corporate headquarters, to warehouses to retail stores, with secure SD-WAN.



Leverage existing network patterns as security devices to keep threats out.

Juniper® Connected Security goes beyond traditional security,

taking advantage of SD-WAN edge devices to identify and reject untrusted traffic and applying security control into the switching environment to quarantine at-risk devices and thwart and potential threats.



## Gap Inc. Transforms In-Store Wi-Fi Experience with AI-Driven Networking

Technology has transformed retail, changing how shoppers interact with their favorite brands.

- To give customers and retail associates the best experience with in-store Wi-Fi, Gap Inc. found AI-driven networking to be a perfect fit.



Read the story