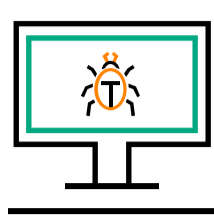


## WHAT'S THREATENING IT SECURITY AND WHAT ARE PEOPLE DOING ABOUT IT?

The Ponemon Institute surveyed 4,150+ IT security leaders and practitioners and here's a glimpse at what they found.



**60%** struggle to protect complex and dynamically changing attack surfaces



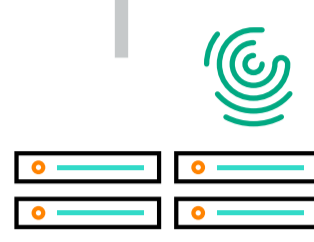
**72%** are not getting full value from their security investments



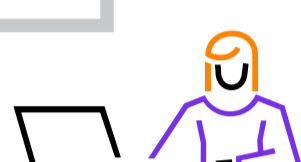
**Complexity causes risks to security**

**58%** say lack of integration and complexity of security solutions creates gaps in defenses

**HPE designs security into everything we do**, to help you securely transform business, data, apps and experiences, to close IT security gaps.

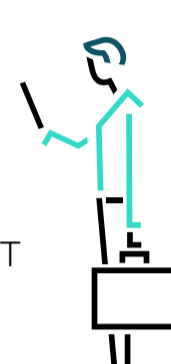


**68%** lack visibility and control of users



**IT security gaps cause delays in detecting attacks on the inside**

**72%** think legacy IoT is challenging to secure



Less than **29%** are highly effective in closing the gaps



**HPE embeds zero trust security** into our infrastructure, software and networking solutions, helping you secure your critical assets, data and apps where they are—without adding complexity.



**The greatest threats are attacks on the inside**

**61%** believe attacks inside the network will do the greatest damage

**65%** lack confidence they can detect an inside attack before breakout occurs

**35%** believe sophisticated inside attacks have evaded traditional security defenses



**Detect ransomware and gain a 360-degree view of security** from manufacturing and supply chain through end-of-life decommissioning with HPE Gen10 servers' advanced security features, now available as-a-Service.

**Effective security reduces risks during digital transformation**

HPE Pointnext Services helps to improve the overall security posture of your digital transformation programs by **remediating the security risks** that your business assets are exposed to.

**77%** of Security experts are involved in digital transformation projects

**59%** believe security technologies are important to successful digital transformation

**59%** are significantly challenged to limit users from accessing unauthorized data and apps



**71%** believe AI reduces time and effort to detect attacks

**AI is helping to solve security challenges**

**61%** think AI will find attacks before they do damage

**61%** believe AI will reduce false alarms that must require investigation

Aruba ClearPass provides **AI-powered visibility** and **industry leading policy enforcement** to manage and control access for mobile and IoT—on any vendor's wired and wireless networks.

Read the Ponemon Institute report for the full story: [www.hpe.com/us/en/resources/servers/ponemon-it-security-report.html](http://www.hpe.com/us/en/resources/servers/ponemon-it-security-report.html)

Learn more at [www.hpe.com/security](http://www.hpe.com/security)