



HPE Aruba Networking

SUSTAINABILITY IN A CIRCULAR ECONOMY



A modern network supports your green initiatives



Aruba is committed to helping organizations improve their sustainability posture



Aruba is focused on lowering its own Scope 3 emissions by **42%** by 2030 and becoming net zero by 2040



Aruba's modern network approach has a positive impact on sustainability in three key areas
How it's made/lives | How it works | How it's used

Sustainability attributes in key areas

- ✓ Power efficient power supplies **reduce energy consumption**
- ✓ Ecofriendly parts (**recyclable**)
- ✓ **NaaS** lifecycle management, less onsite gear (**less power/HVACs**)

How it's made

- ✓ Centralized platform **eliminates multiple management consoles**
- ✓ Network optimization leads to **lower power consumption**
- ✓ **Support** of legacy APs and switches **extends lifecycle** and reduces waste
- ✓ Ability to configure **APs to power down during low use hours**

How it works

- ✓ Hybrid work (connectivity) solutions allow employees to **work remotely**, **reducing** consumption of **fossil fuels** normally used in commuting to the office, and decreases the amount of corporate **real estate** needed
- ✓ **IoT** plays a role in **facilities and energy management** including the use of occupancy presence sensors, lighting control, water-leak detection, air-quality monitoring, and predictive maintenance of refrigeration, air conditioners, other industrial equipment
- ✓ Leveraging of **network data to analyze building loads** (areas of building, total building)

How it's used

IT asset lifecycle solutions from HPE Financial Services help you extract additional value from your existing IT investments or move to new technology more effectively.

Today's consumers and investors increasingly make choices that look beyond the bottom-line price and profitability metrics. Sustainability programs affect consumer behavior, as shown in a [recent study](#) of 2,000 consumers, where 70% said they would go out of their way to support a company that makes substantial efforts to be sustainable. This is driving many companies to adopt internal performance policies to effect change throughout their organization.

This solution brief provides details on how HPE Financial Service (HPEFS):

- Meets environmental, social, and governance (ESG) requirements and helps our customers meet their sustainability goals
- Securely recycles equipment to meet strict governance guidelines
- Converts underutilized or outdated equipment to buying credits

SUSTAINABILITY AS A STANDARD BUSINESS PRACTICE

HPE Aruba has adopted an environmental strategy that helps guide business decisions to ensure we maintain resilient operations while minimizing our impact on the planet. Our commitment to ESG performance is also integrated into our business strategy. It drives us to enable our customers to reduce the environmental impacts of their IT infrastructure without jeopardizing performance.

We approach efficient IT using the following framework:

- Energy efficiency—delivering an optimum level of power, storage, and connectivity with the lowest input of energy possible, spearheaded by our Design for the Environment (DfE) program
- Equipment efficiency—maximizing IT processing power and storage capabilities with fewer IT assets
- Resource efficiency—engineering products to work efficiently within data centers and at the Edge while requiring the least amount of support equipment and staff for power conversion, cooling, and resiliency



Figure 1. The Circular Economy¹

Underscoring this framework is our willingness to work with customers to become co-innovation partners on projects to improve measurability of commitment to Sustainability Development Goals (SDGs). With our co-innovation partners, we embrace the Circular Economy (see Figure 1), decreasing the complexity in the supply chain, while increasing the number of IT assets that re-enter the economy after refurbishment. This minimizes environmental impacts across the product lifecycle and reduces total cost of ownership for our customers.

HPE ASSET UPCYCLING SERVICES

Customers choosing Aruba have the option to safely retire IT equipment in a flexible and secure manner through HPE's Asset Upcycling Services (AUS). This program applies to both HPE/Aruba and third-party products.

Aruba offers the HPE Product Return and Recycling program, which includes:

- Recycling
- Certificate of Recycling
- Drop-off locations at HPE-authorized recycling facilities or collection at customer facility for consignments of IT hardware weighing at least one ton
- Transportation to an HPE-authorized sorting and waste facility

REDUCE COMPLEXITY OF RETIRING ASSETS

Once an organization decides that certain IT assets have reached the end-of-life, they face several decisions based on their ESG goals and requirements. We offer assistance and options to retire assets. With HPEFS, we address the challenges of increasing security concerns, business processes, and an extensive list of regulations that govern IT removal and retirement. HPEFS simplifies this process for our customers on a global scale.

When you select Aruba, you also get a partner that has expertise gained from years of processing millions of assets per year. Plus, working with a single, centralized asset remarketing partner means it's easier for your staff to continue achieving their day-to-day work.

TRANSITION IDLE EQUIPMENT WITH SPEED

Idle equipment, whether because it is outdated or not needed in service, reduces return on investment. HPEFS takes on the burden and complexity of legacy IT and allows our customers to transition idle equipment out of the environment with efficiency and speed.

TRUST OUR RISK MITIGATION

Proper management is key at end of use. Otherwise, an organization could be left vulnerable to a wide array of security issues, unrecovered investment dollars, and diminished brand value. HPEFS helps customers make decisions quickly to ensure that the value of the assets is maximized in a secure and environmentally friendly manner. The HPE AUS, see Figure 2, includes:

- Product Pack and Ship Services (from customer's site to an HPEFS Processing Center)
- Asset receipt, audit, and registration
- Product physical, mechanical inspection
- Diagnostic and functionality testing
- Data removal at the Processing Center (when applicable)
- Identifying marks and labels removed
- Product cleaning and remarketing prep
- Recycling services for non-re-marketable product
- Detailed reports (receipt, inventory, settlement)
- Certification (drive wipe, recycling)
- Alternative offer to destruction requirement in RFP

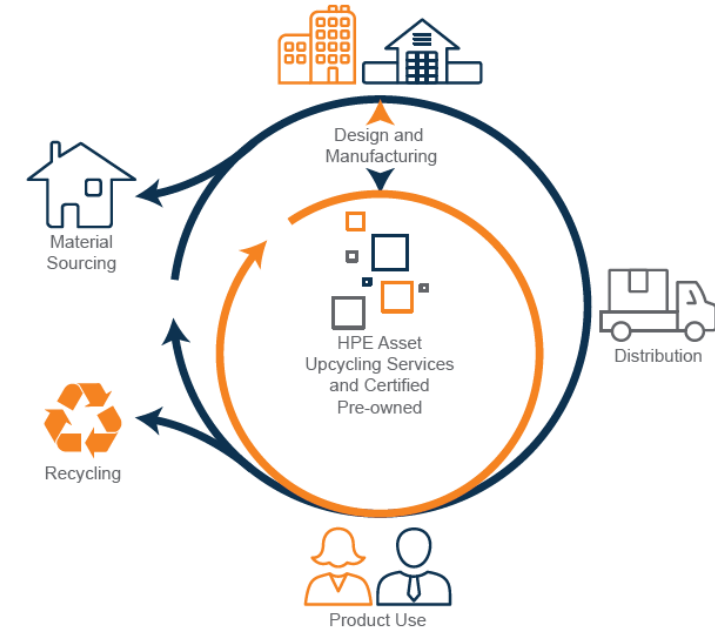


Figure 2. HPE AUS Program

With any HPE Aruba solution, we aim for re-use instead of recycling or destruction, increasing the sustainability performance of our customers, as well as establishing a new revenue stream through HPE's **unique revenue sharing construct for recycled / repurposed / refurbished equipment**, which can be used for re-investing into HPE products and services.

WE SAFELY REPURPOSE OR DESTROY ASSETS

HPE puts special emphasis on extending the lifespan of technology in the circle—a reuse before recycle strategy. In fact, almost 90% of all technology processed in our Technology Renewal Centers gets a second life, while the remainder is recycled or destroyed responsibly. We provide secure data cleansing, either through industry-standard methods of data eradication, the actual physical shredding of recording media, or high-power magnetic degaussing (in the case of hard disks). Complying with governance polices, we provide serialized, asset-level tracking and testing to certify the cleansing of data.

HPE'S COMMITMENT TO SUSTAINABILITY WITH AS-A-SERVICE OFFERINGS

By 2022, HPE will offer its entire portfolio as a service with a range of subscription, pay-per-use, and consumption-driven technology offerings. Providing infrastructure as-a-Service has the potential to reduce the environmental impact of IT by not only cutting the amount of IT equipment needed, but also the resources required to power and cool equipment. This potential is further magnified when offering efficient IT solutions, such as composable infrastructure, through a consumption-based model.

Prior to making the decision to offer its portfolio as a service, HPE joined the United Nations Global Compact (UNGC) when it was first developed (in 2002) and HPE joined when the new company was formed. UNGC membership requires CEO support for the 10 principals. The highlights of the history and support level from HPE's participation with this organization, including our latest communication on our progress (March, 2020), can be found at: [www.unglobalcompact.org/what-is-gc/participants/76831- Hewlett-Packard- Enterprise](http://www.unglobalcompact.org/what-is-gc/participants/76831-Hewlett-Packard-Enterprise). Moreover, Brian Tippens, HPE CSO, has just been appointed to the Board of the UNGC, and HPE aligns its reporting and programs in pursuit of the SDGs

CONCLUSION

IT sustainability programs are expanding, with HPE leading the way as it aligns with the Circular Economy by enabling end-of-use management, the elimination of overprovisioning through as-a-Service offerings, and the optimization of IT structure for energy efficiency and waste reduction.

Our experts work with you, helping to manage the complex process of retiring your technology. Our goal is to minimize the effort required by you to refresh your network and allow you to focus on what matters—innovation and driving your business forward.

Aruba services include helping you manage your technology on a continuous basis, across multiple locations around the world. As you refresh your equipment, we can help manage the end-of-use upcycling throughout the process. We can also do a one-time takeout of unused assets, typically for smaller, less complex IT organizations.

When you put your unneeded assets through our asset upcycling services, our lifecycle experts will refurbish and remarket the equipment for a second useful life. In fact, 99.4% of the technology product and materials returned to our Technology Renewal Centers are reused in some way. With revenue sharing capabilities, this Circular Economy approach benefits both the environment and your bottom-line and can enable you to extract value from unneeded IT to supplement your budget for innovative projects.

As more and more organizations define an ESG framework that drives business decisions, they can look to Aruba and trust that their IT equipment will be efficiently recycled, repurposed, or refurbished under the widely-adopted HPE AUS program, as shown in Figure 2.

Learn more about what HPEFS has to offer Aruba customers at: www.arubanetworks.com/services/hpefs

Thank You

Visit us at www.shi.com/aruba to learn more