

Plan hybrid work and return to office strategy

Resources for IT teams to plan return to office and support hybrid work with remote and in office workers.

The sudden migration to remote work last year has sparked radical shifts in how we live and work. With vaccines and additional safety precautions underway, organizations are slowly beginning to transition selected workforces back into offices this year. The hybrid and return to office models are top of mind for most organizations, with some employees onsite, some working from home, or a combination of the two.

ChromeOS is a modern, secure solution built to enable productivity wherever work happens and allow IT to manage distributed devices remotely. The resources below will help you get started with planning your return to office strategy and supporting a hybrid workforce.



Get started

Learn how ChromeOS can help

With the right endpoints in place, organizations can enable their employees to be effective and productive from office, home or on the go. ChromeOS provides a complete cloud-based platform to help:

- Deploy devices 76% faster than Windows 10 devices¹ and without having to image them
- Centrally manage devices with a cloud-based Google Admin console and Chrome Enterprise Upgrade
- Protect employees with built-in and proactive security measures
- Provide employees access to cloud-based or legacy apps through a Virtual Desktop Infrastructure (VDI) solutions
- Set up shared workspaces and devices with Chromeboxes and docking stations



Useful tips

To learn more about the benefits, use cases, and features of ChromeOS that can help your hybrid workforce. Watch this [session](#) or visit [Enable remote workers](#) for more details.

To learn about ChromeOS security features and supporting Google products, watch our webinar on [Securing remote workers with Google & ChromeOS](#).

Explore a variety of ChromeOS devices, including laptops and convertibles by visiting [Explore ChromeOS devices](#).

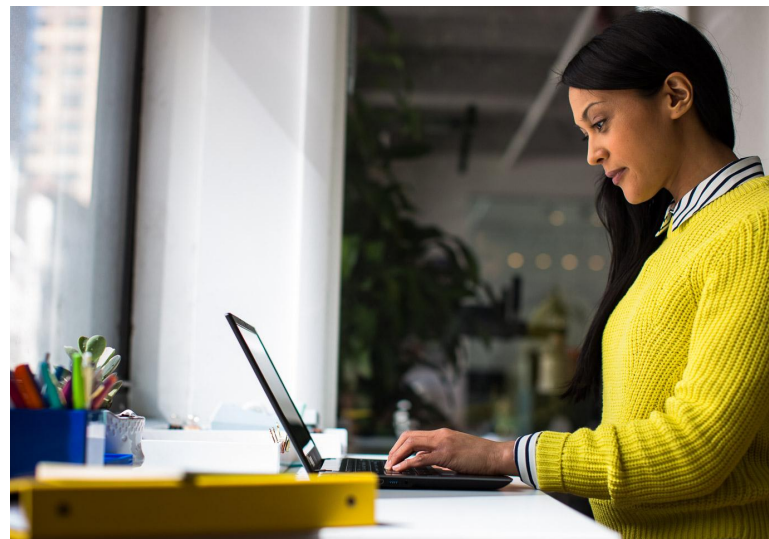


Contact your SHI Account Rep or email
Google@SHI.com for more information.

Plan your return to office strategy (RTO) with ChromeOS

Set up shared devices and workstations for employees returning to office:

- Assess if employees returning back to office in your organization are ready to switch to ChromeOS devices with [ChromeOS Readiness Tool](#)
- Learn end-to-end ChromeOS device deployment including how to sign up, enroll, and manage devices using the Google Admin console. For details, check out this quick start [deployment guide](#) or watch this [session](#)
- Set up policies to enable a hybrid remote workforce on ChromeOS. For details, see [10 best practices](#)
- Provide shared or loaner devices for frontline or in office workers with [ChromeOS device Grab & Go program](#)
- Set up shared workstations for a group of employees working in an office or provide a complete desktop experience for remote employees with [Chromeboxes](#)
- Watch [how-to demo videos](#) from ChromeOS for more details
- Drop ship ChromeOS devices directly to your employees that automatically enroll into enterprise administration with [zero-touch enrollment](#)
- Help your employees make a smooth transition to ChromeOS on their first day. Share with them, [10 steps to set up your ChromeOS device](#)
- To help your employees get the most from their ChromeOS devices, share this [tips and tricks guide](#)
- Provide quick access to legacy, proprietary and full-featured Windows applications locally on a ChromeOS device. To learn more, visit [Parallel Desktop for ChromeOS](#)
- Automatically install and pin Google Play Store apps for employees. To learn more, visit [Google Play apps on ChromeOS](#)
- Explore [RingCentral's Contact Center](#) options and learn how your contact center employees can provide an excellent customer experience
- If employees need access to Windows apps, explore the VDI solutions below which have information on how to deploy them:
 - [Citrix](#)
 - [VMware](#)
 - [Cameyo](#)
- Help employees to stay connected and collaborative with [video conferencing solutions on ChromeOS](#)
- Repurpose Windows & Mac devices to have a ChromeOS experience with [CloudReady](#).



ChromeOS devices for your remote workforce



Deploy & manage ChromeOS devices

Manage ChromeOS devices in your organization by following recommended steps and best practices. The resources below will help to make sure your employees' devices are enrolled and adhere to the policies that you set. Once these steps are completed, your employees are ready to go, and you can manage the devices remotely with the cloud-based Google Admin console.

- Watch [how-to demo videos](#) from ChromeOS for more details
- Drop ship ChromeOS devices directly to your employees that automatically enroll into enterprise administration with [zero-touch enrollment](#).



Onboard new employees

A strong onboarding process is important to make new employees feel comfortable and productive. We're here to help and support you in every step of the way as your organization deploys ChromeOS devices to employees.

- Help your employees make a smooth transition to ChromeOS on their first day. Share with them, [10 steps to set up your ChromeOS device](#)
- To help your employees get the most from their ChromeOS devices, share this [tips and tricks guide](#)
- Use Chrome Remote Desktop to help your employees with technical problems. See [Setting up Virtual IT Support and Services Desk](#)

ChromeOS devices for your remote workforce



Deploy and access apps

Administrators can manage and provide access to apps on an employee's device. ChromeOS devices can access apps through Chrome browser, Google Play Store, and VDI solutions.

- Provide quick access to legacy, proprietary and full-featured Windows applications locally on a ChromeOS device. To learn more, visit [Parallel Desktop for ChromeOS](#)
- Automatically install and pin Google Play Store apps for employees. To learn more, visit [Google Play apps on ChromeOS](#)
- Explore [RingCentral's Contact Center](#) options and learn how your business can provide an excellent customer experience
- If employees need access to Windows apps, explore the VDI solutions below which have information on how to deploy them:
 - [Citrix](#)
 - [VMware](#)
 - [Cameyo](#)



Keep employees productive

Explore more solutions that can help you keep your employees productive from wherever they are located.

- [Manage Chrome browser](#) from the Google Admin console, across all your Microsoft® Windows®, Apple® Mac®, and Linux® devices
- Help employees to stay connected and collaborative with [video conferencing solutions on ChromeOS](#)
- For information on working remotely with Google Workspace, including video meetings, group chat, and document collaboration apps. Watch [Cloud OnAir on demand content](#) or checkout [Working Remotely with Google Workspace](#) to learn more
- Convert Windows & Mac devices into a managed Chromium environment with [Neverware](#).
- Learn how BeyondCorp Remote Access allows employees, contractors, and other users to work more securely from virtually any location without the need for a traditional VPN. For details, see [website](#).