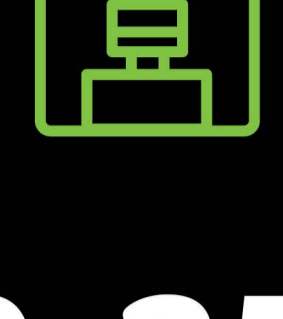


# WHAT DOES THE FUTURE OF WORK LOOK LIKE?

TravelMate P2



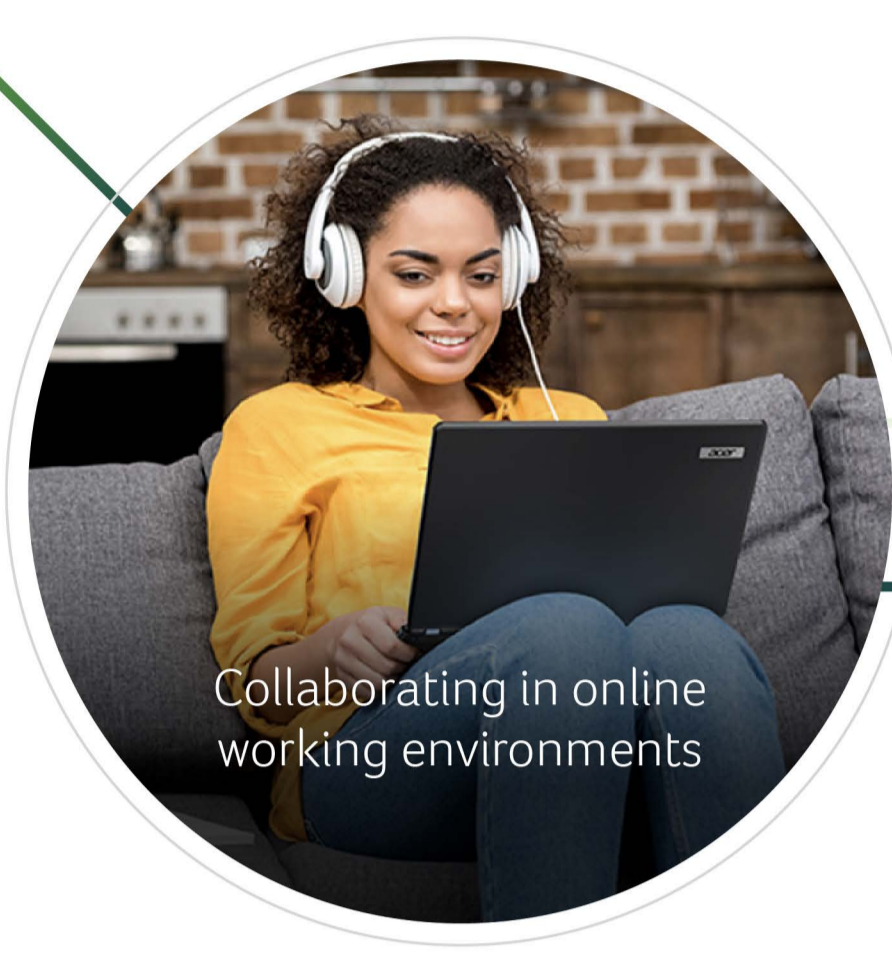
## 20-25%

of workers surveyed WFH between three and five days a week<sup>1</sup>

## An Effective Hybrid Workstation

with high-performance and state-of-the-art security features

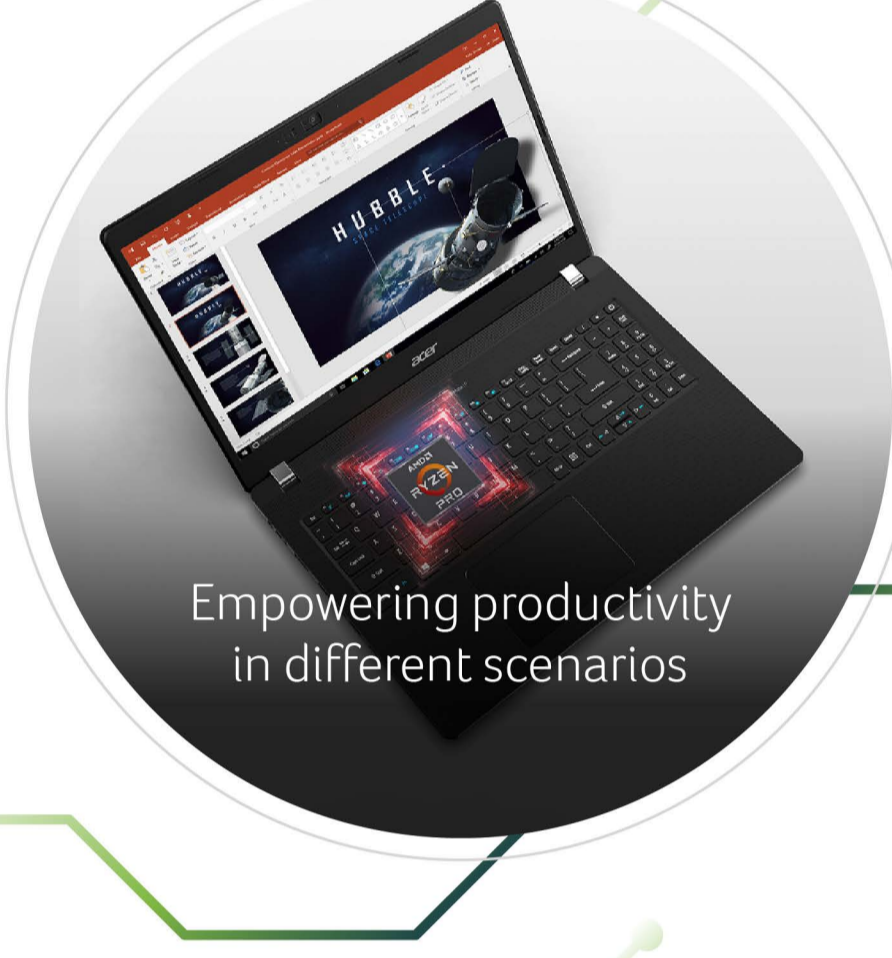
## 5 Key Challenges to "Take Business Anywhere"



Collaborating in online working environments



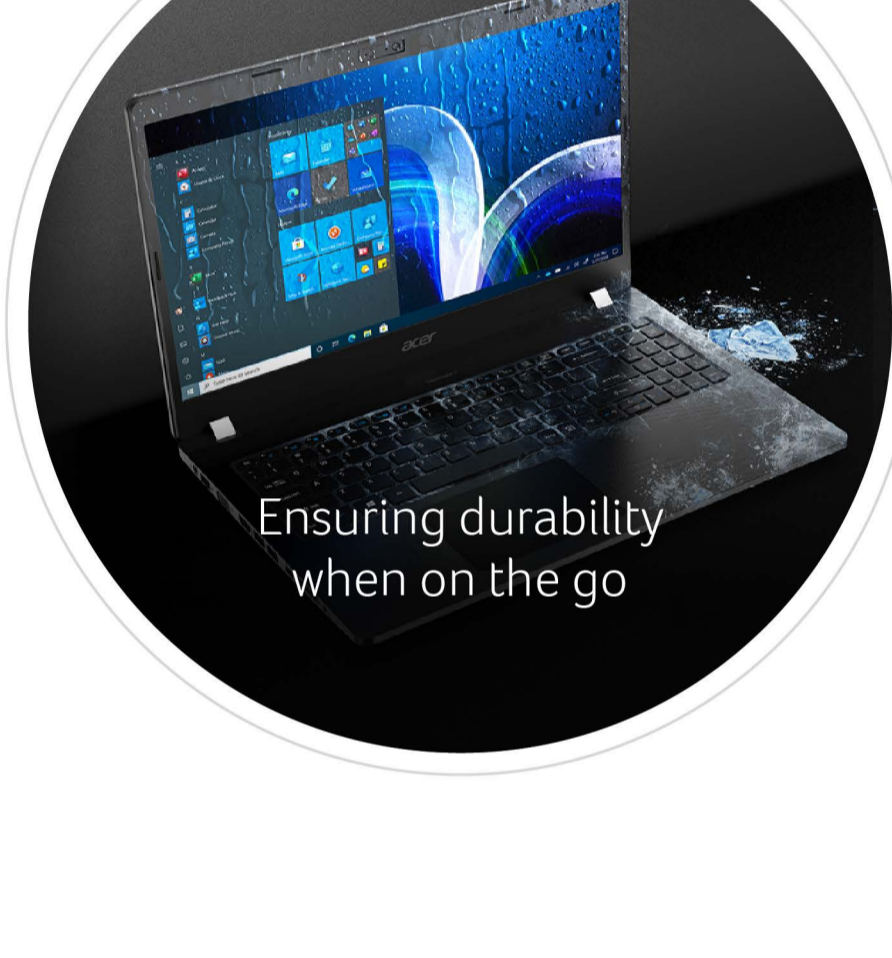
Deploying and managing devices remotely



Empowering productivity in different scenarios



Helping protect user privacy and company data



Ensuring durability when on the go

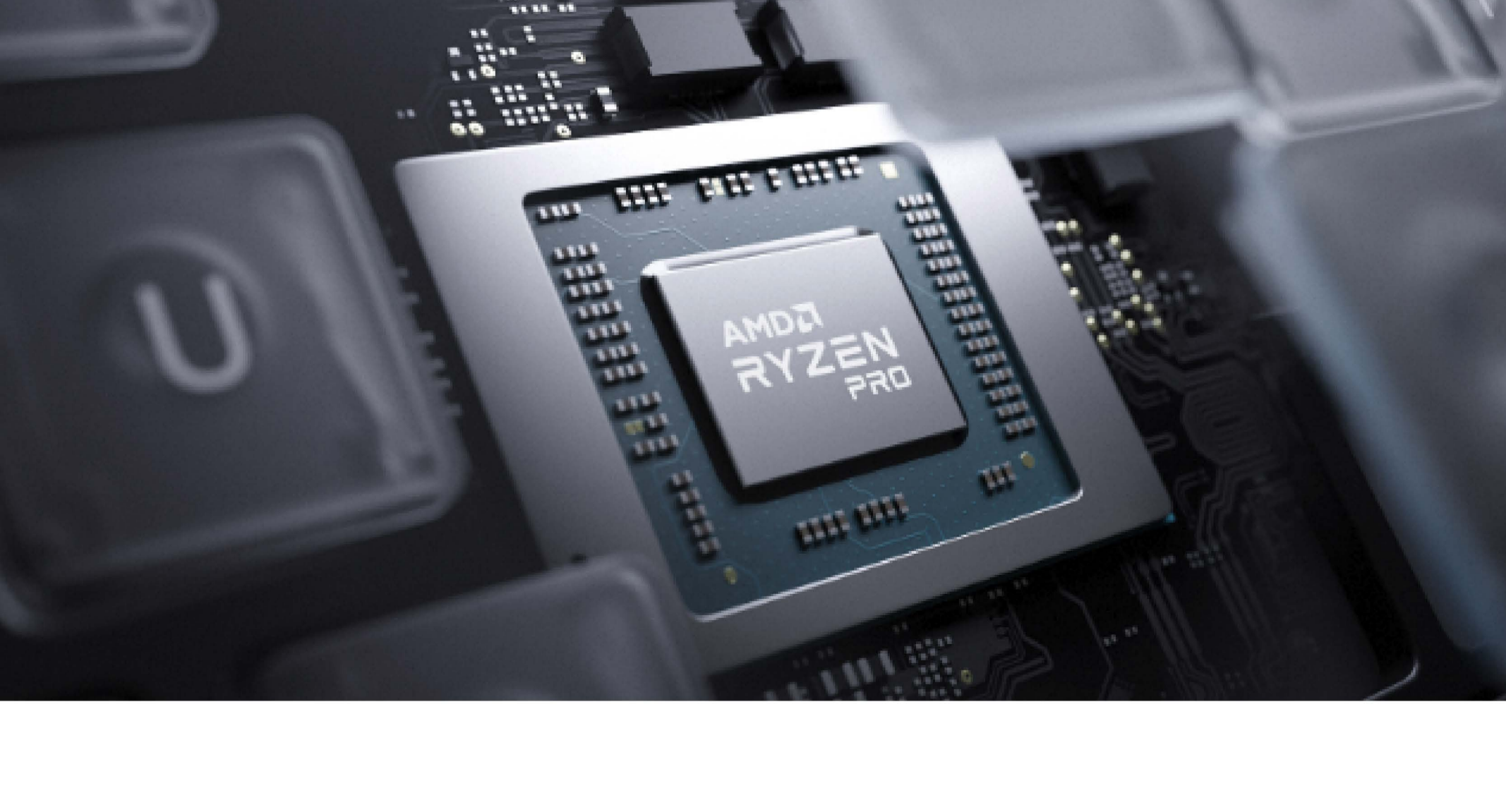
## With a wide range of business and connectivity features, the TravelMate P2 delivers the optimal experience:

- Refined portability
- Stay connected
- Multi-layered security features
- Inspired productivity
- Real-world durability
- Expansive port selection



- Simplified cloud deployment
- Enhanced management
- Multifaceted security features

## Best Professional Performance Edge with AMD Ryzen™ PRO Processors



### Powerhouse Performance

For power-hungry workflows



### Layered Security Features

Designed into every AMD Ryzen™ PRO processor



### For Professionals

Remote collaboration and seamless connectivity

Source

1. McKinsey & Company, "The future of work after COVID-19." 18 February, 2021.