

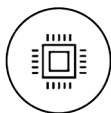
# Performance and Functionality

Packed in a Thin & Light Chassis

The ThinkPad® P51s takes mobility and performance to a whole new level. Made for professionals on the go, the P51s features the latest Intel® Core™ processors and NVIDIA® Quadro® professional graphics. Lenovo's thin and light full-function mobile workstation will also last as long as you can using Power Bridge Technology. The ThinkPad® P51s is MIL-SPEC tested for maximum durability, is ISV certified, and features a beautiful 15.6" 4K UHD IPS display with optional FHD touchscreen.



## WHY YOU SHOULD BUY THE LENOVO™ THINKPAD® P51s MOBILE WORKSTATION



**Mobile performance**  
Thin, light and powerful using Intel® Core™ processors, latest NVIDIA® Quadro® graphics card, up to 32 GB of DDR4 memory, and flexible storage options.



**Stunning visuals**  
Ultra high resolution 4K UHD IPS anti-glare display with wide viewing angles for a premium interactive experience.



**Powered up**  
Power Bridge technology lets users hot-swap the rear battery; giving you freedom from the plug. Power Bridge uses two batteries to keep you going at all times.



**Legendary reliability**  
Engineered to endure the rigors of day-to-day use in the field; the ThinkPad P51s is MIL-SPEC tested so users know they are getting a reliable product that lasts.

## THE LENOVO™ THINKPAD® P51s MOBILE WORKSTATION IS BEST SUITED FOR

- 1** | Engineers and designers who have to have the thinnest, lightest, yet fastest system.
- 2** | Users looking for an ISV certified mobile workstation which ensures superior application performance.
- 3** | Any user who needs their system to withstand the rigors of day-to-day use in the field with this torture-tested ThinkPad tough workstation.

## WHAT'S IN A THINKPAD®

- ① The gold standard in reliability since 1992
- ② Premium materials and layers of reinforcement
- ③ Award winning ergonomic keyboard
- ④ Form factors for all needs
- ⑤ Purposeful design details



## SPECIFICATIONS

### PERFORMANCE

#### Processor

Up to 7<sup>th</sup> Generation Intel® Core™ i7 Processor

#### Operating System

Windows 10 Pro  
Windows 7 Professional<sup>1</sup>

#### Graphics

NVIDIA® Quadro® M520M

#### Memory Slots

2 SODIMM

#### Maximum Memory

32 GB DDR4 - 2133 SDRAM (2 x 16 GB)

#### Internal Storage

HDD : up to 1 TB (5400 rpm)  
SSD : up to 1 TB NVMe PCIe

#### Power Supply

65 W

#### Battery

4 Cell Front (32 WHr)  
3 Cell Rear (24 WHr)  
6 Cell Rear (48 WHr)  
6 Cell Rear (72 WHr)

### CONNECTIVITY

#### Ports

(3) USB 3.0, 1 Always-on Charging  
(1) HDMI 1.4  
(1) USB-C with Intel® Thunderbolt™ 3  
(1) RJ45 Gigabit Ethernet  
(1) Docking Connector  
(1) Microphone / Headphone Combo Jack  
(1) Smart Card Reader<sup>2</sup>

#### WWAN

Intel® 8265 2 x 2 a/c + Bluetooth® 4.1 vPro  
Intel® 8265 2 x 2 a/c + Bluetooth® 4.1

#### WWAN

Sierra EM7455 - 4G LTE-A  
Fibocom L831-EAU

#### Media Card Reader

Integrated 4-in-1 SD Card Reader  
(SD, SDHC, SDXC, MMC)

### DESIGN

#### Dimensions (W x D x H)

(mm) 365.8 x 252.8 x 19.95 - 20.2  
(inch) 14.4 x 9.95 x 0.79 - 0.80

#### Display

FHD (1920 x 1080) IPS, 250 nits  
FHD Touch (1920 x 1080) IPS, 250 nits  
4K UHD (3840 x 2160) IPS, 300 nits

#### Weight

Starting at 4.39 lbs (1.99 kg)

#### Keyboard

ThinkPad® Precision Keyboard with  
Numeric Keypad and Backlit<sup>2</sup>

### SOFTWARE

#### Windows 10 Preload

- Lenovo™ Connect
- Lenovo™ Companion
- Microsoft Office 2013 (trial)
- Lenovo Setting

#### Windows 7 Preload<sup>1</sup>

- Lenovo™ Solution Center
- McAfee™ LiveSafe (30-day trial)
- Microsoft Office 2013 (trial)
- Acrobat Reader
- ThinkVantage® System Update

### GREEN CERTIFICATION

- EPEAT™ Gold (US only)
- ENERGY STAR® 6.1
- GREENGUARD®
- RoHS Compliant

<sup>1</sup> Available with 6<sup>th</sup> Generation Intel Processors only.  
<sup>2</sup> Optional.

## RECOMMENDED SERVICES

Lenovo™ offers a comprehensive portfolio of services to support and protect your ThinkPad® investment. Focus on your customers and business, not your IT.

#### PRIORITY TECHNICAL SUPPORT<sup>3</sup>

Makes your priority, our priority. 24x7 priority call routing to advanced-level technicians, electronic incident tracking, and rapid response and resolution.

#### WARRANTY UPGRADES - ON-SITE AND NEXT BUSINESS DAY

Maximizes PC uptime and productivity by providing convenient, fast repair service the next business day.

#### WARRANTY EXTENSIONS

##### (1-TO-4 YEARS TOTAL DURATION)

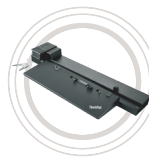
This fixed-term, fixed-cost service helps accurately budget for PC expenses, protect your valuable investment and potentially lower the cost of ownership over time.

#### KEEP YOUR DRIVE

Retain your drive if it should happen to fail, giving you the peace of mind to know that your valuable data is secure. KYD applies to all drives within multi hard disk/SSD systems.

<sup>3</sup> Not available in all regions.

## OPTIONS & ACCESSORIES



ThinkPad® Workstation Dock

PN: 40A50230xx



Lenovo™ Privacy Filters from 3M™

PN: 4XJOL59633 (Touch)

OA61771(Non-touch)



For more information, visit [www.lenovopartnernetwork.com](http://www.lenovopartnernetwork.com) or [www.lenovopartnernetwork.com/ca](http://www.lenovopartnernetwork.com/ca)

