

SAMSUNG

When business takes you on the road, take business with you.



Galaxy Tab[®] A

Maximize mobility and productivity while ensuring security.

Empower your team to work from anywhere. The Samsung Galaxy Tab A Wi-Fi and LTE tablets are powerful business tools designed to improve productivity and workflow efficiencies throughout the mobile enterprise. Productivity is improved through real-time communication, and Samsung Knox™ enterprise-grade security protects sensitive data. They're the ideal field companion for workforces on the move.



Facilitate Mobility Anywhere

The thin, lightweight design of the Galaxy Tab A tablets allows employees to work from anywhere, and enable better productivity, collaboration and communication. With up to 15 hours of battery life¹ (Tab A 10.5"), they can be productive all day. Add optional keyboards and a case with stand for powerful productivity solutions.



Enhanced Power and Connectivity

Android Oreo 8.1 provides enhanced business features such as battery-saving capabilities, multi-window multitasking,² and enhanced security. Connectivity includes Dual Band Wi-Fi, Wi-Fi Direct, LTE and Bluetooth 4.2. And processors of up to 1.8 GHz octa-core (Tab A 10.5") provide powerful performance.



Enterprise Security and Mobility Management

Protect sensitive data with the Samsung Knox defense-grade security platform. Samsung Knox IT solutions provide end-to-end solutions that are trusted and secure. Explore your options from device configuration, deployment and maintenance, to enterprise mobility management, to data protection and container solutions.³

Contact Us: samsung.com/b2btablets

Galaxy Tab A



	Galaxy Tab A 8" (Wi-Fi)		Galaxy Tab A 8" (LTE)	Galaxy Tab A 10.5" (Wi-Fi)	Galaxy Tab A 10.5" (LTE)
Part Numbers	16GB	Black SM-T380NZKIXAR Silver SM-T380NZSIXAR	AT&T SM-T387AZKAATT Sprint SM-T387PZKASPR T-Mobile SM-T387TZKATMB Verizon SM-T387VZKAVZW	Black SM-T590NZKAXAR Gray SM-T590NZAXAR	Verizon SM-T597VZKAVZW (COO Vietnam) Verizon SM-T597VZKGVZW (COO S.Korea)
	32GB	Black SM-T380ZKEXAR Silver SM-T380ZSEXAR			
Operating System	Android 8.1 Oreo		Android 8.1 Oreo	Android 8.1 Oreo	Android 8.1 Oreo
CPU	Qualcomm Snapdragon 425 (APQ8017)		Qualcomm Snapdragon 425 (MSM8917)	Qualcomm Snapdragon 450	Qualcomm Snapdragon 450
Processor	Quad-Core 1.4GHz		Quad-Core 1.4GHz	Octa-Core 1.8GHz	Octa-Core 1.8GHz
Memory (RAM) ⁴	2 GB		2 GB	3 GB	3 GB
Memory (Internal) ⁵	16 GB or 32 GB		32 GB	32 GB	32 GB
Memory (External / MicroSD™ Capacity) ⁶	MicroSD (up to 400 GB)		MicroSD (up to 400 GB)	MicroSD (up to 400 GB)	MicroSD (up to 400 GB)
Display Screen Size	8"		8"	10.5"	10.5"
Display Type	TFT		TFT	TFT	TFT
Display Resolution	WXGA (1280 x 800)		WXGA (1280 x 800)	WUXGA (1920 x 1200)	WUXGA (1920 x 1200)
Touchscreen	Yes		Yes	Yes	Yes
Number of Speakers	1		1	2	2
Earphone Jack	3.5mm		3.5mm	3.5mm	3.5mm
Microphone	Yes		Yes	Yes	Yes
Camera Back / Front / Autofocus / Flash	8MP / 5MP / Yes / Yes		5MP / 2MP / Yes / No	8MP / 5MP / Yes / Yes	8MP / 5MP / Yes / Yes
USB / USB Port	USB 2.0 / USB Type-C		USB 2.0 / Micro USB	USB 2.0 / USB Type-C	USB 2.0 / USB Type-C
Wi-Fi	802.11 a/b/g/n (2.4GHz + 5GHz)		802.11 a/b/g/n (2.4GHz + 5GHz)	802.11 a/b/g/n/ac (2.4GHz + 5GHz)	802.11 a/b/g/n/ac (2.4GHz + 5GHz)
Wi-Fi Direct (Wi-Di)	Yes		Yes	Yes	Yes
Carrier Support	N/A		AT&T, Sprint, T-Mobile, Verizon	N/A	Verizon
Bluetooth	4.2		4.2	4.2	4.2
GPS	Yes		Yes	Yes	Yes
Battery Capacity	5,000 mAh		5,000 mAh	7,300 mAh, Fast Charging	7,300 mAh, Fast Charging
Battery Type	Li-Ion		Li-Ion	Li-Ion	Li-Ion
Use Time ¹	Internet: Up to 14 hours		Internet, LTE: Up to 13 Hours / 3G: Up to 12 Hours / Standby: Up to 30 Days	Internet: Up to 15 hours	Internet: Up to 15 hours
Security	Knox 3.2		Knox 3.2	Knox 3.2	Knox 3.2
Temp. Range (Operating / Non-Operating)	0 – 35°C (32 – 95°F)		0 – 35°C (32 – 95°F)	0 – 35°C (32 – 95°F)	0 – 35°C (32 – 95°F)
Recycled / Recyclable Packaging	Yes / Yes		Yes / Yes	Yes / Yes	Yes / Yes
Standard Warranty	1 Year		1 Year	1 Year	1 Year
Dimensions H x W x D	8.35" x 4.88" x 0.35" / 212.1 mm x 124.1 mm x 8.9 mm		8.13" x 4.99" x 0.35" / 206.6 mm x 126.7 mm x 8.9 mm	10.23" x 6.33" x 0.31" / 259.9 mm x 160.9 mm x 8.0 mm	10.23" x 6.34" x 0.31" / 259.9 mm x 161.1 mm x 8.0 mm
Weight	0.79 lbs.		0.79 lbs.	1.17 lbs.	1.19 lbs.

Device Layout

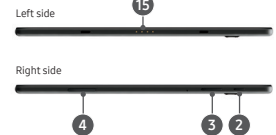
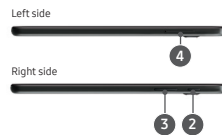
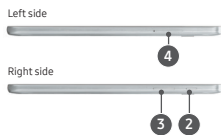
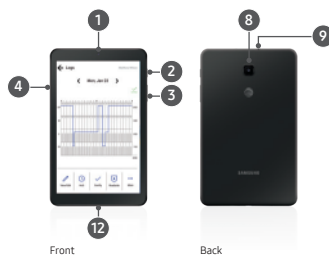
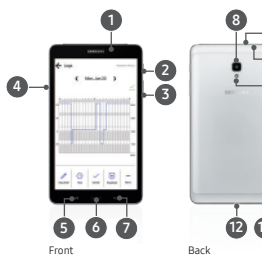
1. Front Camera
2. Power Button
3. Volume Button
4. MicroSD Card Tray
5. Recent Button
6. Home Button
7. Back Button
8. Rear Camera
9. Earphone Jack
10. Microphone
11. Flash
12. USB Charger / Accessory Port
13. Speaker
14. Light Sensor
15. Charging Dock Port

Galaxy Tab® A 8" (Wi-Fi)

Galaxy Tab® A 8" (LTE)

Galaxy Tab® A 10.5" (Wi-Fi)

Galaxy Tab® A 10.5" (LTE)



Learn More

samsung.com/business insights.samsung.com samsung.com/b2btablets

Product Support

1-866-SAM4BIZ

Follow Us

[youtube.com/samsungbizusa](https://www.youtube.com/samsungbizusa) [@SamsungBizUSA](https://twitter.com/SamsungBizUSA)

SAMSUNG