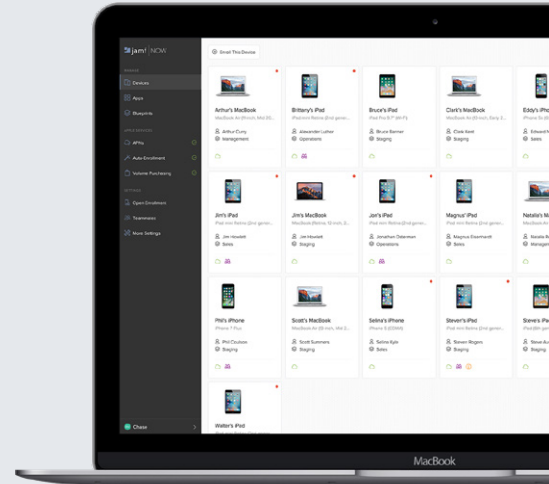


Mobile device management focused on small and medium business

Set up, Manage, Secure.



Why Jamf Now?

Jamf Now is simple, straightforward and easy to manage.



Setup

Without a management solution it can take a surprising amount of time to set up all of your Apple devices at work. With Jamf Now you can remotely configure devices quickly and easily.



Manage

Device management is an ongoing task. Make it as turnkey as possible by leveraging Jamf Now to deploy apps, view device details and get a 360-degree view of your inventory.



Secure

Use Jamf Now to ensure sensitive company information your employees access remains secure. Remotely enforce passcodes, encryption and even lock or wipe devices.



Features of Jamf Now:



Automatic Setup

Automate device enrollment to eliminate tedious manual setups.



Device Security

If a device is lost or stolen, it can be remotely locked or wiped completely.



Wifi Settings

Configure your devices to automatically join your secure wireless networks.



Device Inventory

Keep track of device settings with current details and status reports.



App Distribution

Distribute free apps or ones purchased through Volume Purchasing.



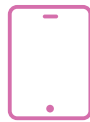
Email Setup

Automatically configure company email accounts to all of your devices.



Blueprints

Create multiple Blueprints to define different settings and apps for different devices within your deployment.



Single App Mode

Lock your supervised iOS or iPadOS device to a single app to focus the device for a specific need such as for point-of-sale or a kiosk in retail locations.



Custom Apps & Profiles

Jamf Now gives you even more flexibility with the ability to deploy custom applications and profiles in the Jamf Now Plus Plan.



www.jamf.com

© 2002-2020 Jamf, LLC. All rights reserved.

To learn more about how Jamf Now can support your Apple device deployments, contact your Jamf Authorized Reseller.