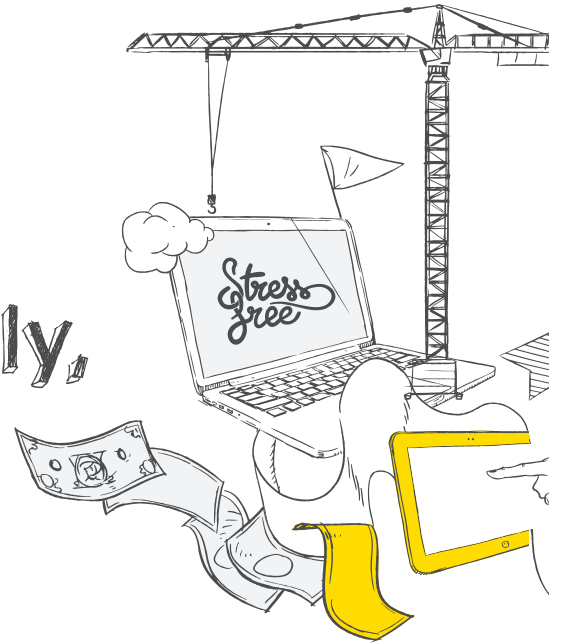


ClickShare

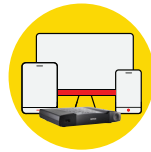
10 reasons to have a CSE-200+ in your enterprise

Collaborate creatively, brainstorm better

Boost your creative meetings, brainstorming and discussions with **ClickShare CSE-200+**, an interactive experience for medium-sized meeting rooms. We give you 10 reasons why our wireless collaboration solution, **CSE-200+** is the perfect match for richer collaboration at your company.



Choose how you share:
Button, App or both for
richer sharing



Bring your own
device. For
both guests and
employees



Explore creativity with
interactivity features:
blackboarding, annotation,
touch back support



Enjoy a worry-free
system with 3 levels
of security



2 users screen
on a 4K canvas



Wow with stunning
video performance
and audio in perfect
harmony



AV switching:
HDMI input for
legacy equipment



Central management
with ease of all
devices



Reduce the amount of
cables and clutter



Seamless integration
with IT networks and
dual network support

