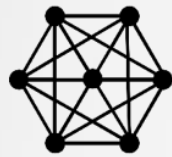


New Features and Enhancements

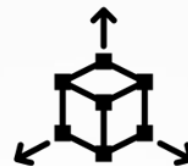
Autodesk Revit 2020

Connect



- ✓ PDF Into Revit
- ✓ Publish Cloud Model on Revit Home
- ✓ Cloud Models for Revit Update
- ✓ Support for Sketchup 2018 Import and Link
- ✓ Revit Extension for Fabrication Exports

Create



- ✓ Elliptical Walls
- ✓ Improved Rebar Copy & Move Logic
- ✓ Multi Rebar Annotation to Concrete Faces
- ✓ Multi Rebar Annotation for Free Form Rebar
- ✓ Rebar in Model-in-place Stairs
- ✓ Steel Connections Propagation
- ✓ Steel Connections Grouping
- ✓ Tags & Dimensions of Steel Elements
- ✓ Electrical Homerun Wiring Improvements

Optimize



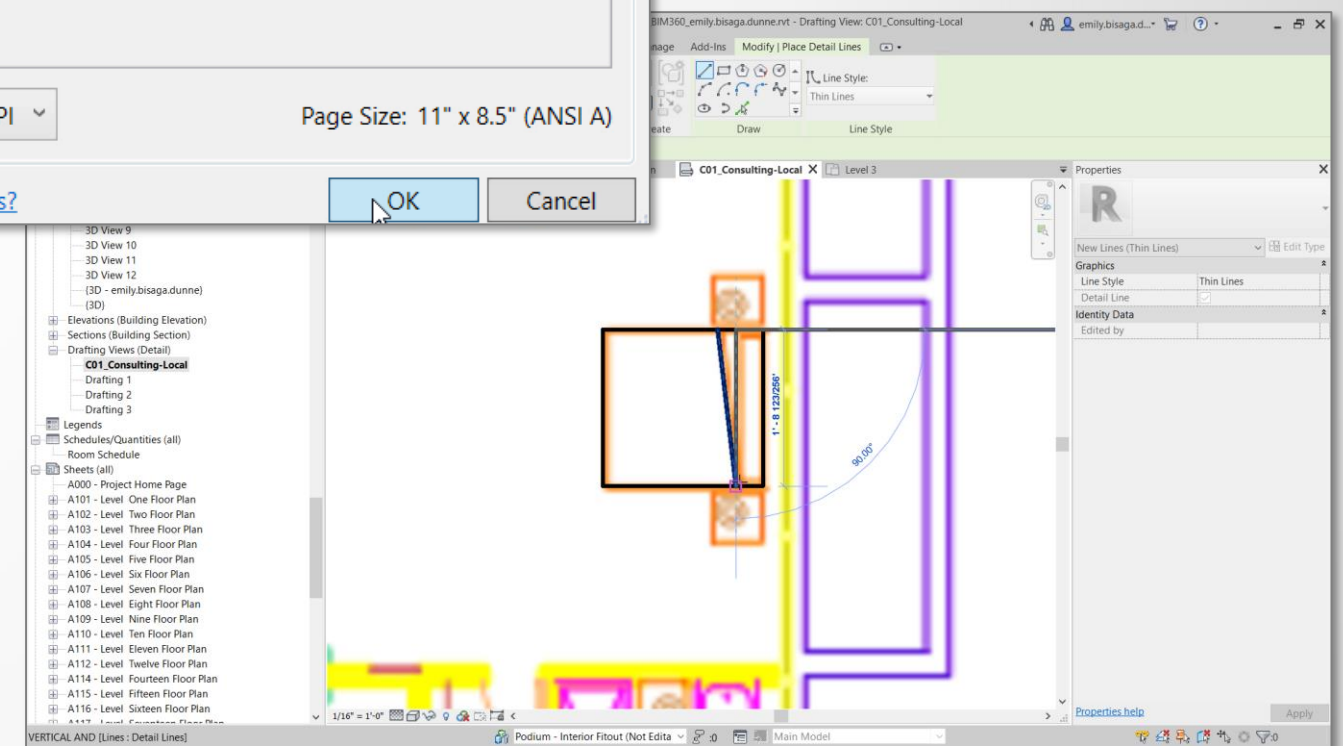
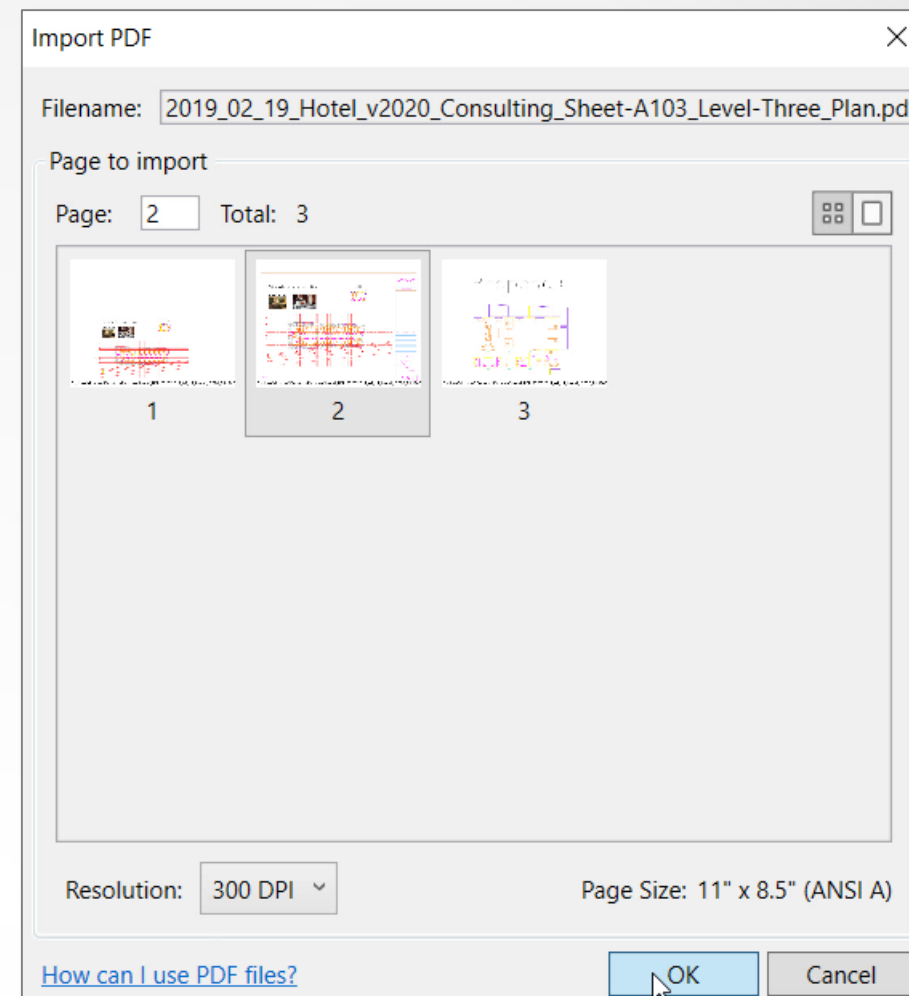
- ✓ Path of Travel
- ✓ Improved OR in View Filters
- ✓ Material Appearance Improvement
- ✓ Material User Interface Improvements
- ✓ Image and PDF improvements
- ✓ Tag, Schedule and View Filter for Elevation
- ✓ Track and Edit Scope Box Parameter in View List
- ✓ Copy and Paste Legends Across Sheets
- ✓ Create Parts from Imported Geometry
- ✓ InfoCenter Reduction
- ✓ Dynamo 2.1 Ships with 2020
- ✓ Steel Connections for Dynamo
- ✓ Enhanced Performance for Detailed Steel Models
- ✓ Additional Parameters for Steel Components
- ✓ Electrical panel feed through lugs connection
- ✓ Change Service Improvements

Connect

Autodesk Revit 2020

PDF Into Revit

- Use PDFs directly
- Full BIM 360 or Connected Desktop Support
- Able to snap to geometry in the view



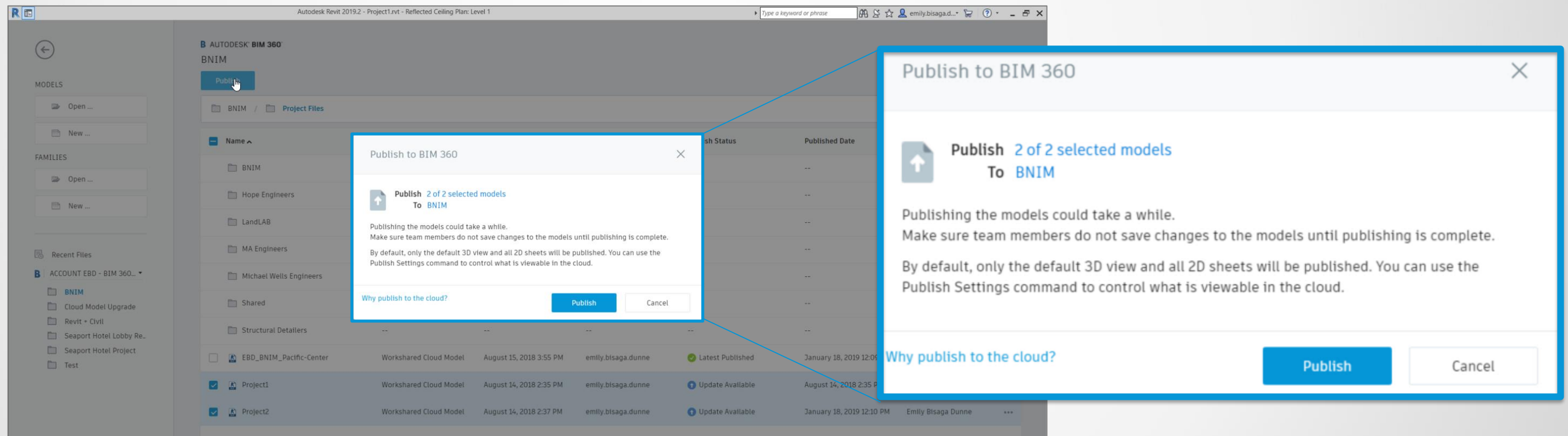
Better support construction workflows and work with legacy documents

Connect

Autodesk Revit 2020

Publish Cloud Models on Revit Home

- Publish model for view and reference in BIM 360



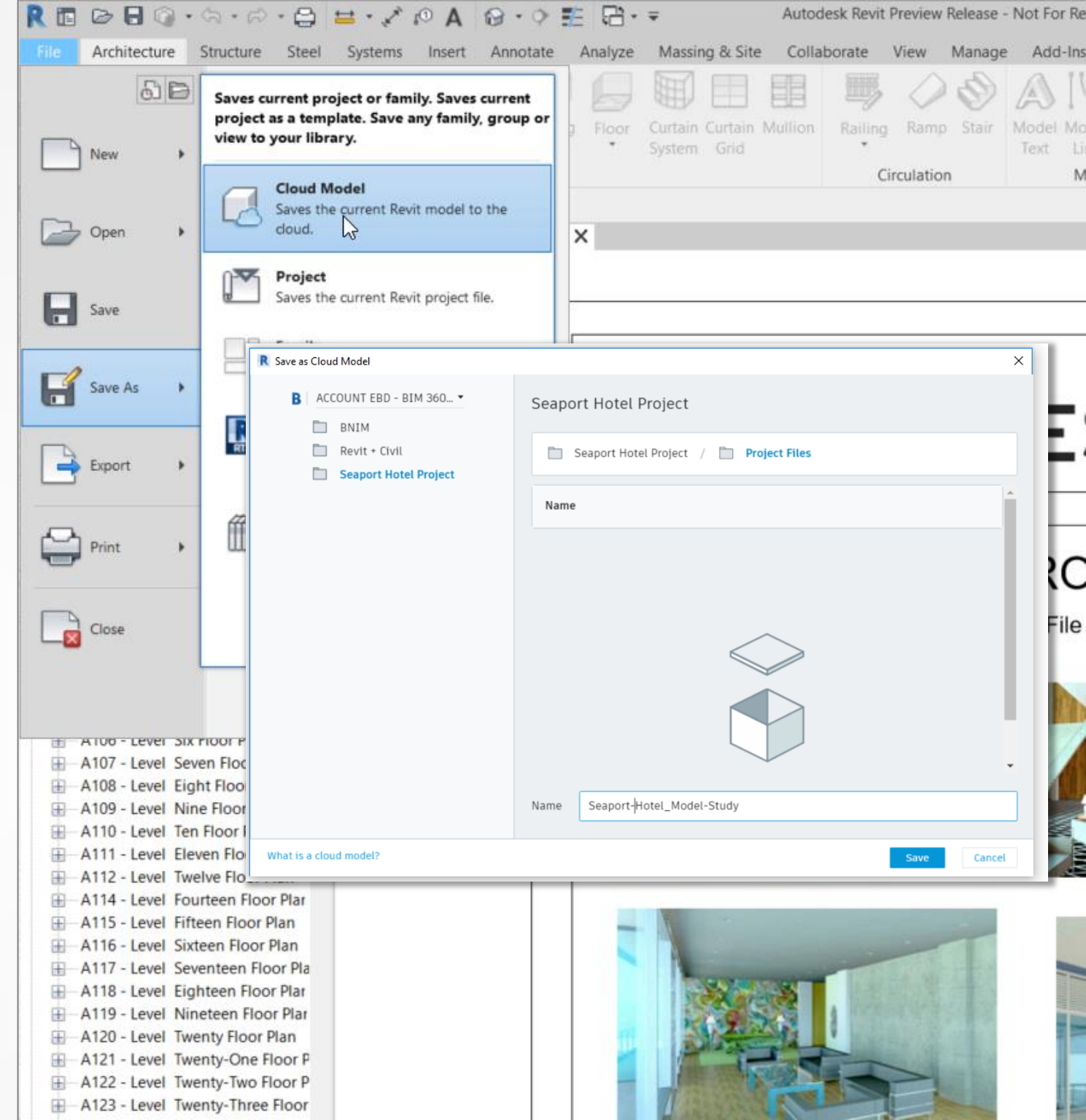
Easier access and a tighter integration with the BIM 360 platform

Connect

Autodesk Revit 2020

Cloud Models for Revit Update

- Store and access **workshared** and non-workshared models in the cloud
- Utilize BIM 360 for cloud storage
- Provides individual contributors and larger internal teams a connection to BIM 360 platform



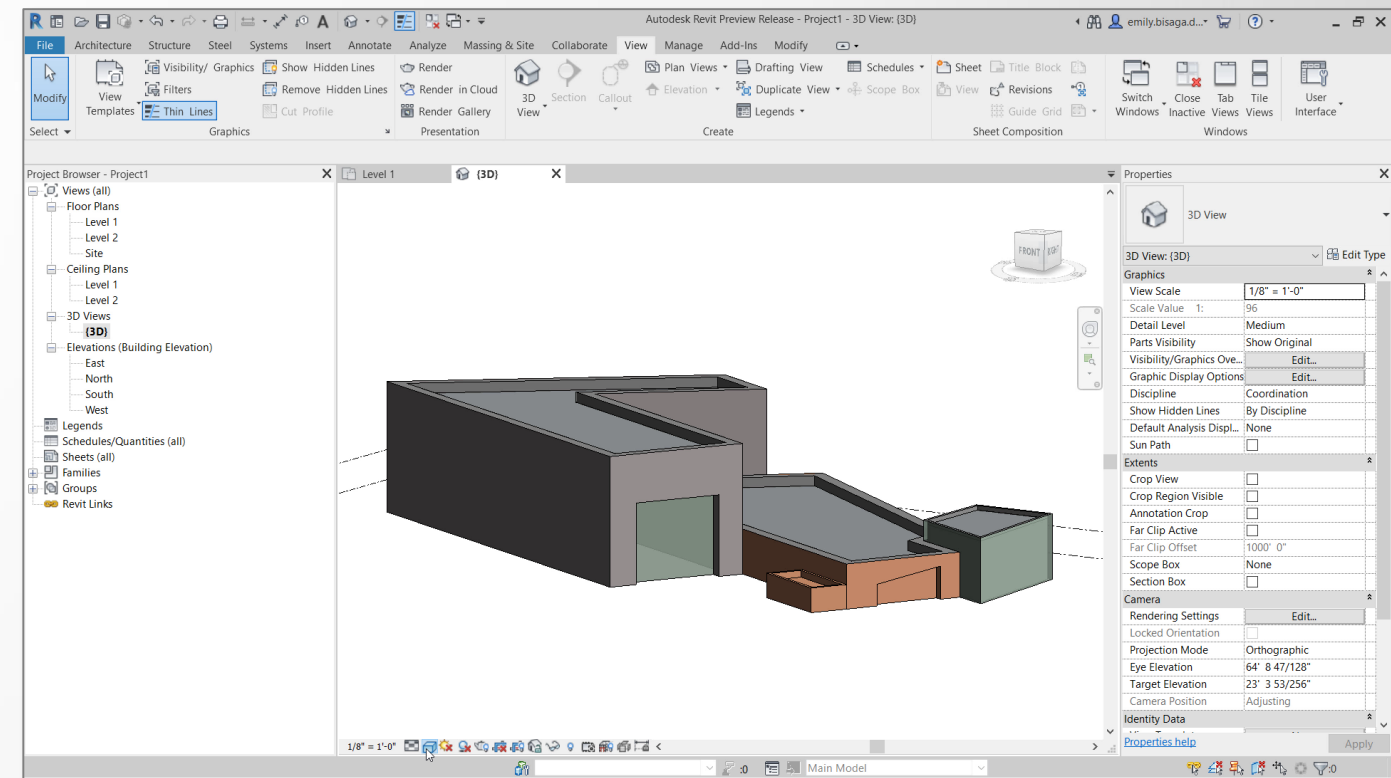
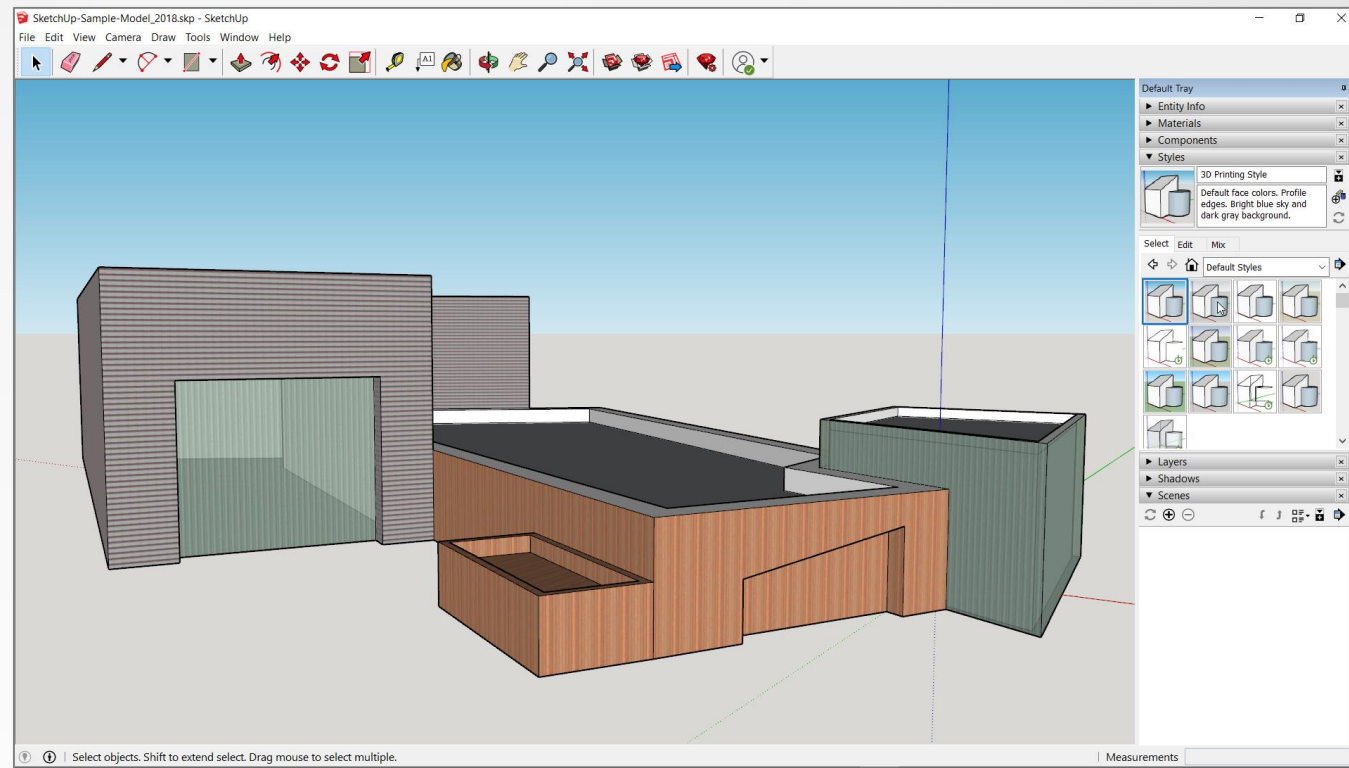
Easier access and a tighter integration with the BIM 360 platform

Connect

Autodesk Revit 2020

Support for Sketchup 2018 Import and Link

- Supports up to 2018 Version of SketchUp into Revit
- Colors from Sketchup model imported in Revit



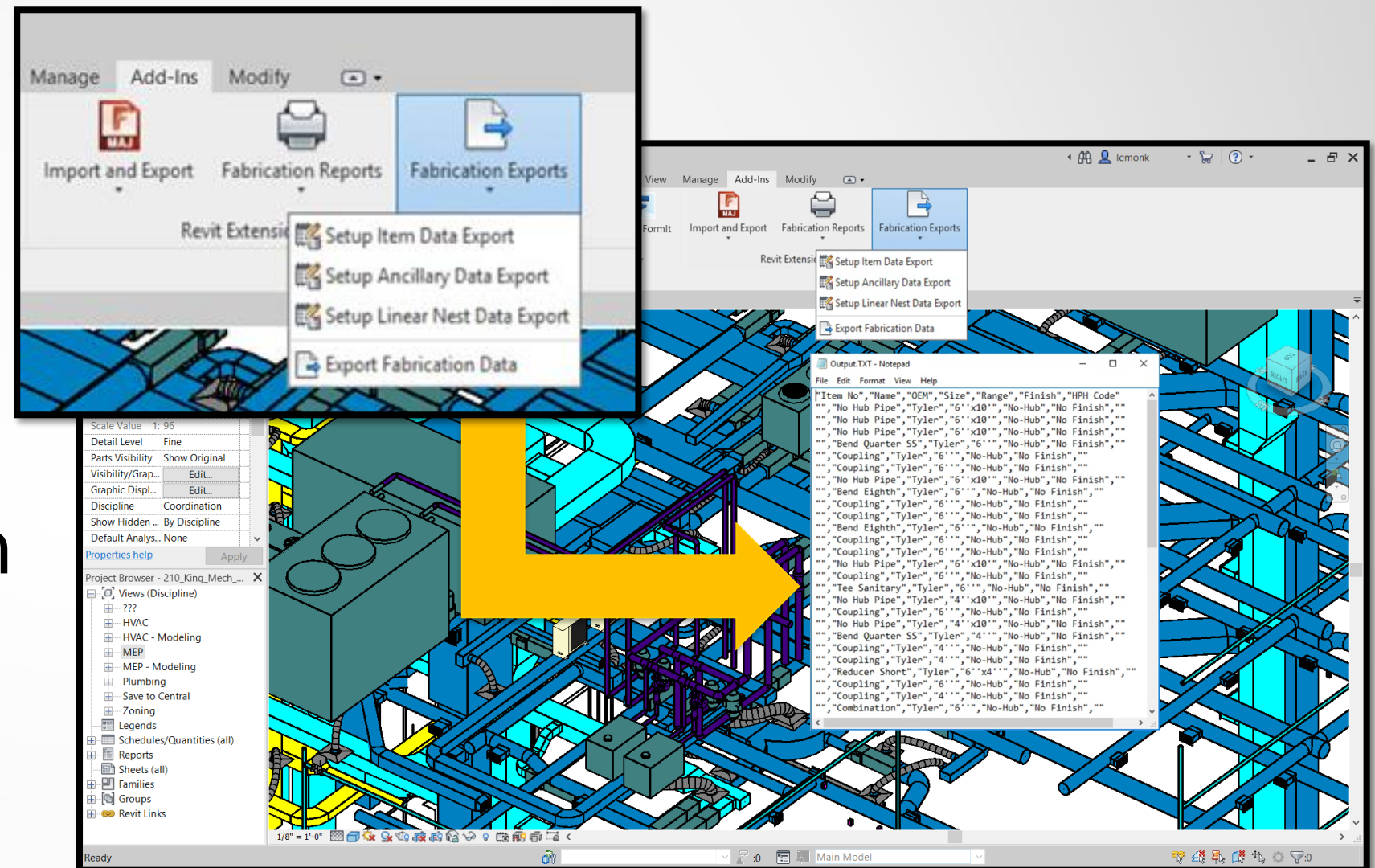
Makes it easier to transfer data from sketch model to design model

Connect

Autodesk Revit 2020

Revit Extension for Fabrication Exports

- Setup data exports
- Reuse formats in fabrication databases
- Extend data to fabrication and procurement

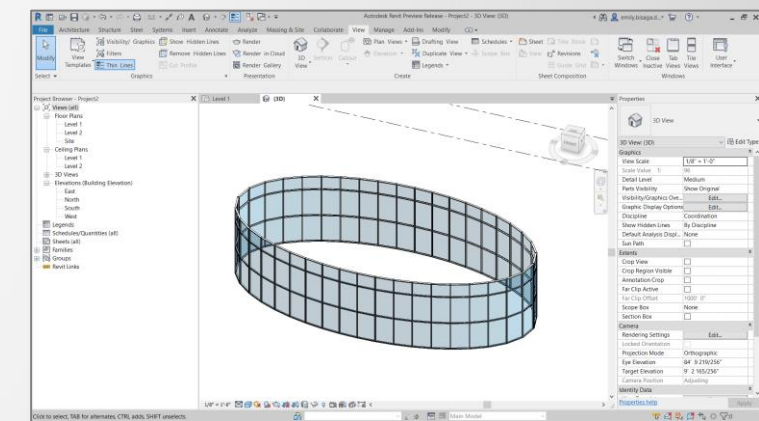
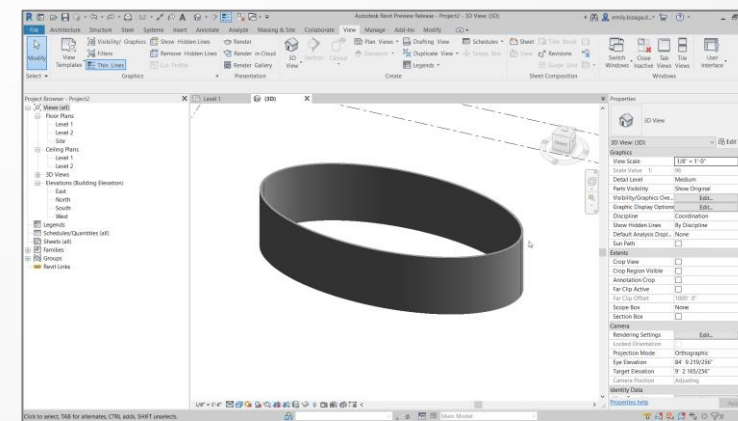
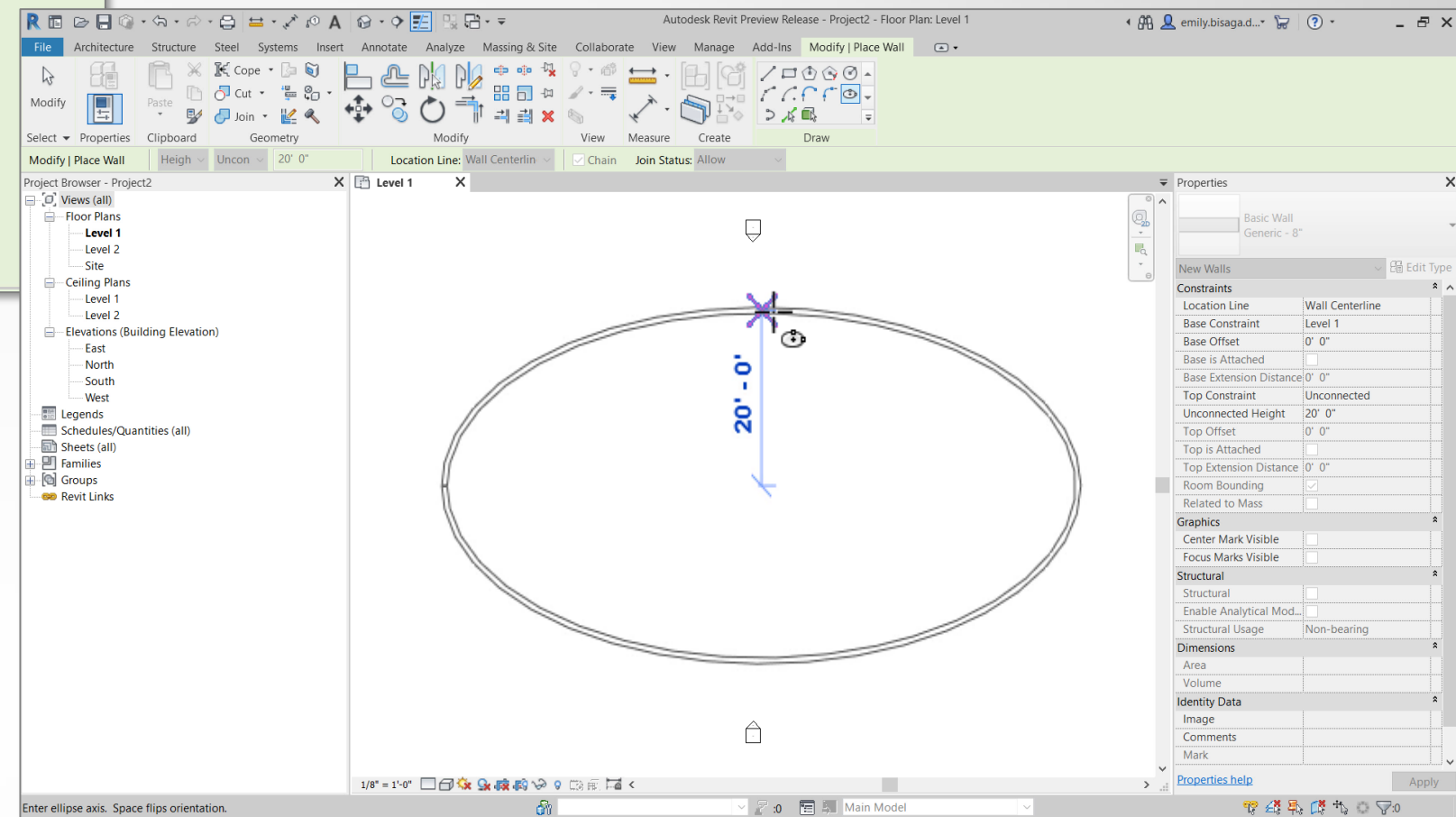
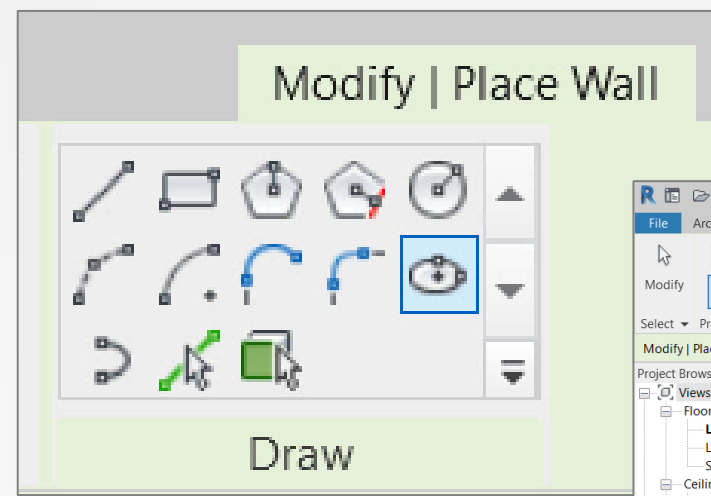


Extend user-definable data to spreadsheets for data driven workflows.

Create Autodesk Revit 2020

Elliptical Walls

- Ellipse in draw panel for walls
- Ability to change type
- Centerline location line
- Switch types easily



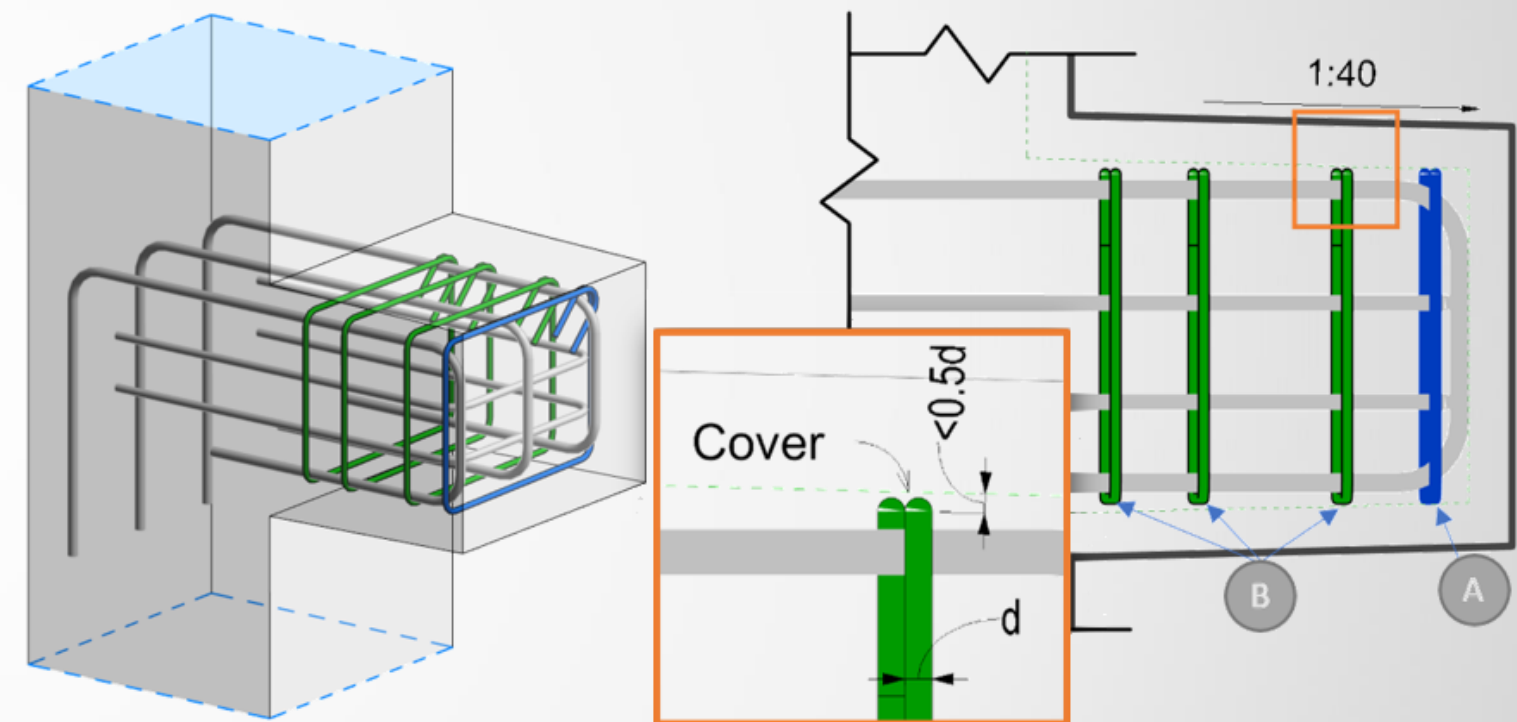
Improves ability to create advanced wall geometry in Revit

Create

Autodesk Revit 2020

Improved Rebar Copy & Move Logic

- Improved rebar snapping to the cover
- Preserve bar dimensions during interaction with concrete cover
- Get consistent rebar fabrication data when copying bars



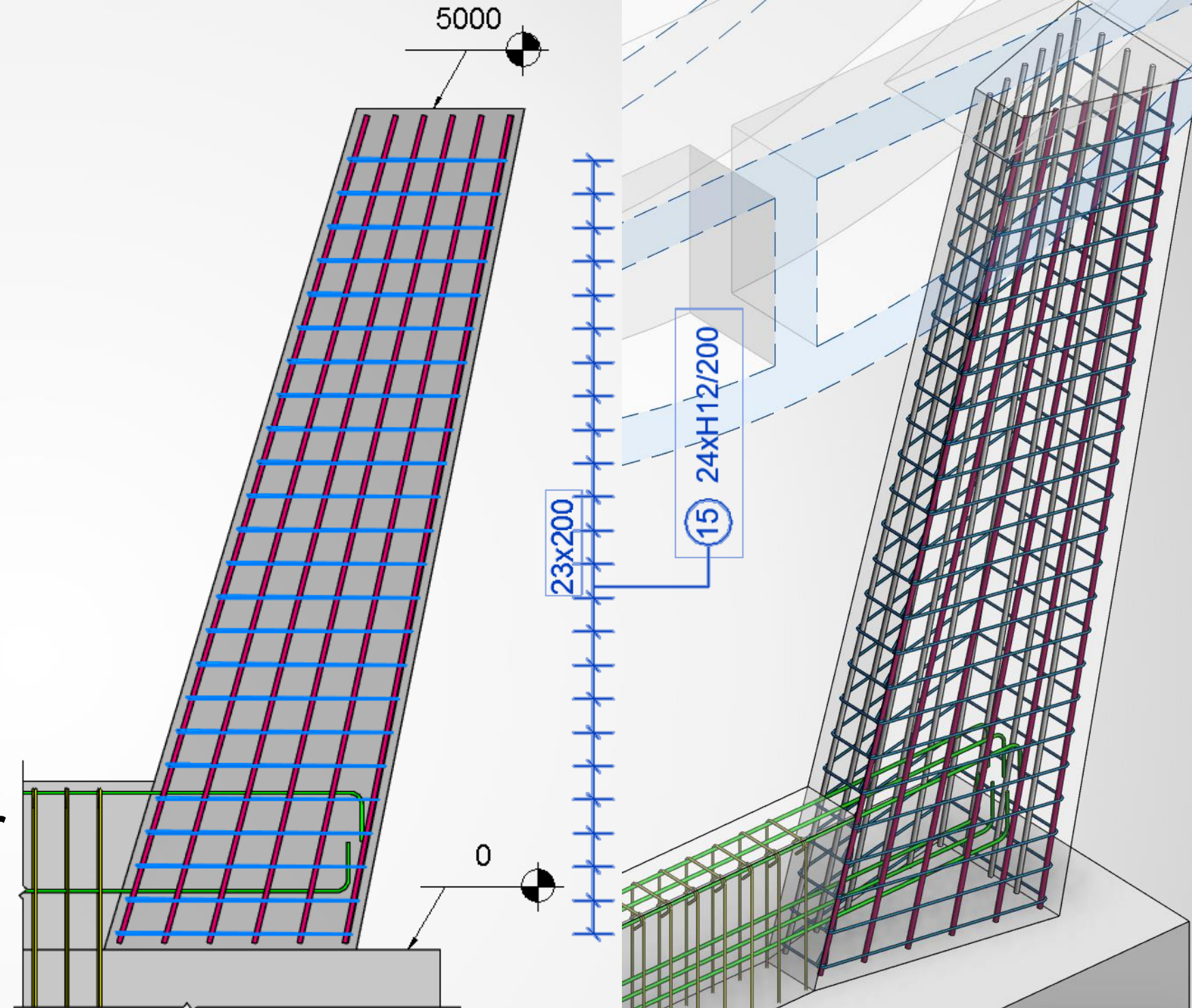
Increased precision for Fabrication for copied and edited rebar

Create

Autodesk Revit 2020

Multi Rebar Annotation for Free Form Rebar

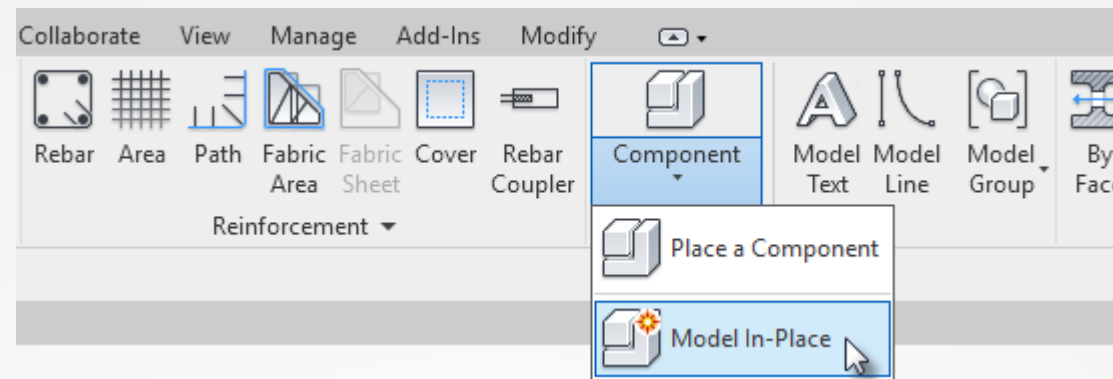
- Dimension free form rebar sets with planar and parallel bars
- Enhanced documentation for reinforced concrete projects



Enhanced productivity and accuracy when documenting rebars in complex geometries

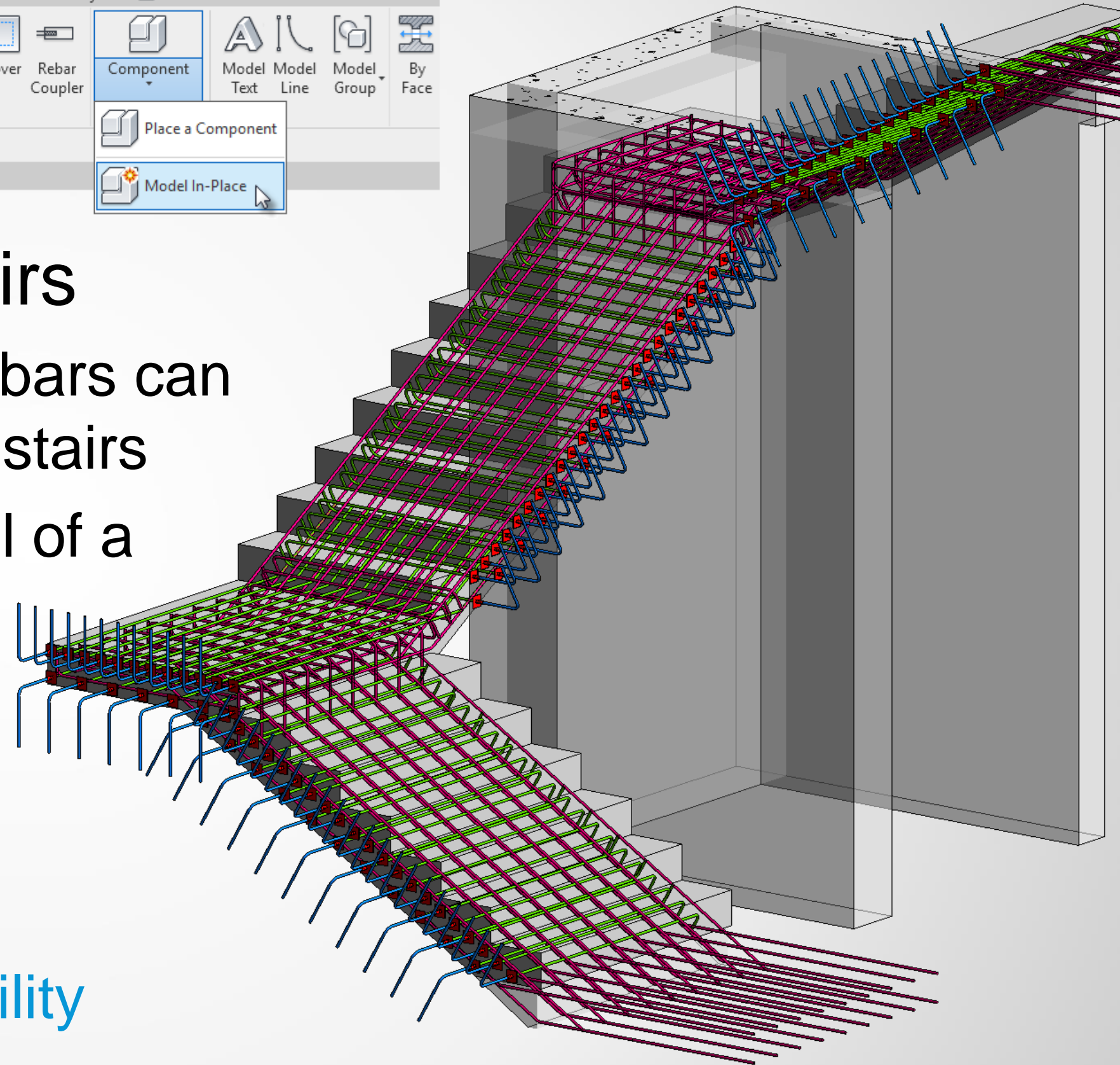
Create

Autodesk Revit 2020



Rebar in Model-in-place Stairs

- Shape driven or free form rebars can be hosted in model-in-place stairs
- Deliver a fully detailed model of a concrete stairs



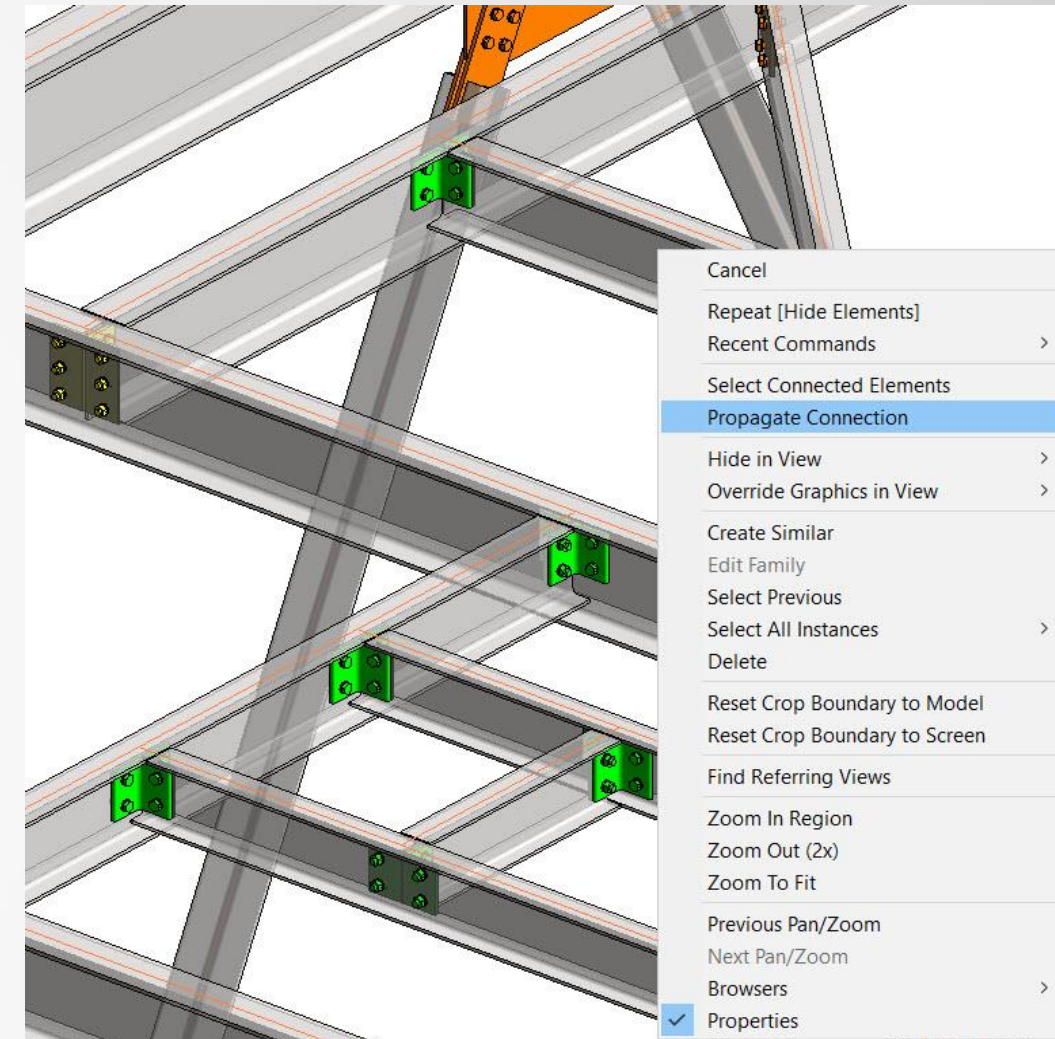
Increase 3D rebar modeling versatility

Create

Autodesk Revit 2020

Steel Connections Propagation

- New option in the contextual menu
- Available for any steel connections available out-of-the-box
- Same framing conditions required
- Relevant to visible steel members



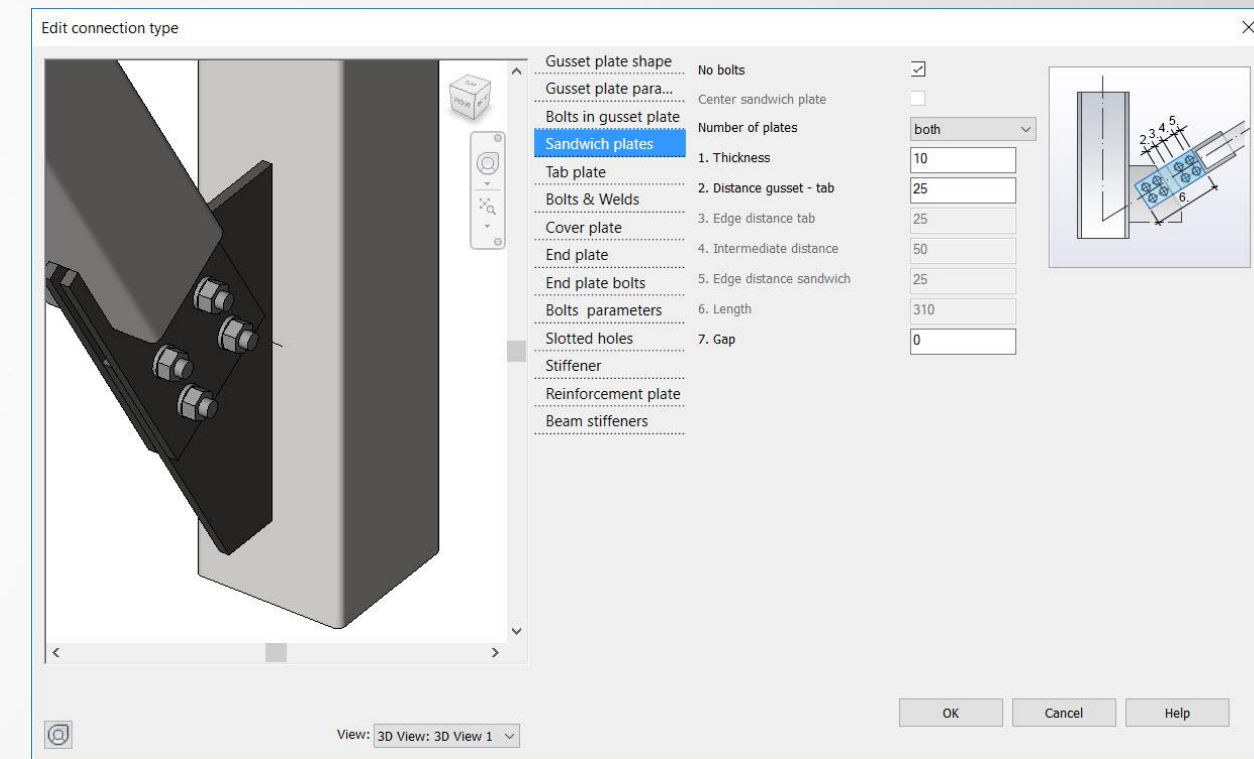
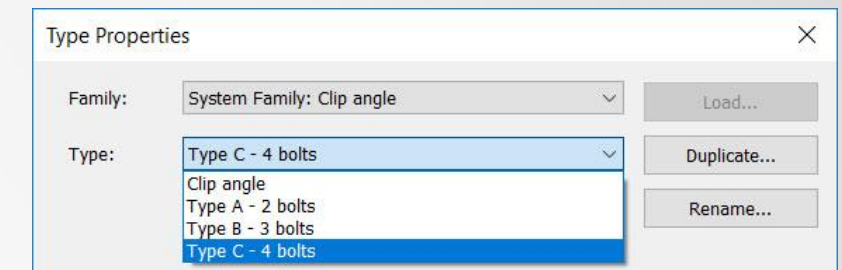
Quickly place the same steel connections in your project

Create

Autodesk Revit 2020

Steel Connections Grouping

- New type editor with preview
- Easily configure different types of connections
- Update all instances of the same type from one place
- Reuse them in same or other project



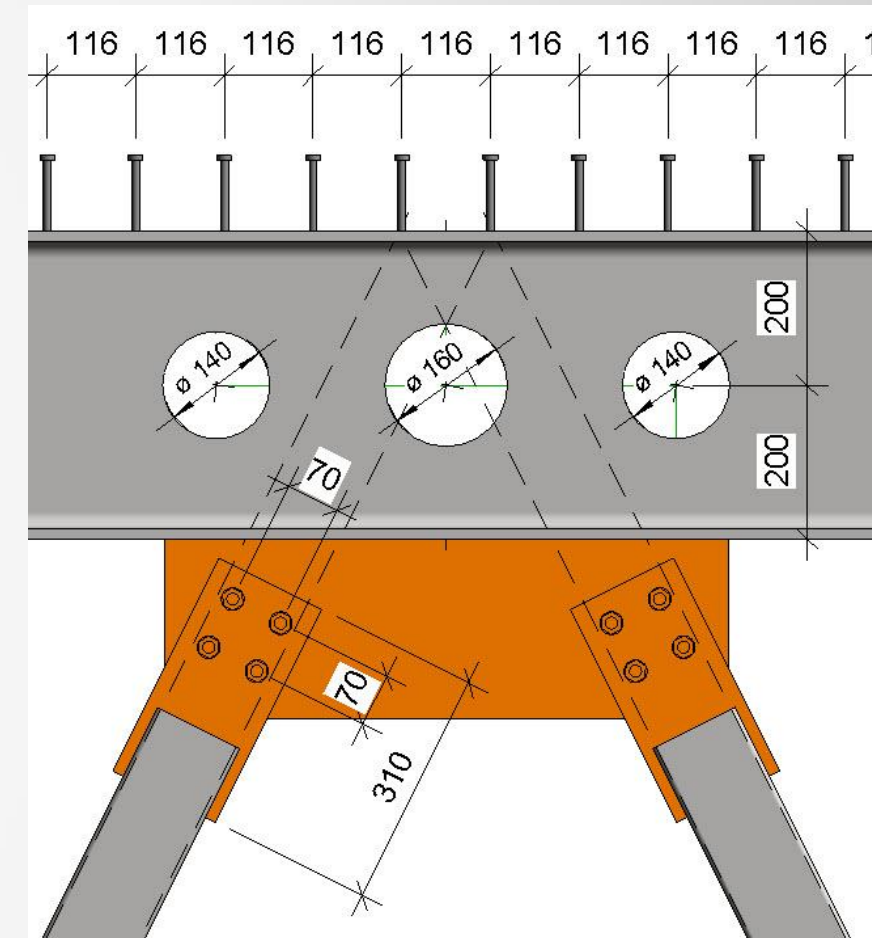
Manage repetitive connection design more easily and efficiently

Create

Autodesk Revit 2020

New Features for Tags and Dimensions of Steel Elements

- Radial & diameter dimensions of circular openings
- Dimension for holes and shear studs
- Now allow weld tags in any view



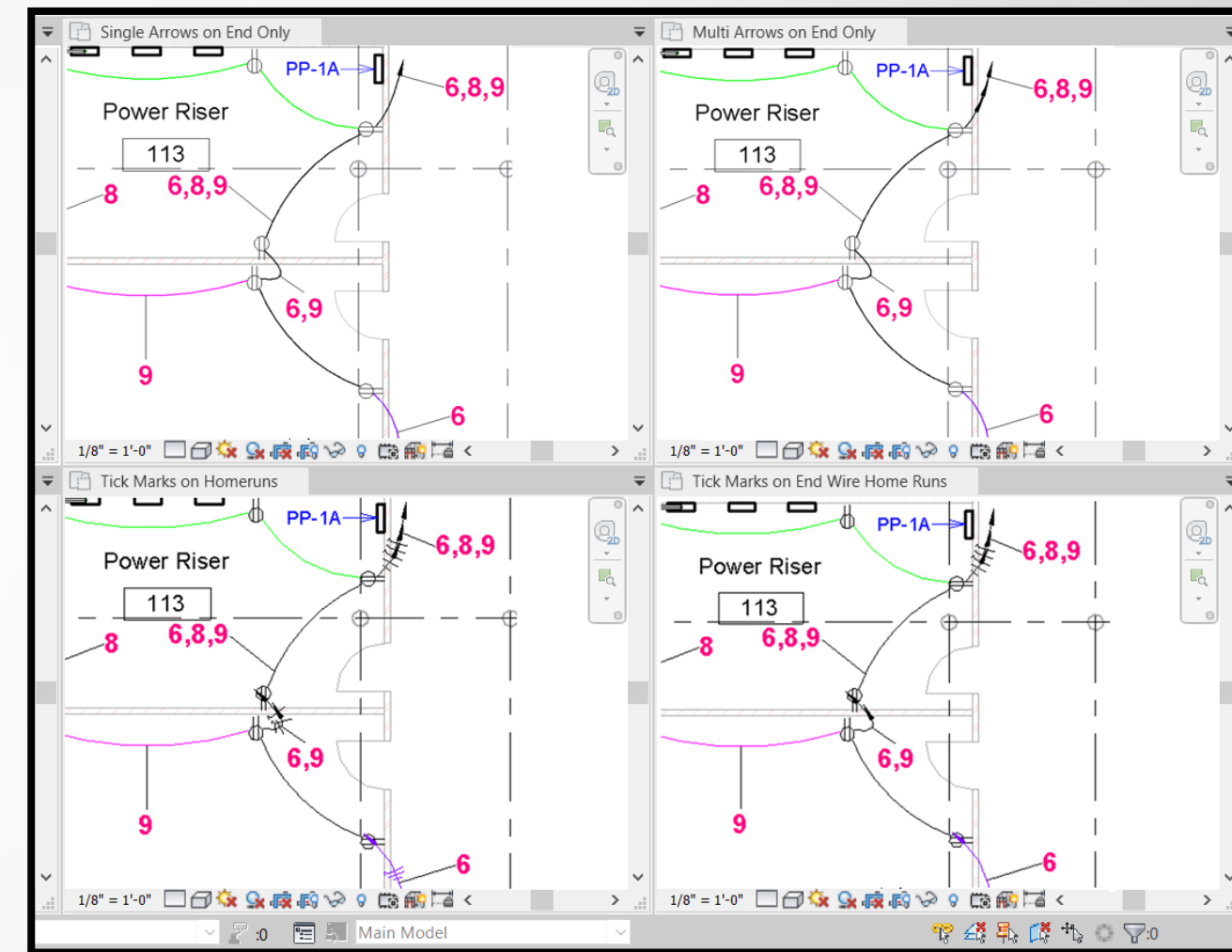
Create more accurate documentation for detailed steel elements

Create

Autodesk Revit 2020

Electrical Homerun Wiring Improvements

- User definable homerun arrow style
- Multi-circuit homerun arrow control
- Additional option for wiring tick-marks



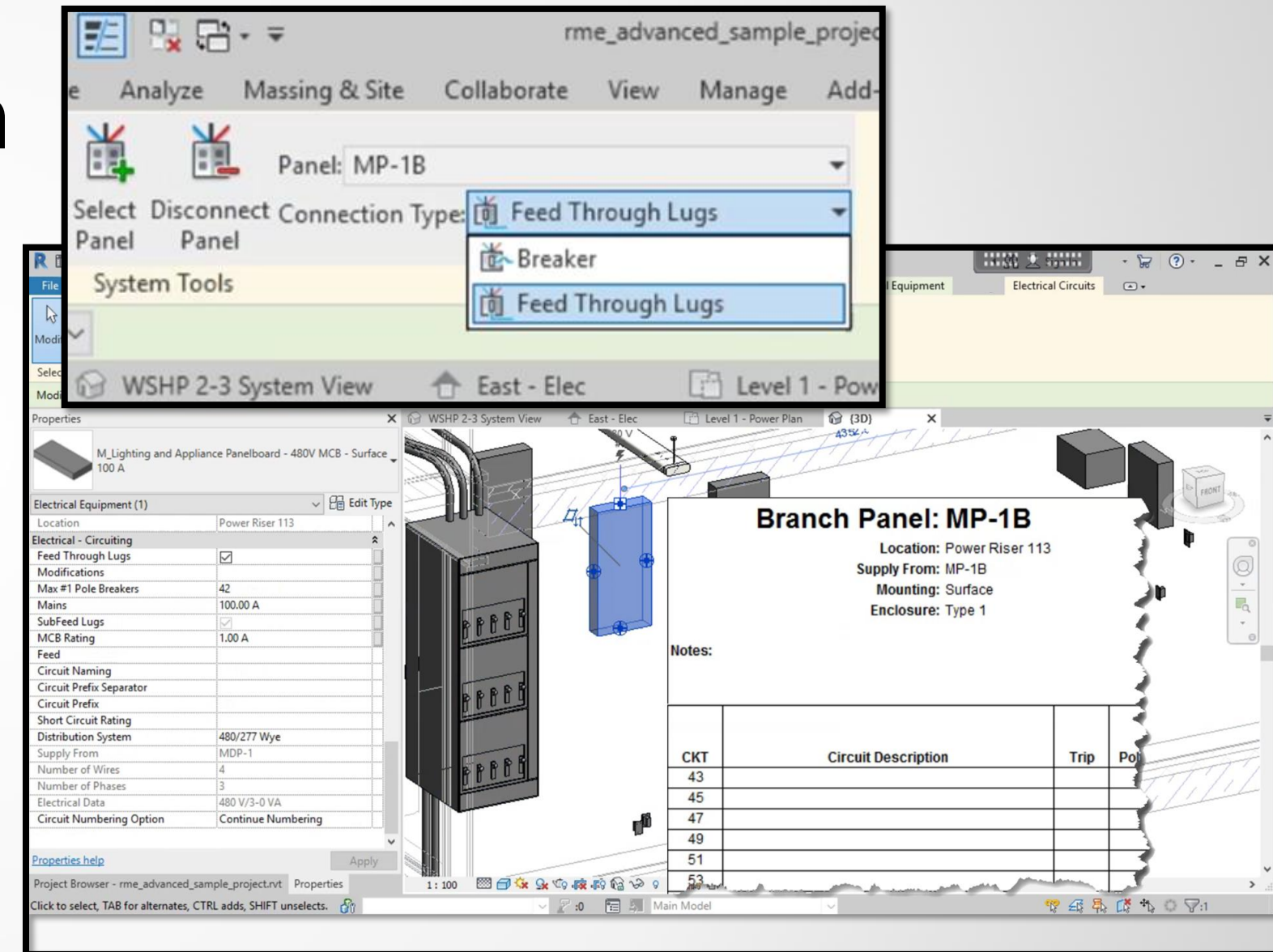
Greater control over homerun wiring displays and tick mark visibility

Create

Autodesk Revit 2020

Electrical Panel Feeds Through Lug Connection

- Verify load calculation results
- Test a panel's circuit numbering with both Breaker and Feed Through Lugs.
- Modify existing panel schedule templates



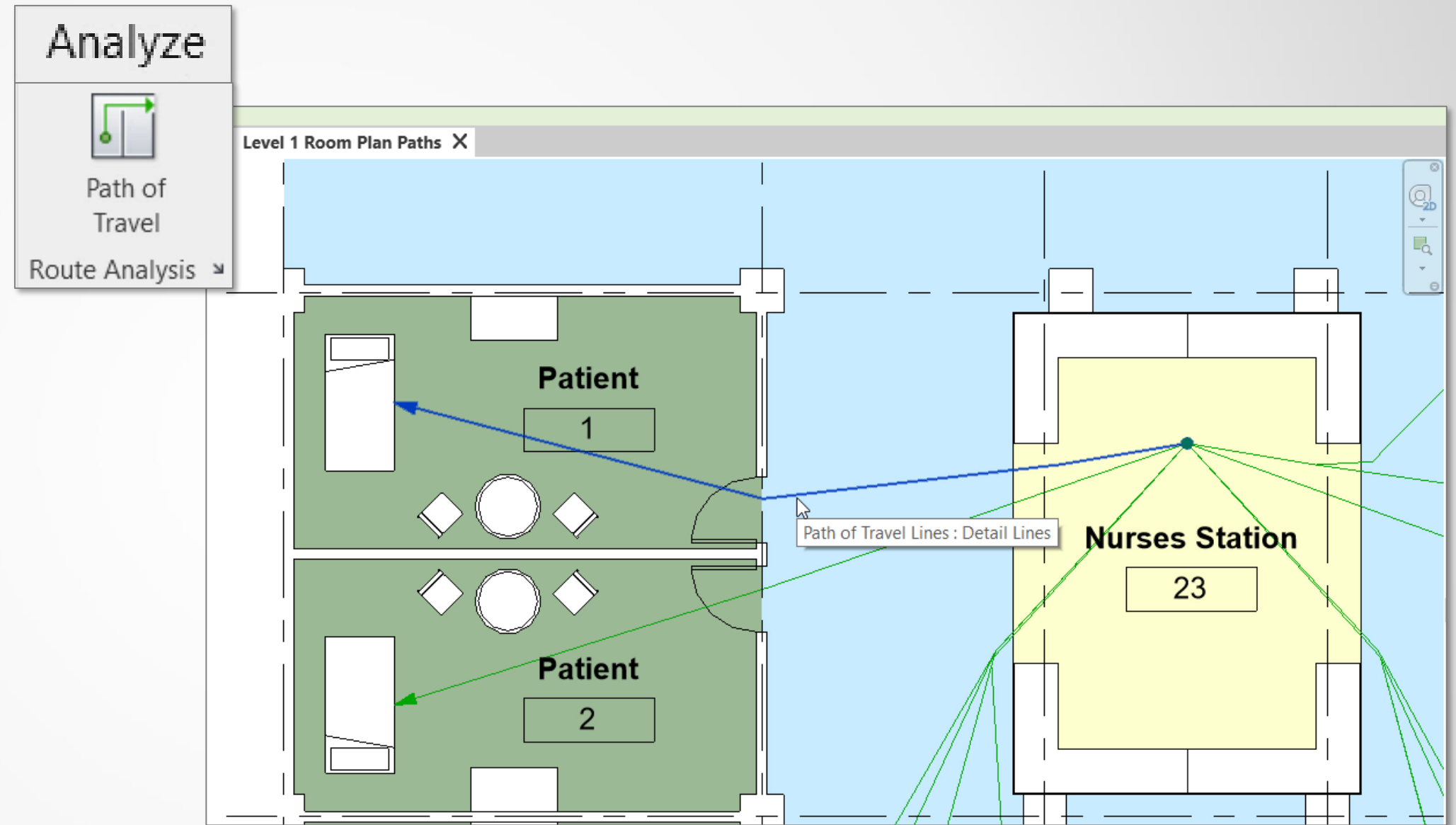
Connect equipment to lugs for new load reporting abilities on panel schedules

Optimize

Autodesk Revit 2020

Path of Travel

- Automates path between two points
- Creates a Revit path element
- Understands obstacles
- Schedule and tag



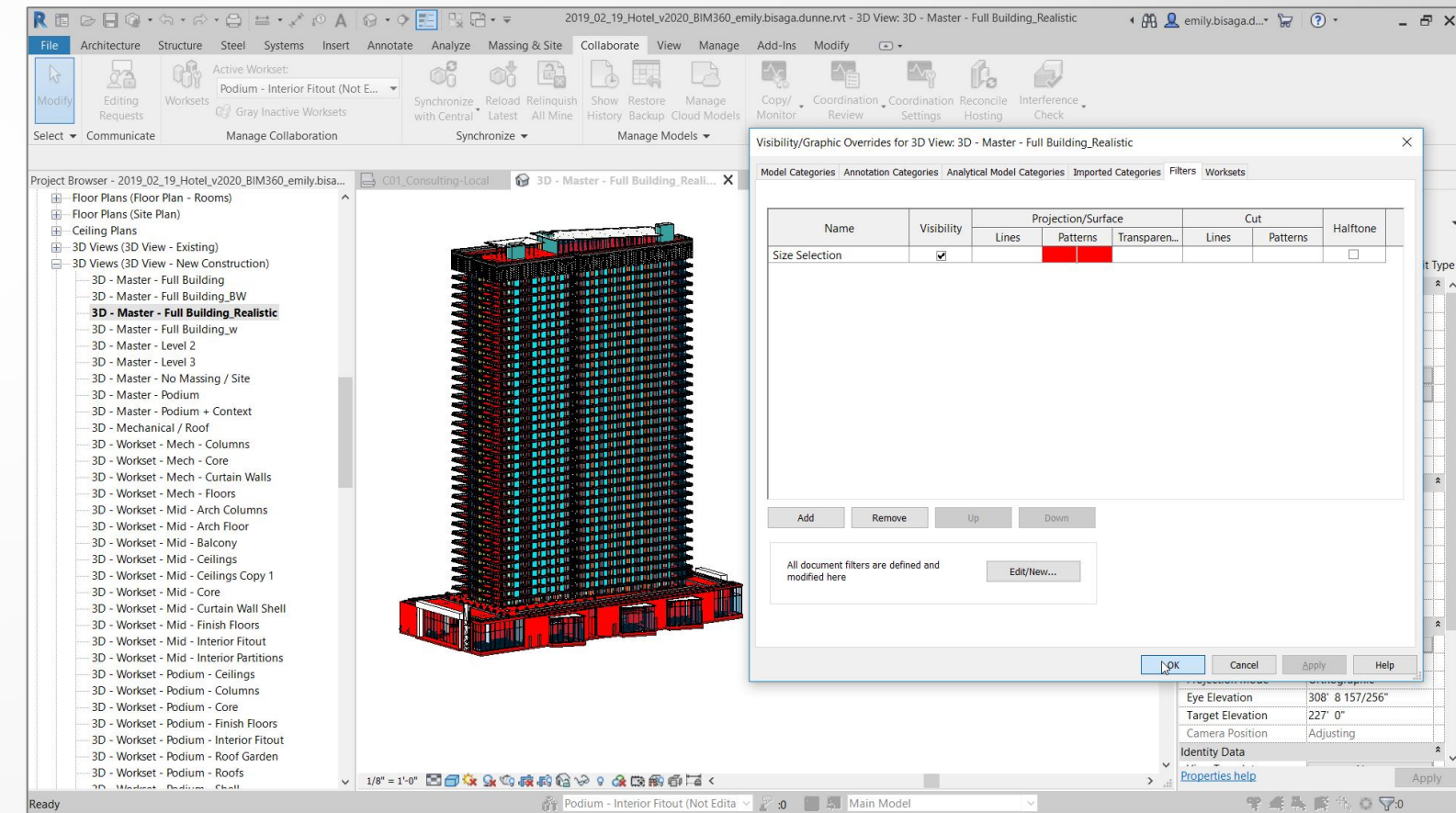
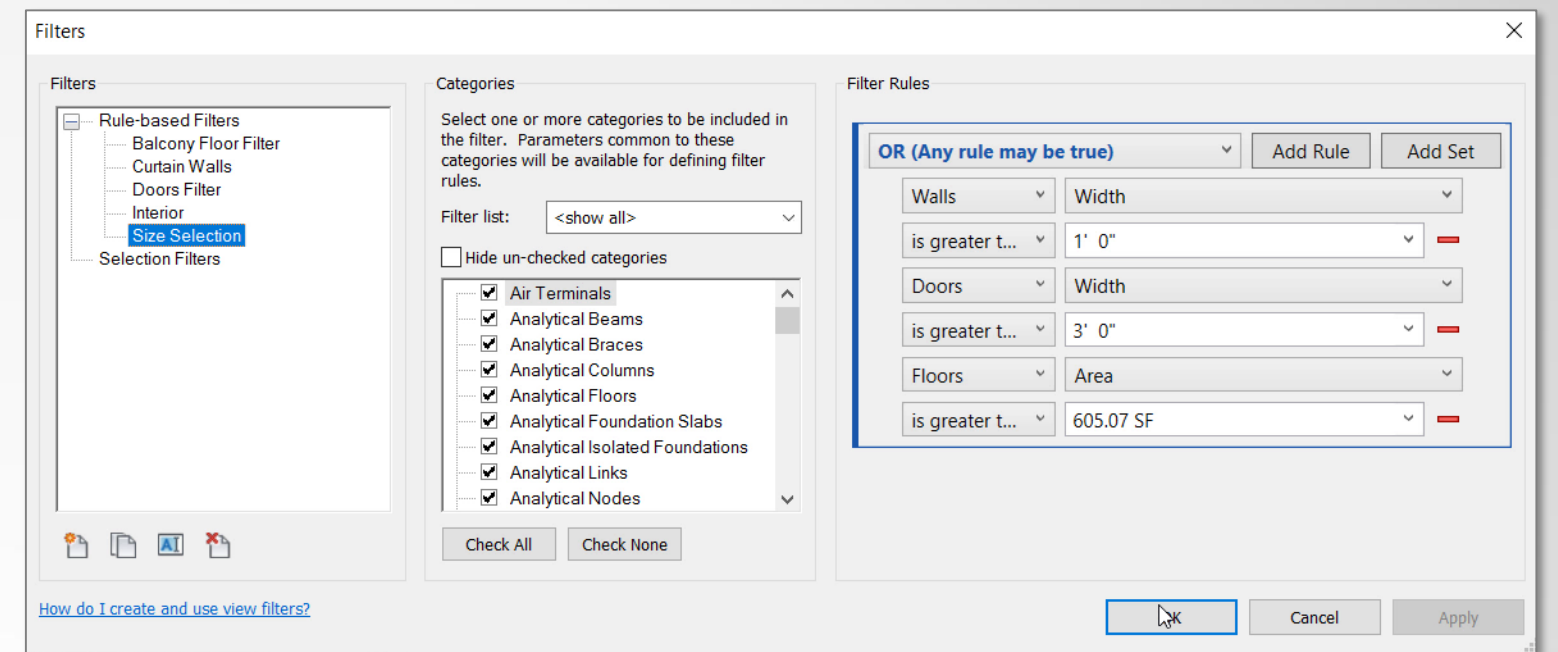
Design check tool to help understand navigation of occupants

Optimize

Autodesk Revit 2020

Improved OR in View Filters

- Available for OR filters only
- Shows inclusive list of parameters for just that category
- Extends parameters available for use



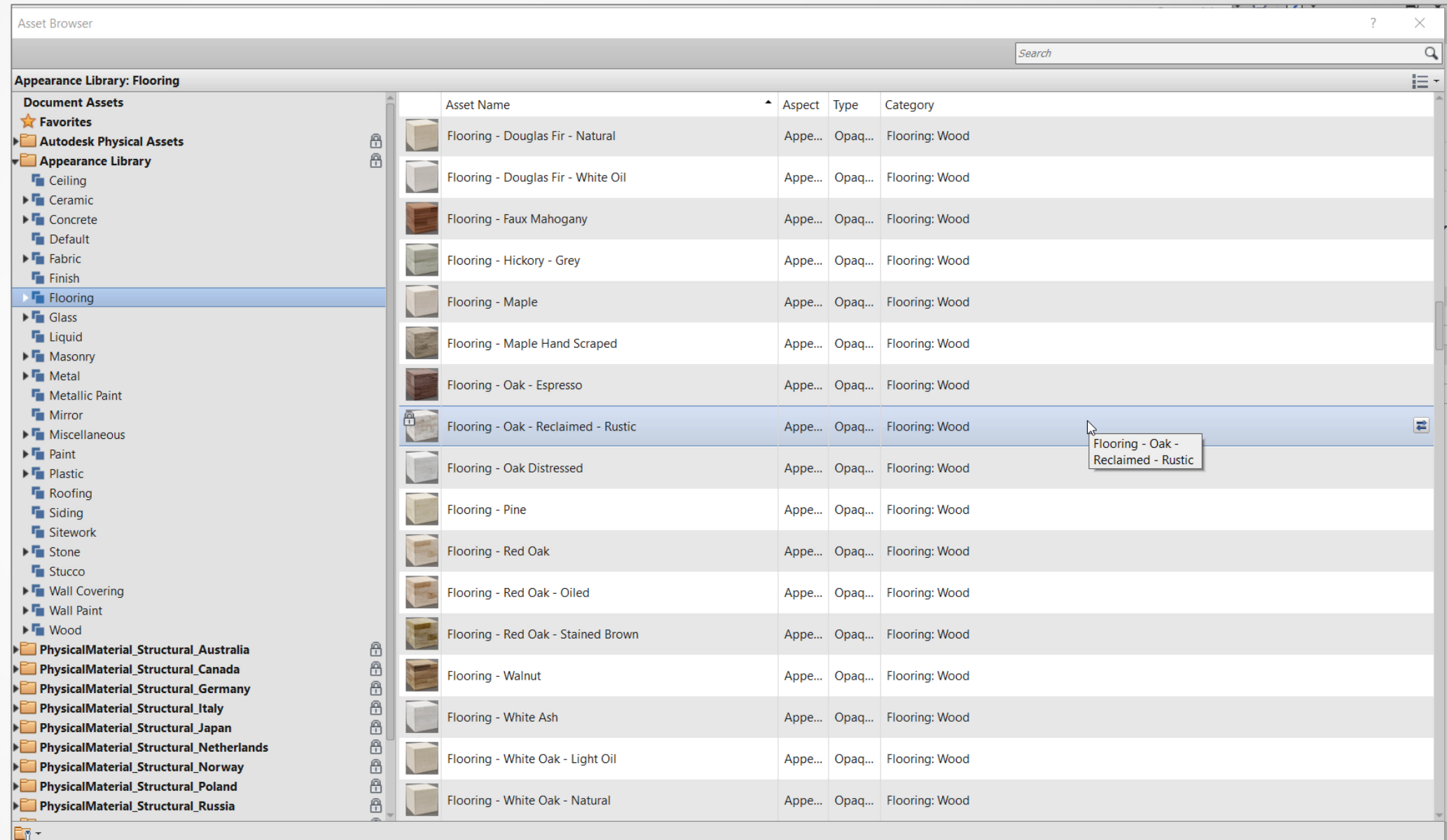
Allows for the creation of advanced filter sets

Optimize

Autodesk Revit 2020

Material Appearance Improvement

- High quality
- Optimized
- Realistic



Extend your material appearance capabilities

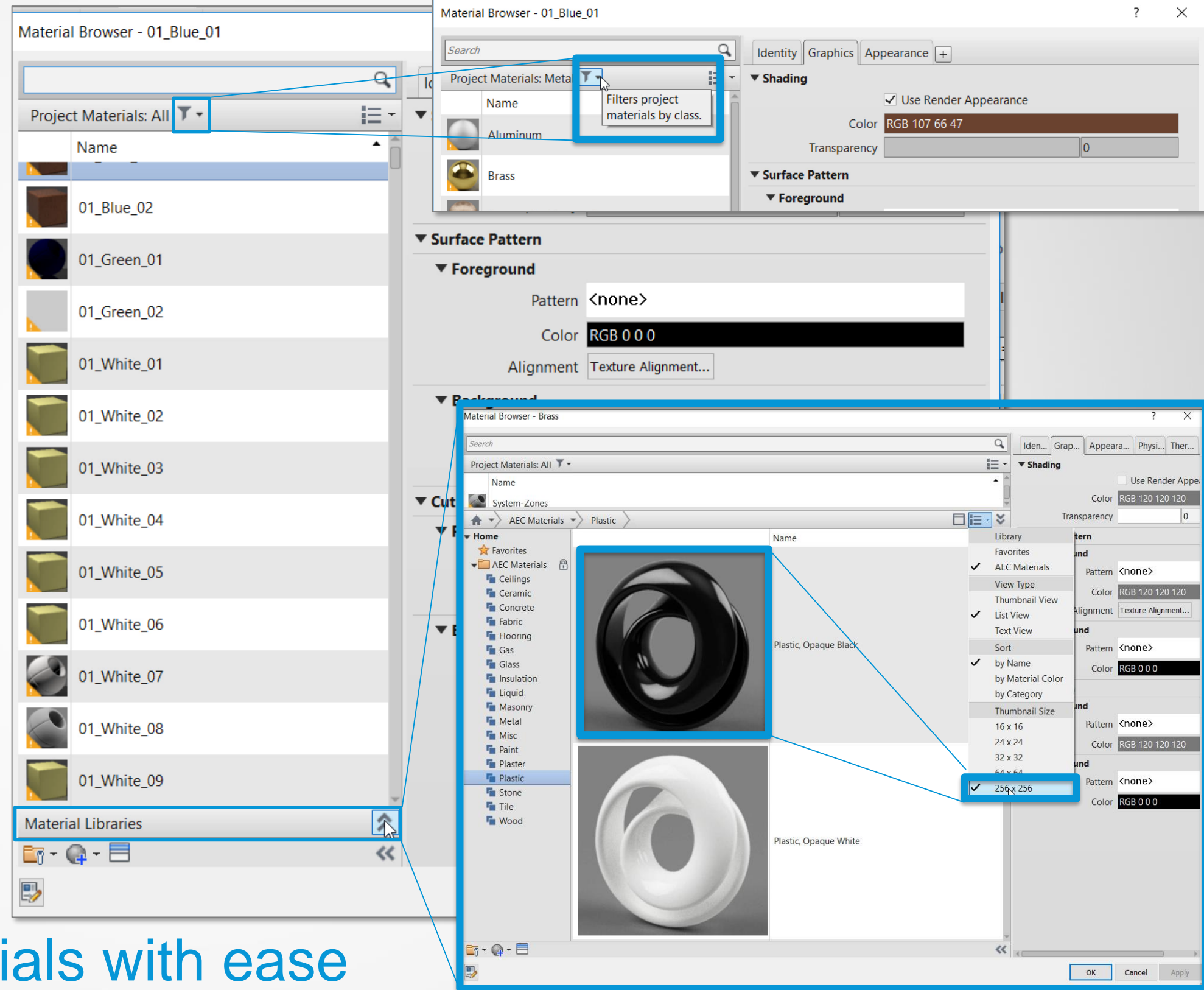
Optimize

Autodesk Revit 2020

Material User Interface Improvements

- Easier access to libraries
- New filter by class
- New larger thumbnail

Access, filter and view materials with ease



Optimize

Autodesk Revit 2020

Image and PDF Improvements

- Better image info reporting
- BIM 360 paths enabled
- Modify scale parameters

Advanced image support

The screenshot displays the Revit 2020 interface with several windows open. The 'Manage Images' window is at the top right, showing a table of raster images:

Raster Image	Name	Count	Path	Path Type
	CeilingDetailPhoto.jpg	3	C:\Users\dunnee\Desktop\Datasets\Hotel\Images\CeilingDetailPhoto.jpg	Absolute
	LobbyFinalBeautiful.jpg	1	C:\Users\dunnee\Desktop\Datasets\Hotel\Renderings\LobbyFinalBeautiful.jpg	Absolute
	Seaport2 (2).jpg	1	C:\Users\dunnee\Desktop\OneDrive\autodesk\TechnicalMarketing - Documents\01_Data-Sets\2018_12_07_Hotel_Emily\Seaport2 (2).jpg	Absolute

A tooltip for the 'Seaport2 (2).jpg' image shows the following details:

- Width (pixels): 1094
- Height (pixels): 1500
- Resolution (dpi): 72
- Width: 15.19"
- Height: 20.83"
- Page Number: 1

The 'Drafting 1' window shows a 3D rendering of a modern interior ceiling with a grid of rectangular panels and recessed lighting. The 'Properties' window is open over the image, showing the following settings:

- Raster image: CeilingDetailPhoto.jpg
- Raster Images (1) Edit Type
- Dimensions:
 - Width: 28' 0"
 - Height: 15' 9"
 - Horizontal Scale: 6.000000
 - Vertical Scale: 6.000000
- Lock Proportions:
- Identity Data:
 - Workset: View "Drafting Vi..."
 - Edited by:
- Other:
 - Draw Layer: Background

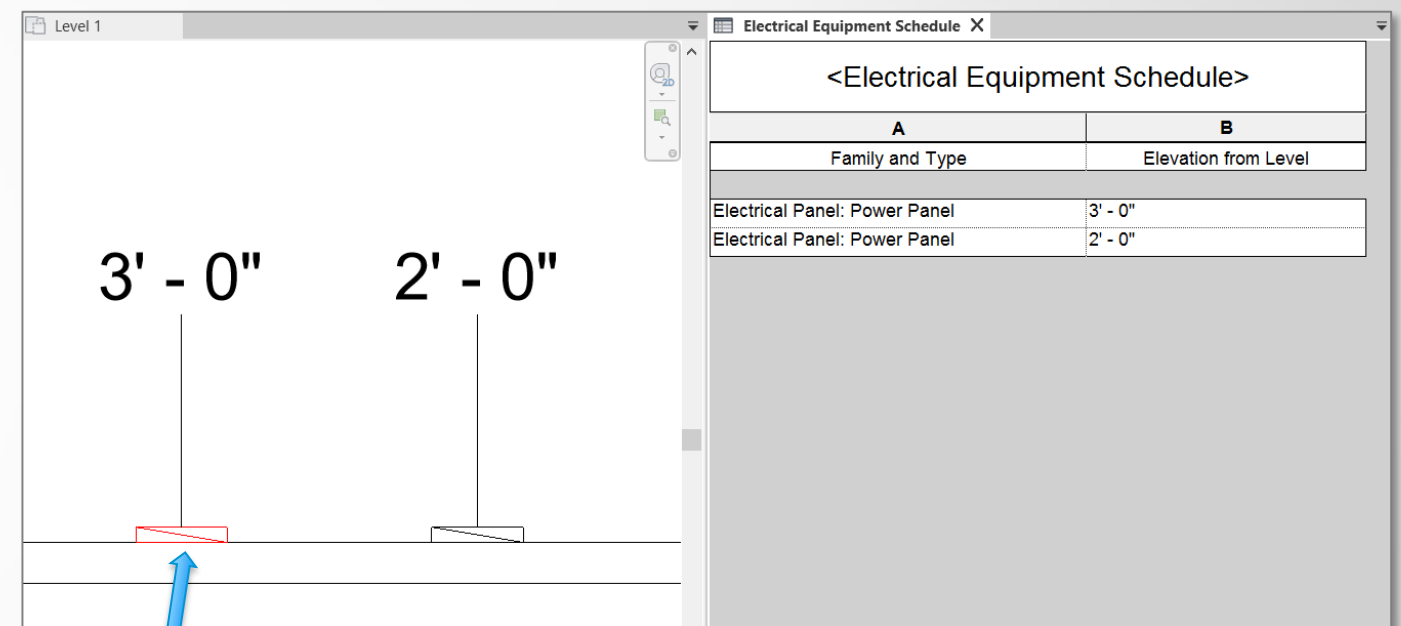
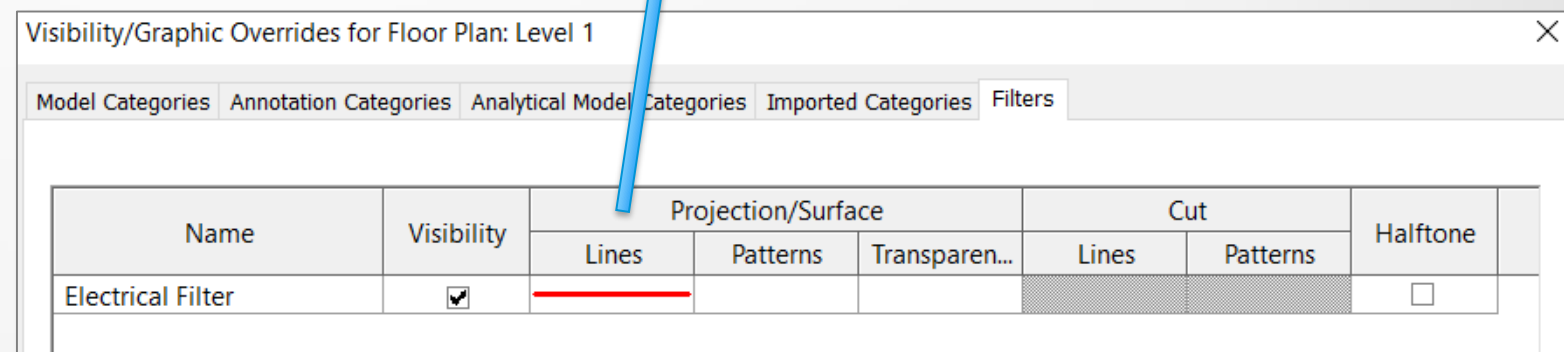
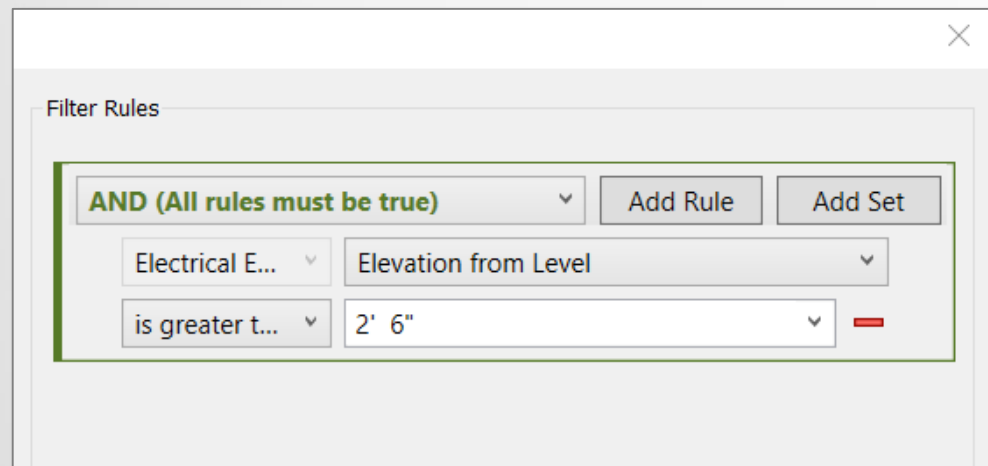
Buttons for 'Reload From...', 'Place Instance', 'Reload', 'OK', and 'Cancel' are visible at the bottom of the Properties window.

Optimize

Autodesk Revit 2020

Tag, Schedule and View Filter for Elevation

- Tag elevations of elements
- Use elevations in view filters
- Schedule elevation values



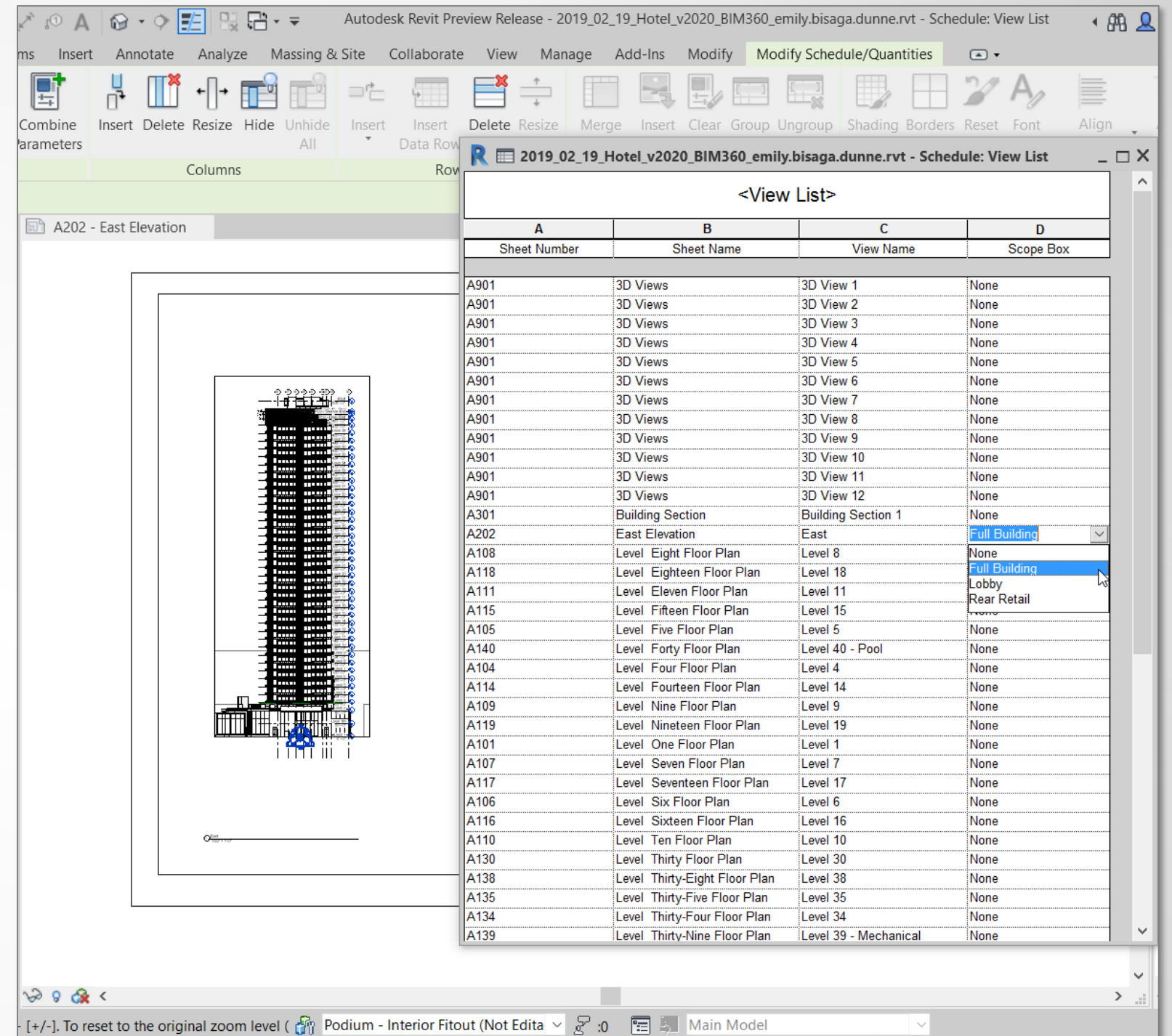
Smart coordination

Optimize

Autodesk Revit 2020

Track and Edit Scope Box Parameter in View List

- Easy to apply scope box to view from the view list
- Coordinates crop regions across views



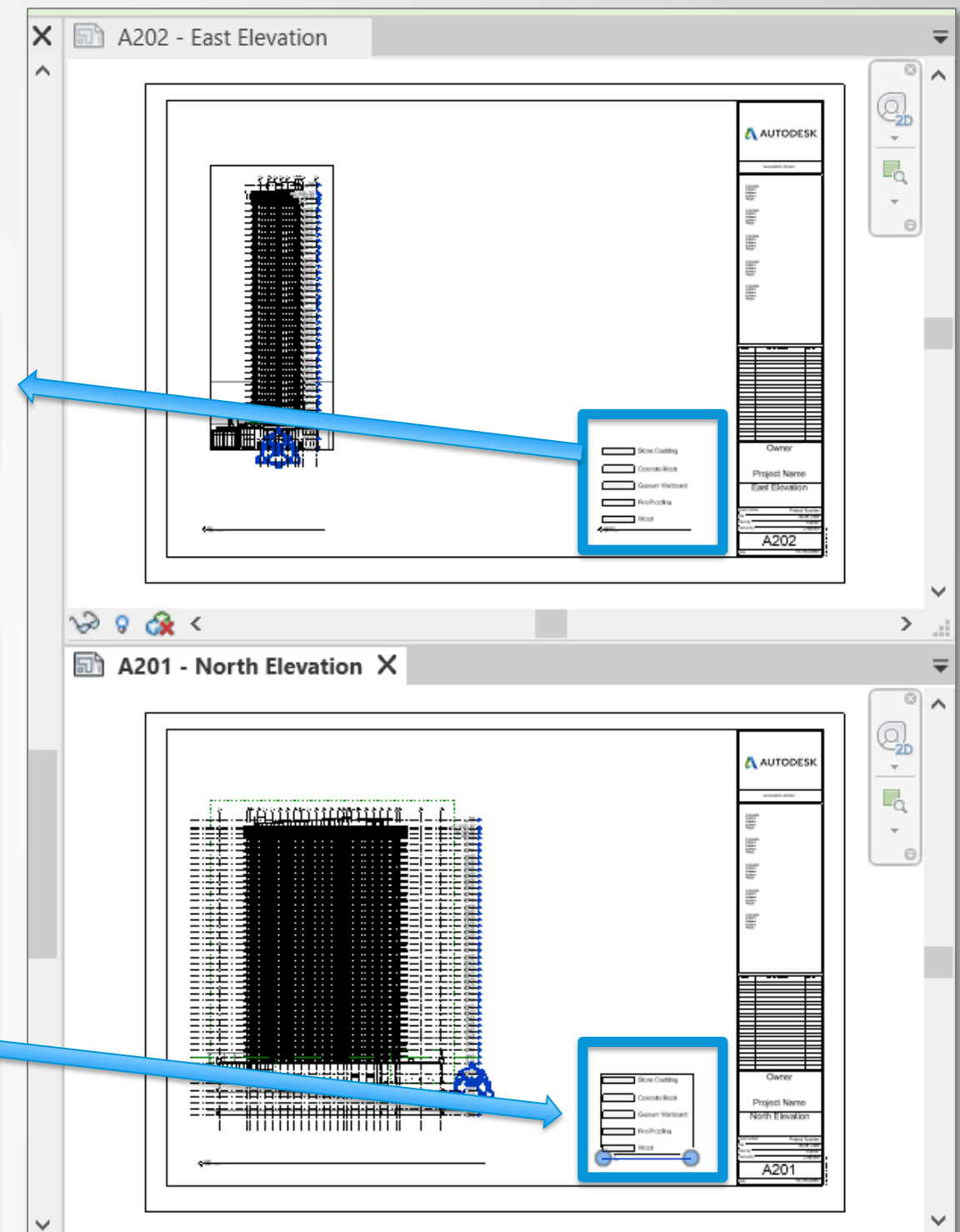
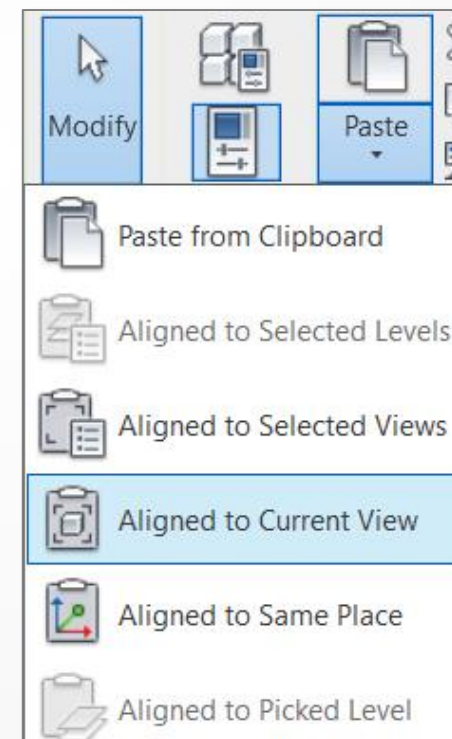
Create consistency between views in your project

Optimize

Autodesk Revit 2020

Copy and Paste Legends Across Sheets

- Now copy and paste legends
- Dialogue is resizable
- Place on multiple sheets
- Place aligned to same place



Create consistency between views in your project

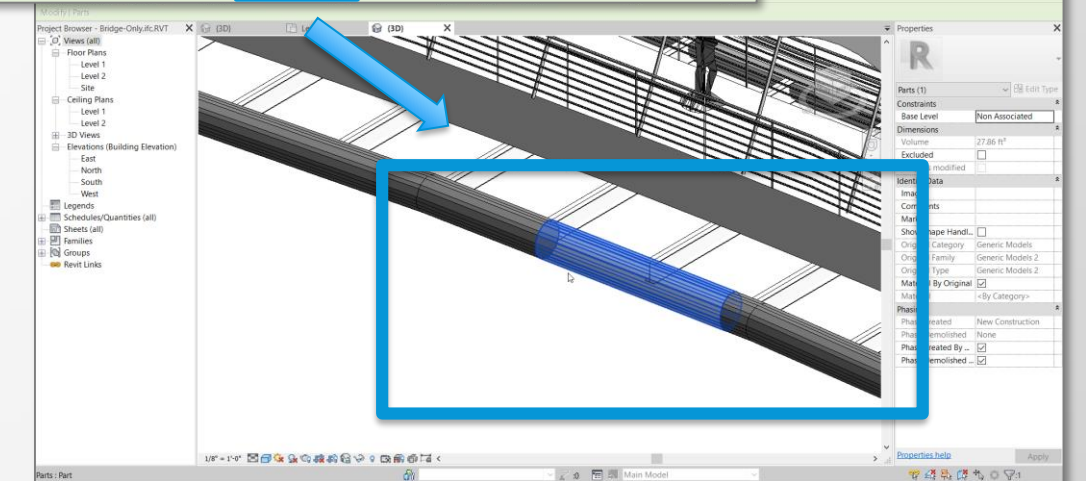
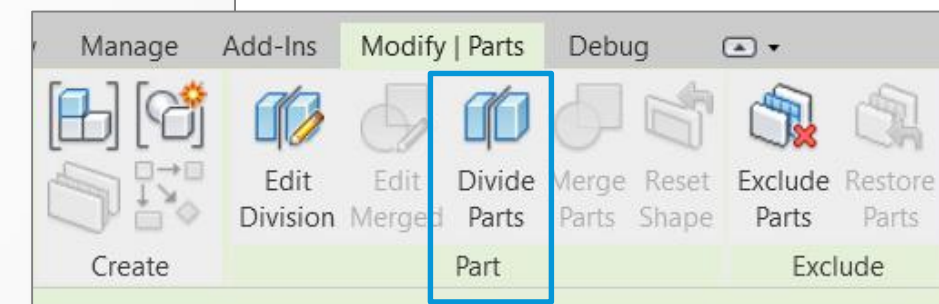
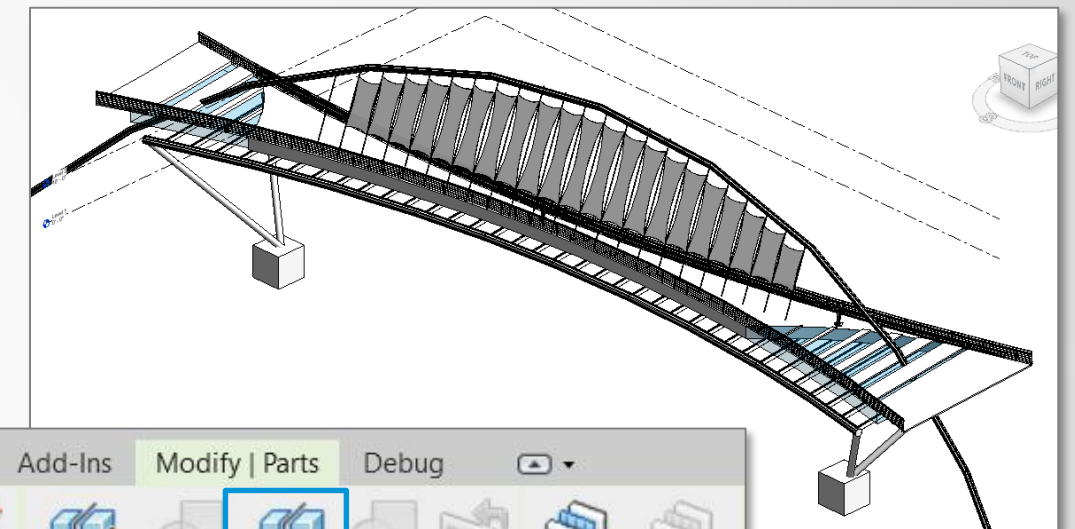
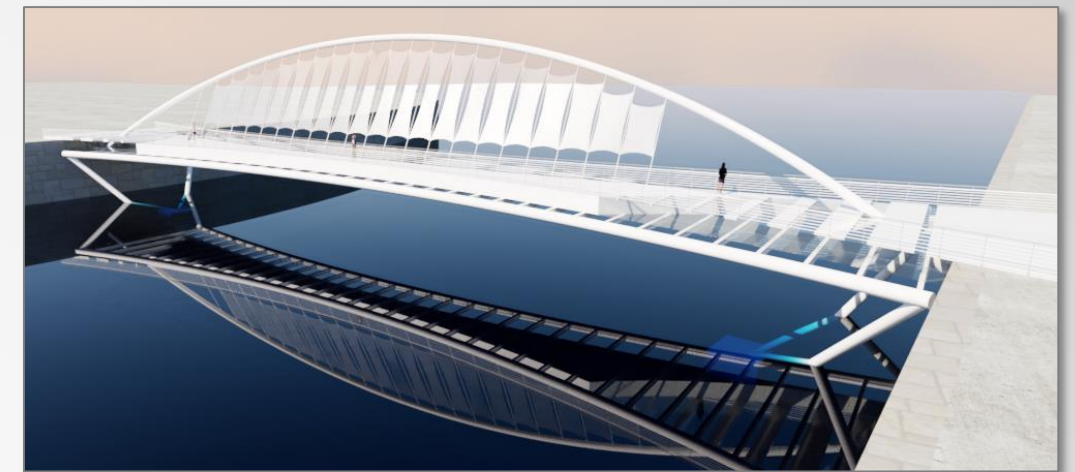
Optimize

Autodesk Revit 2020

Create Parts from Imported Geometry

- Parts for imports from Infracore or any DirectShape (IFC)
- Split and cut parts for construction
- Great for bridge workflow
- Revit> Link IFC> creates .rvt file with imported geometry for parts

Quickly parse data for construction workflows

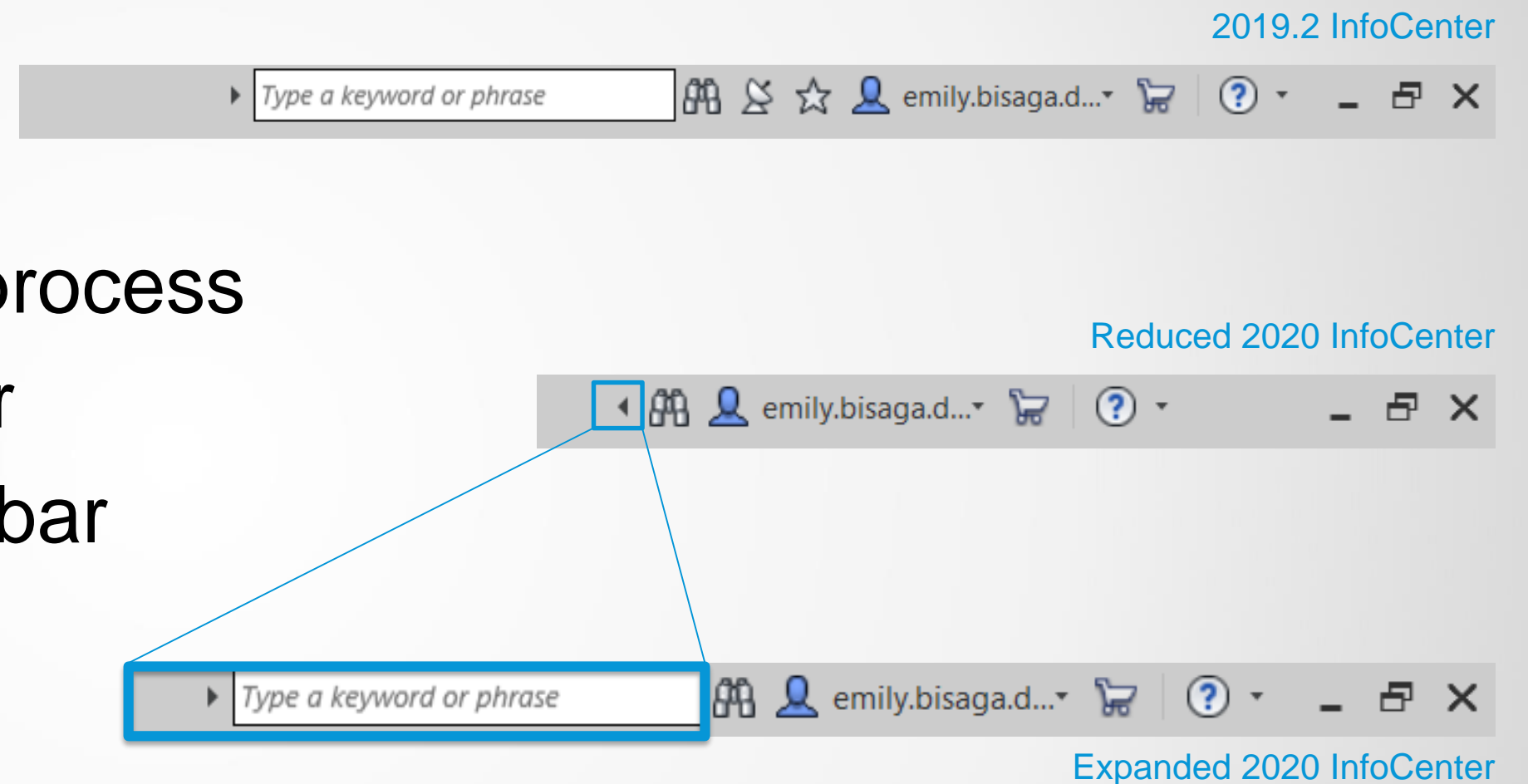


Optimize

Autodesk Revit 2020

InfoCenter Reduction

- Removed WSCmmcntr process
- Collapsed the search bar
- Increased space on title bar



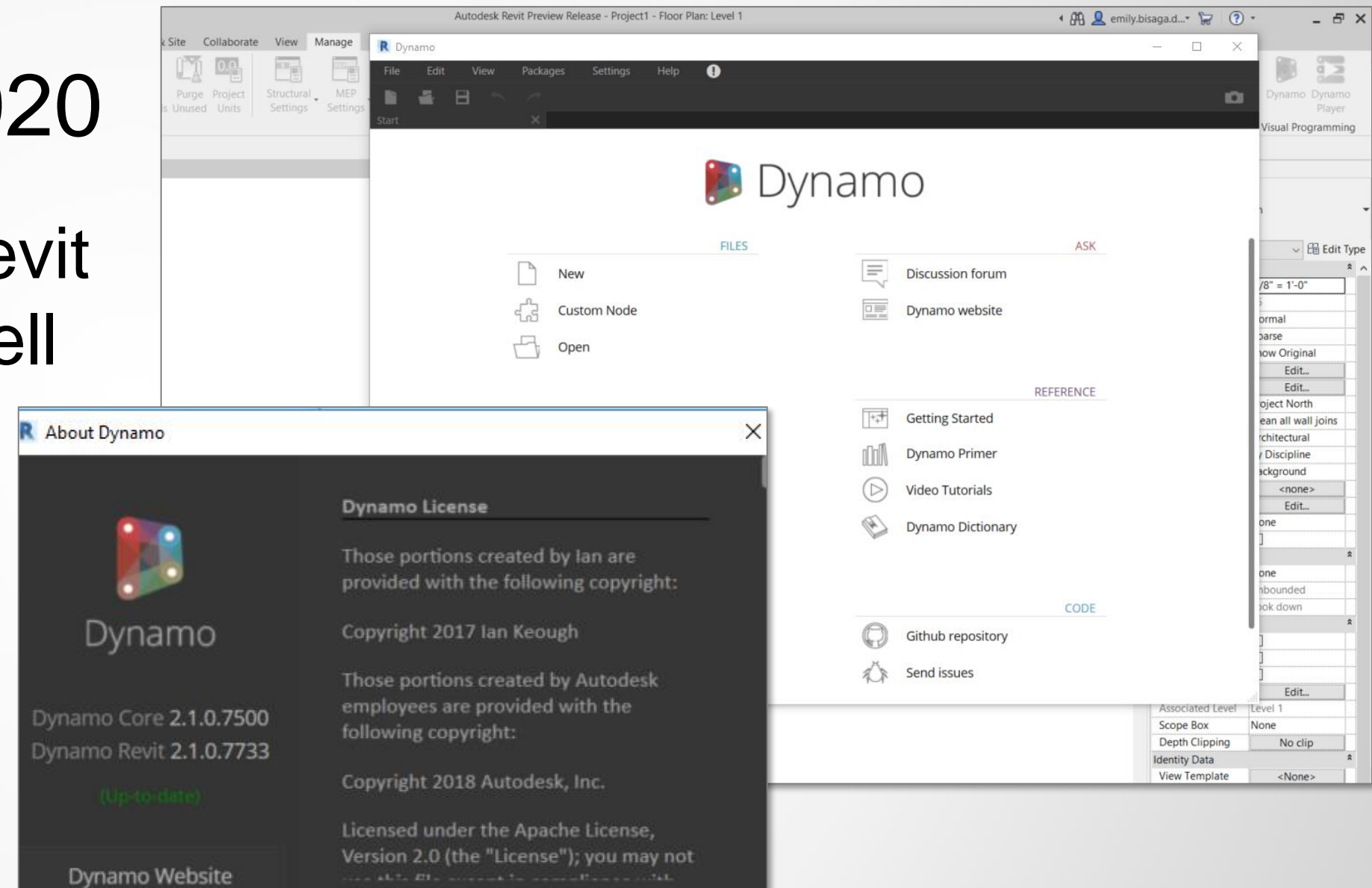
Process project info more clearly at a glance

Optimize

Autodesk Revit 2020

Dynamo 2.1 Ships with 2020

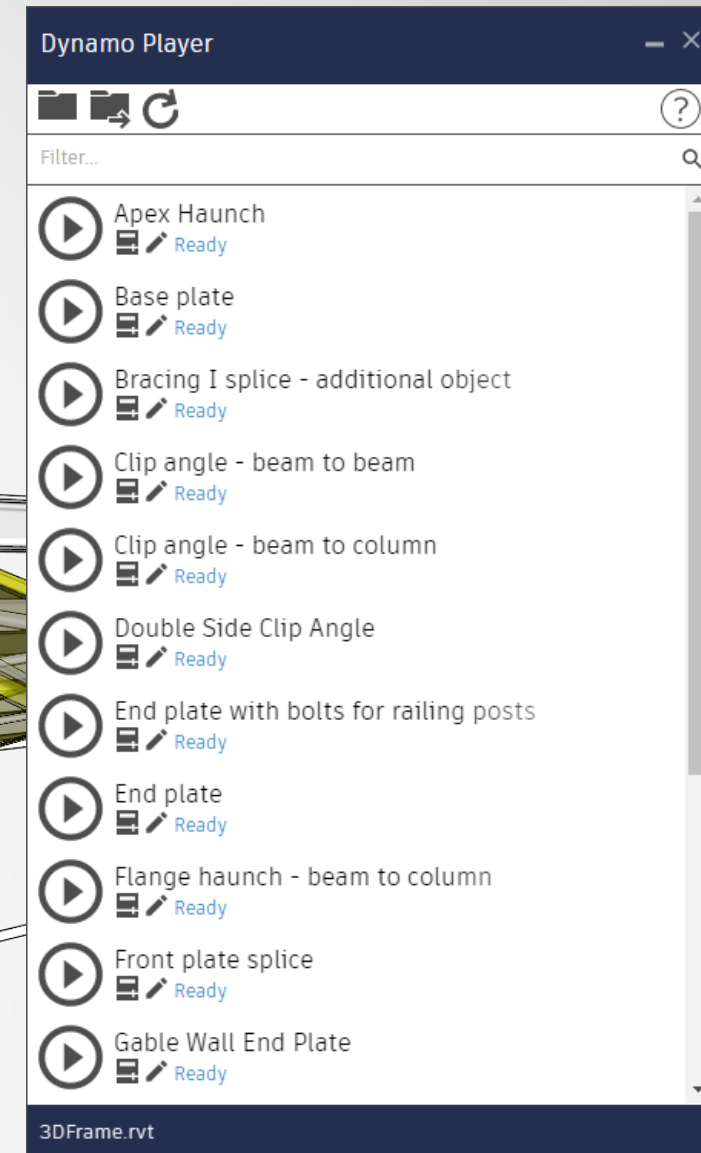
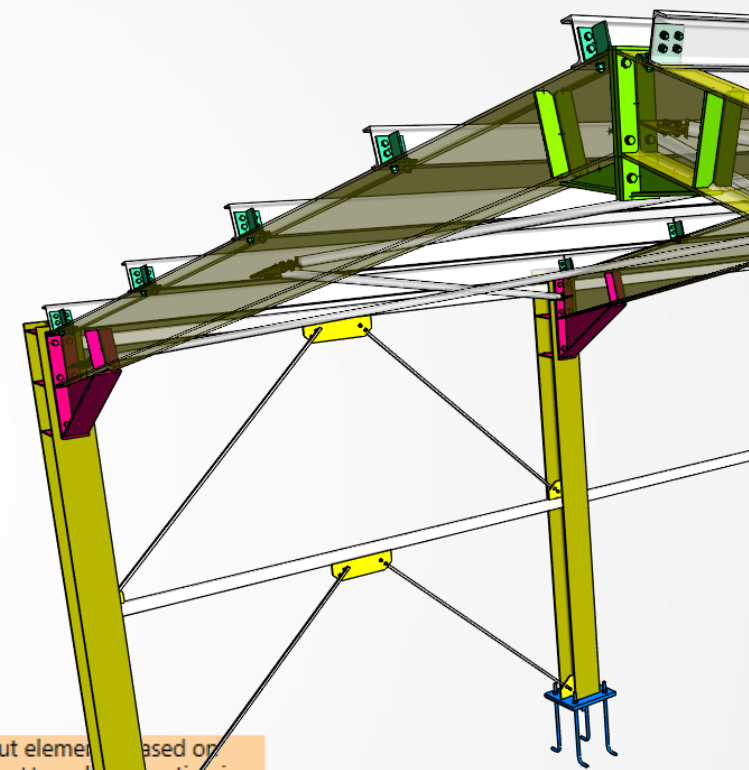
- Every time you update Revit Dynamo will update as well
- Does not impact other Dynamo installations



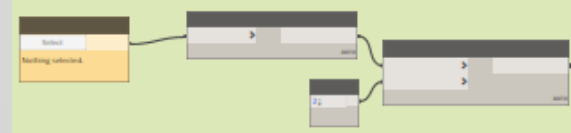
Streamline Dynamo installation coordination for your team

Steel Connections for Dynamo

- New Dynamo nodes to model steel connections
- Out-of-the box scripts ready to be run in Dynamo Player



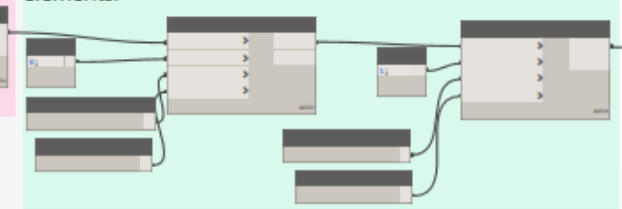
Select input elements, structure into connection nodes and take sub nodes of 2 elements.



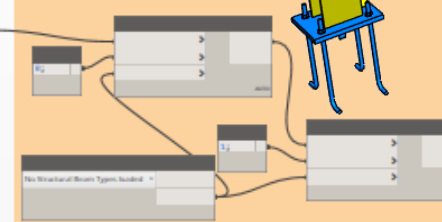
Define the zones for which the elements are joining to each other to create a connection.



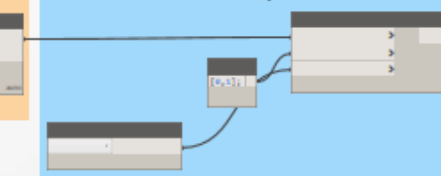
Filter the input elements based on slant angle of the elements using a range from 0 to 90 degrees for both input elements.



Filter accepted input elements based on Section Name. Apex Haunch connection is supported only when both input elements have same Section Name.



Creates Apex Haunch connection taking indexes as order for input elements.



Display number of created connections per run.



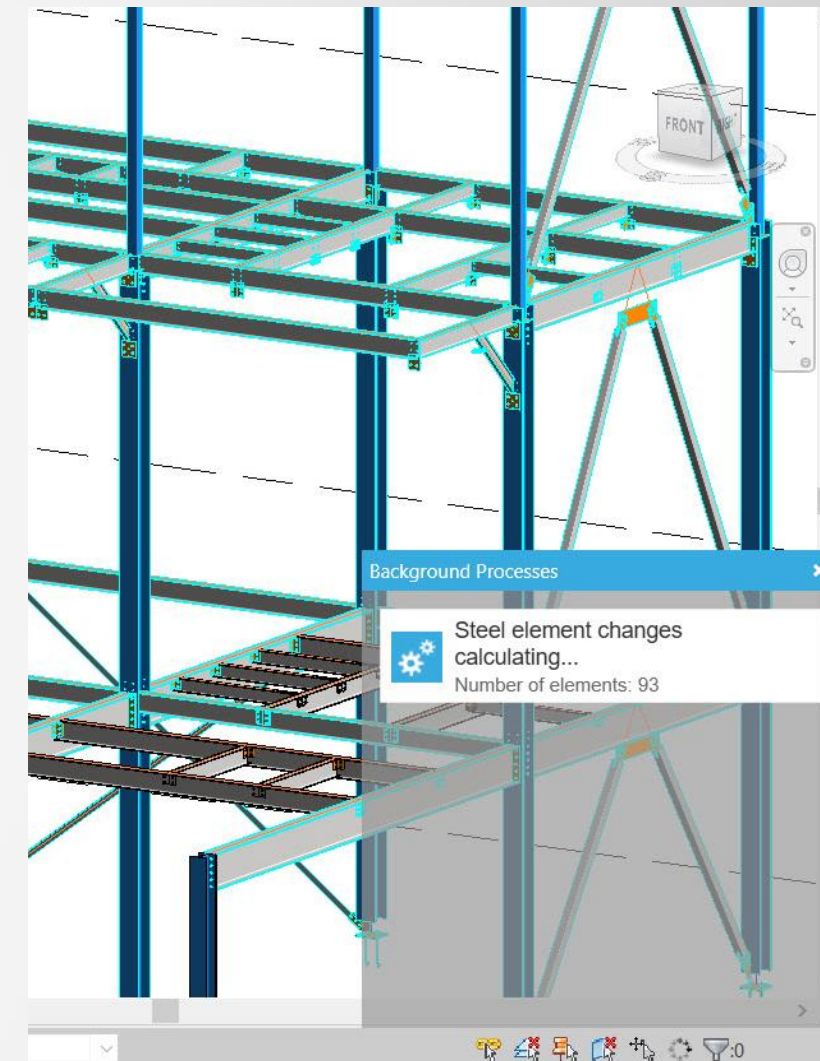
Enhanced productivity by automating modeling of steel connections

Optimize

Autodesk Revit 2020

Enhanced Performance for Detailed Steel Models

- Background process for steel connections
- Faster response time
- Allow to perform other actions at the same time
- Involved elements highlighted in color
- Status visible in background processes window



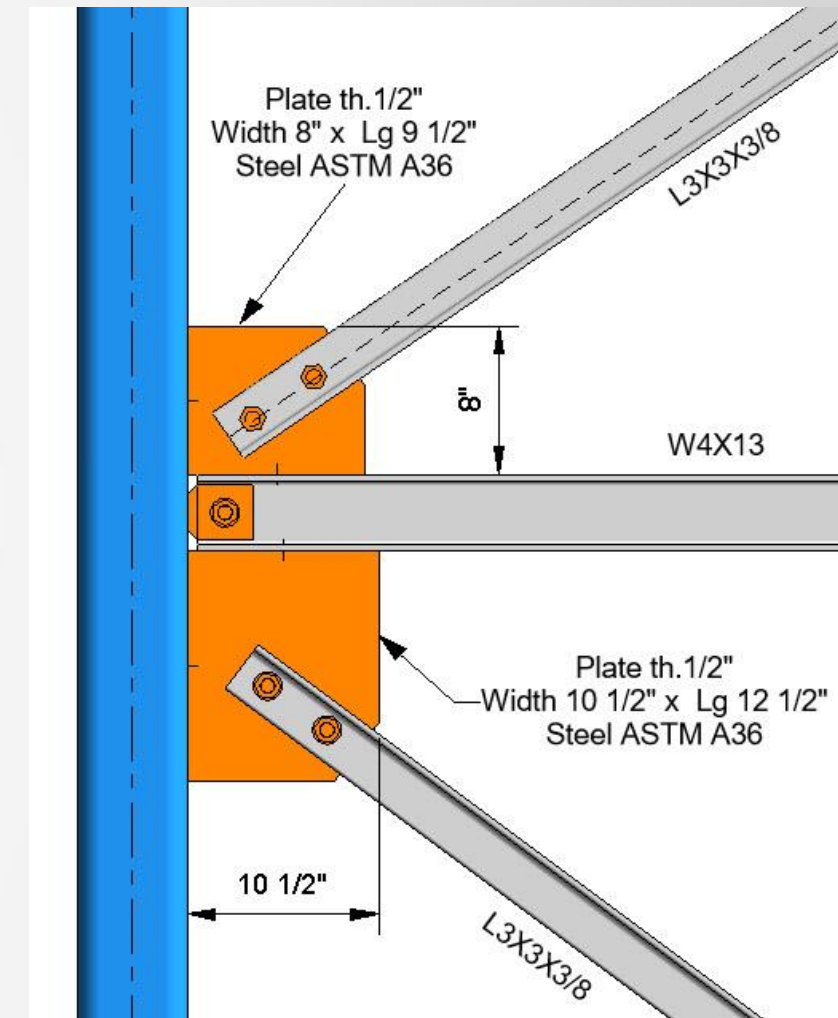
Get a faster response time for performance intensive steel engineering tasks

Optimize

Autodesk Revit 2020

Additional Parameters for Steel Components

- More parameters at hand
 - e.g. plate width & length
- Capture more information from the BIM model
- Enhanced collaboration with fabricators
 - More detailed tags
 - Schedules with more information



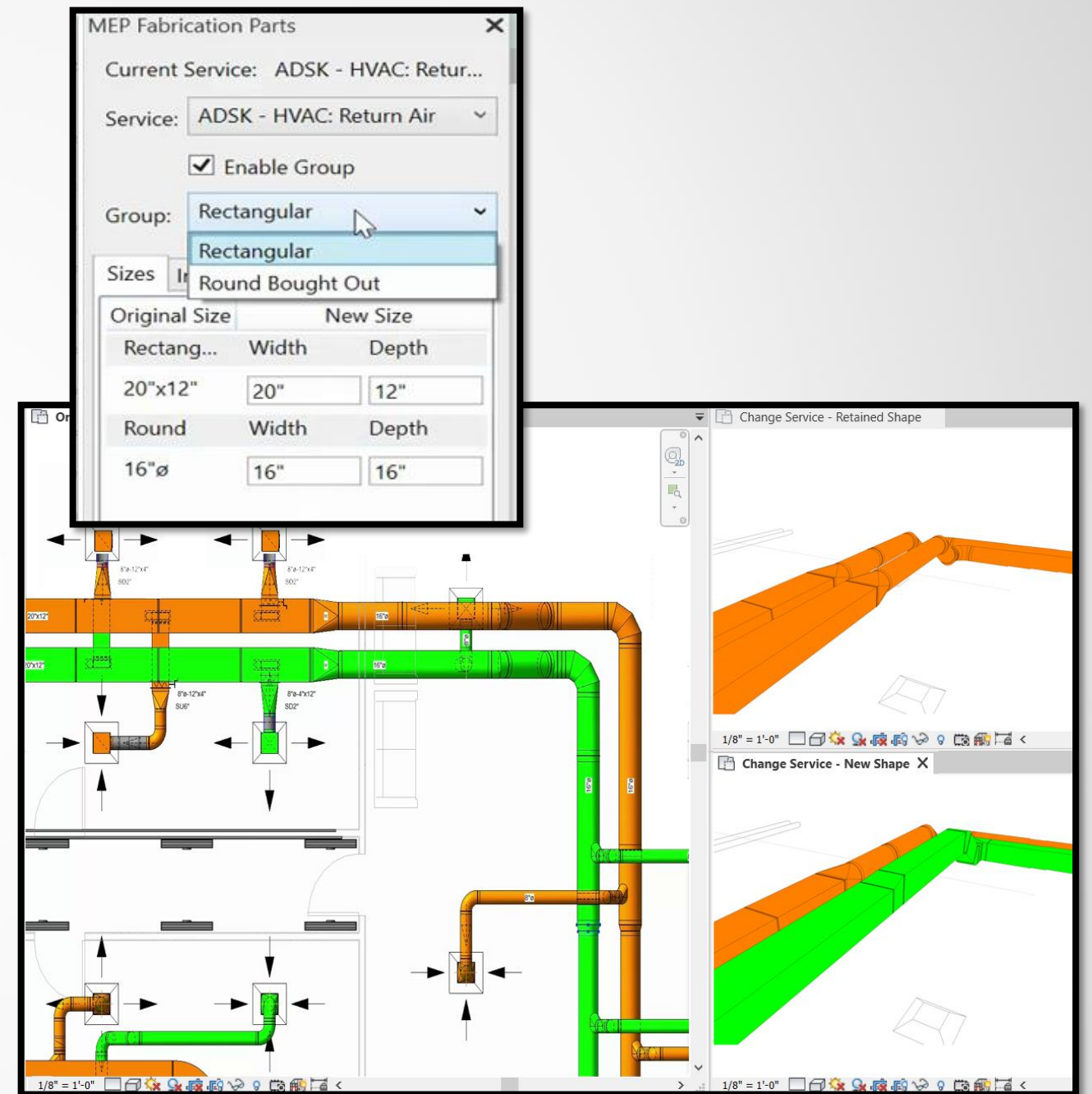
Create more accurate documentation for components of steel connections

Optimize

Autodesk Revit 2020

Change Service Improvement

- Maintain or retain duct shapes
- Maintain size restrictions of pipework when swapping multiple pipe types
- Group filters include couplings, adapters, and equipment



Easily change or retain duct shapes with the Change Service functionality.