

# Keep pace with network change. So your team can sleep at night.

Network as a Service from Aruba,  
an HPE GreenLake service



As device counts grow, endpoints diversify, and connectivity demands increase, planning your network and keeping up with change can be overwhelming. You need the flexibility of cloud agility, security, scale, and compliance — but how can you get it?

## What's the cost of network status quo? IT distraction and business disruption.



**70%**

of IT's time is spent trying to diagnose and fix issues<sup>1</sup>



**57%**

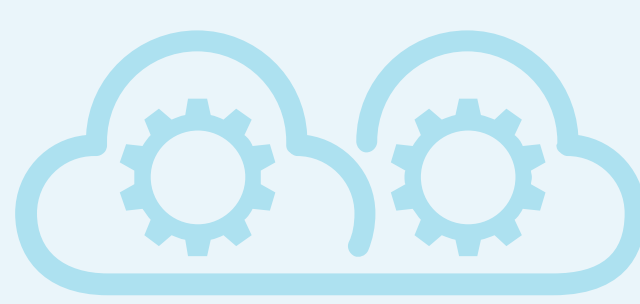
believe their company's current networking infrastructure prevents them from addressing the innovative use cases they would like to target<sup>2</sup>

## Network as-a-Service Brings Flexibility to the Edge



**Let us do the heavy lifting for you.  
Get your network delivered your way.  
With expert guidance, automation & efficiency.**

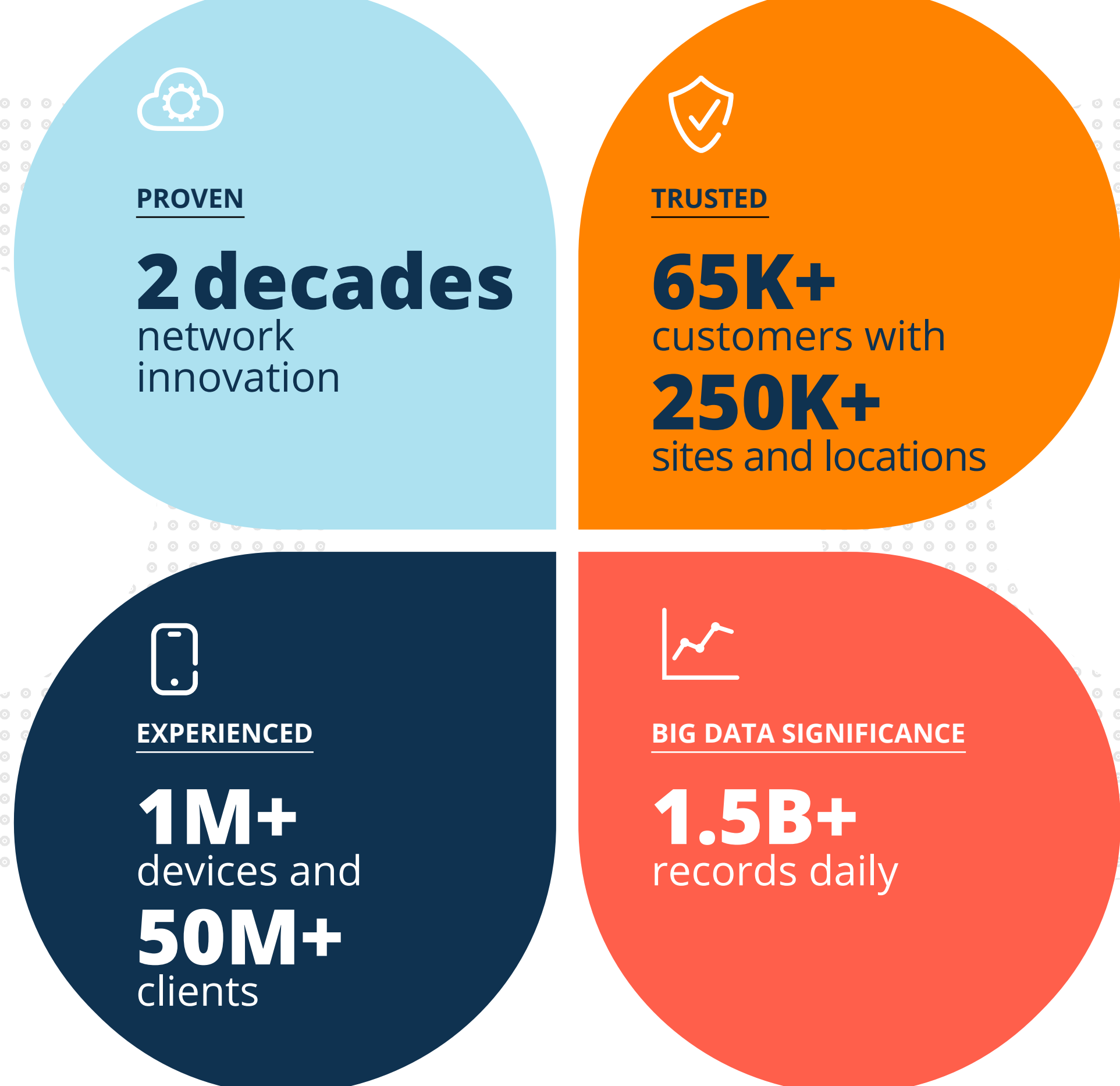
Bring cloud flexibility to your Aruba network today, and for the journey ahead. Gain the benefit of proactive and preemptive service management built on Aruba ESP and AIOps. Focus attention when it's needed most — before problems occur.



Streamline operations. Let our team manage day-to-day tasks for you. Respond to business demands that require big thinking in network applications and services.

## Put Your Trust in Us

The combination of HPE, Aruba, and our partner expertise is proven and powerful — and enables your innovation at the edge.



Based on expertise gained from monitoring millions of network devices, you get significant service insights from our installed base, with AIOps and service data analytics.

**HPE GreenLake + Aruba's proven edge innovation and leadership = Your current and future network success**



Bring cloud flexibility to your Aruba network with HPE GreenLake services.

**[arubanetworks.com/NaaS](https://arubanetworks.com/NaaS)**

