

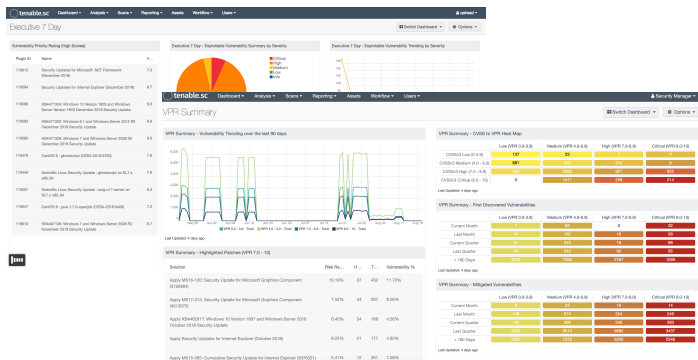
*The Tenable.sc™ platform provides the most comprehensive and integrated view of enterprise security posture so you can accurately identify, investigate and prioritize vulnerabilities.*

## VULNERABILITY MANAGEMENT MANAGED ON-PREM

Tenable.sc is a vulnerability management solution that provides visibility into your attack surface so you can manage and measure your cyber risk. Tenable.sc does this through advanced analytics, customizable dashboards/reports and workflows to identify weaknesses on your network connected assets, by identifying all vulnerabilities, misconfigurations and malware on them.

Built on leading Nessus technology, Tenable.sc gathers and evaluates vulnerability data across multiple Nessus® scanners distributed across your enterprise and illustrates vulnerability trends over time to assess risk and prioritize vulnerabilities. Finally, Tenable.sc includes a configurable workflow engine that helps your security team speed up response and remediation, to reduce overall risk and streamline compliance.

Tenable.sc includes Predictive Prioritization, which combines data and threat intelligence across multiple sources, and analyzes them all with a data science algorithm that uses machine learning to anticipate the probability of a vulnerability being leveraged by threat actors. You get real-time insight to help you prioritizing patching and understand which vulnerabilities to remediate first.



*Tenable.sc provides highly customizable vulnerability analytics, trending, reporting and workflows to suit the needs of your security program*

## KEY BENEFITS

- Identify weaknesses by scanning network connected assets for known vulnerabilities, misconfigurations and malware
- Prioritize vulnerabilities with the greatest impact and understand the likelihood a given vulnerability will be exploited in the next 28 days
- Focus on what matters most by quickly identifying what patches to prioritize for the biggest risk reduction.
- Rapidly respond to changes with configurable alerts, notifications and automated actions
- Streamline compliance for the widest range of regulatory/IT standards and best practices

## TENABLE RESEARCH

Tenable.sc is back by Tenable Research, delivering world-class Cyber Exposure intelligence, data science insights, alerts and security advisories. Frequent updates from Tenable Research ensure the latest vulnerability checks, zero-day research, and configuration benchmarks are immediately available to help you secure your organization.

## KEY FEATURES

- **Vulnerability Priority Rating:** combines threat intelligence and machine learning to determine the likelihood a vulnerability will be exploited in your unique environment.
- **Highly customizable dashboards/reports:** HTML-5 based user interface satisfies the specific needs of CISOs, security management, analysts and practitioners/operators.
- **Broad asset coverage:** assess servers, endpoints, network devices, operating systems, databases and applications in physical, virtual and cloud infrastructures.
- **Solutions view page:** new view that provides insight into what vulnerabilities to remediate first for the greatest risk reduction.
- **Dynamic asset classification:** group assets based on policies that meet specific criteria: e.g., Windows 7 assets with vulnerabilities > 30 days old.
- **Vulnerability management:** multiple scanning options, including passive network monitoring, non-credentialed and credentialed scanning for deep analysis and configuration auditing.

- **Integration with Lumin:** Calculate and manage cyber risk across your organization, and see how you stack up against the competition.
- **Agent-based scanning:** available for organizations to more easily scan mobile and hard to reach assets.
- **Assurance Report Cards:** continuously measure the effectiveness of customer-defined security policies to identify and close potential gaps.
- **Managed security posture:** scan hosts, virtual, mobile and security devices for vulnerabilities, misconfigurations and malware using customizable schedules and black-out windows.
- **Cumulative scan results:** consolidate data from multiple on premises Nessus scanners and provide remediation trending information.
- **Incident Response/Workflows:** configurable workflows and alerts for administrators to take manual actions via emails, notifications, trouble tickets or take automated actions.
- **Tiered management model:** support for organizations that distribute responsibilities across multiple geographies and teams using role-based access control.

- **Streamlined compliance:** pre-defined checks for industry standards and regulatory mandates, such as CERT, DISA STIG, DHS CDM, FISMA, PCI DSS, HIPAA/HITECH and more.
- **Integrations:** use out-of-box integrations with patch management, mobile device management, threat intelligence and other third-party products, or use Tenable.sc APIs to develop custom integrations.

## TENABLE.SC EDITIONS

### Tenable.sc

Tenable.sc is a next-generation vulnerability analytics solution. Built on leading Nessus technology, you get a comprehensive view of your network so you can discover unknown assets and vulnerabilities, prioritize vulnerabilities and monitor network changes before they turn into a break.

### Tenable.sc Continuous View™

Tenable.sc Continuous View is a market-leading vulnerability management platform. It integrates Tenable.sc with multiple Nessus Network Monitor sensors and network traffic and event monitoring to provide comprehensive continuous monitoring.

Capabilities	Tenable.sc	Tenable.sc Continuous View
Centralized vulnerability management with multiple scanners	<input type="checkbox"/>	<input type="checkbox"/>
Dynamic asset classification (mail server, web server, etc.)	<input type="checkbox"/>	<input type="checkbox"/>
Policy-based configuration auditing	<input type="checkbox"/>	<input type="checkbox"/>
Malware detection with built-in threat Intelligence	<input type="checkbox"/>	<input type="checkbox"/>
Pre-defined dashboards/reports with automatic feeds from Tenable	<input type="checkbox"/>	<input type="checkbox"/>
Incident response with configurable alerts, notifications, ticketing	<input type="checkbox"/>	<input type="checkbox"/>
Assurance Report Cards (ARCs)	<input type="checkbox"/>	<input type="checkbox"/>
Vulnerability Priority Rating (VPR)	<input type="checkbox"/>	<input type="checkbox"/>
Solutions View page with clear insight into how to reduce risk	<input type="checkbox"/>	<input type="checkbox"/>
Integration with Tenable Lumin	<input type="checkbox"/>	<input type="checkbox"/>
Continuous asset discovery (virtual, mobile, cloud)		<input type="checkbox"/>
Passive vulnerability detection of new and “unsafe-to-scan” assets		<input type="checkbox"/>
Real-time detection of botnet and command & control traffic		<input type="checkbox"/>
Anomaly detection using statistical/behavioral techniques		<input type="checkbox"/>
Streamlined compliance with proactive alerts on violations		<input type="checkbox"/>

**For More Information:** Please visit [tenable.com](https://tenable.com) | **Contact Us:** Please email us at [sales@tenable.com](mailto:sales@tenable.com) or visit [tenable.com/contact](https://tenable.com/contact)