

NetApp HCI

10 GOOD REASONS



SIMPLIFY OPERATIONS

NetApp HCI works so easily and reliably that it hardly needs any expert knowledge or intervention from the business.

01



02

ACCELERATE AGILE DEVELOPMENT

NetApp's HCI is a Cloud Infrastructure enabling DevOps / lean operations and Analytics applications, making it a bridge builder between these worlds.

GUARANTEE PERFORMANCE

The unique Quality of Service (QoS) technology ensures that all applications are guaranteed to run without performance slumps. The end of the Noisy Neighbours!

03



04

CONSOLIDATE WORKLOADS

Our QoS uniquely enables you to run a wide variety of mixed workloads at higher densities with guaranteed performance levels.

FLASH FOR A GOOD REASON

NetApp HCI is the first native all flash solution. Combine this with the power of SolidFire and the result is many advanced features such as Self-healing, inline dedupe and simplified operations.

05

06

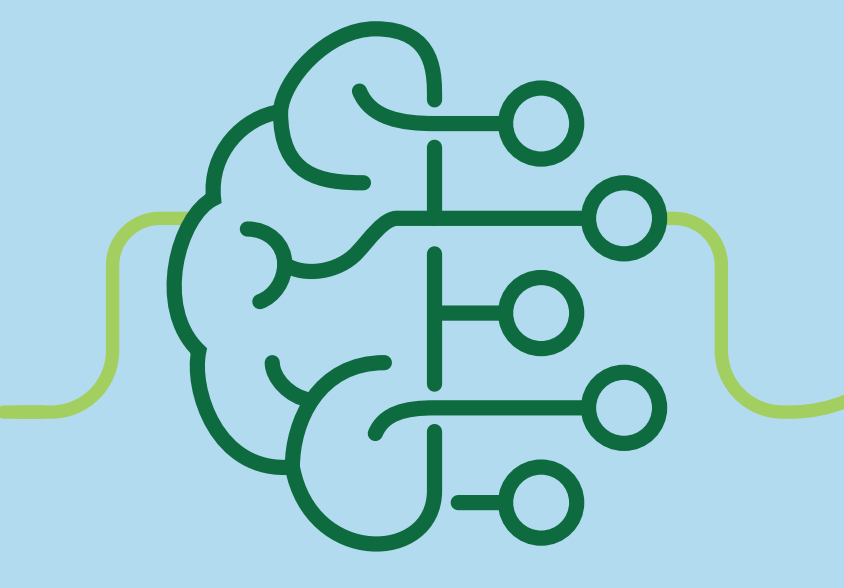
AUTOMATION LIKE NEVER BEFORE

Thanks to the native REST API, all tasks of the Application Lifecycle can be automated. Less mistakes, fewer recurring tasks, no more hassles for upgrades.

ONLY PAY FOR WHAT YOU NEED

NetApp HCI customers can grow compute and storage independently - gracefully and flexibly.

07



08

OPTIMIZE YOUR SOFTWARE INVESTMENT

NetApp HCI technology requires fewer CPUs in the server and thus fewer software licenses. We also ensure that no resources are stranded from applications or solutions that need them

MANAGE DIRECTLY FROM vCENTER

Thanks to deep integration, it is possible to selectively monitor and operate directly from vCenter, from NetApp's own GUI or from the existing infrastructure.

09



10

SMASH SILOS

NetApp HCI has full integration to our Data Fabric, delivering freedom for your data from the Edge to the Core to the Cloud.

