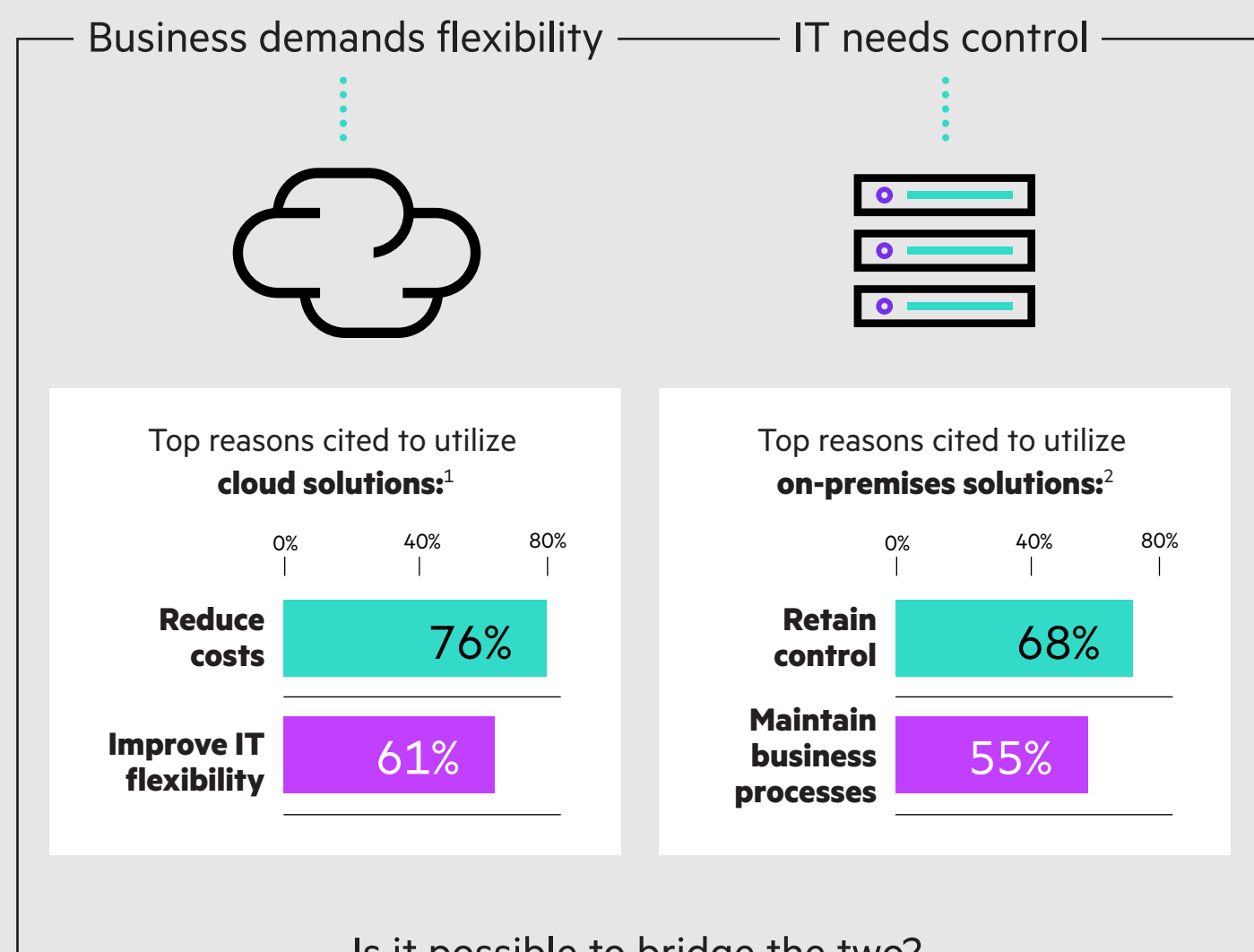


GAIN PUBLIC CLOUD ADVANTAGES WHILE RETAINING ON-PREMISES CONTROL

Balance IT flexibility, cost and control with accelerated outcomes on your terms



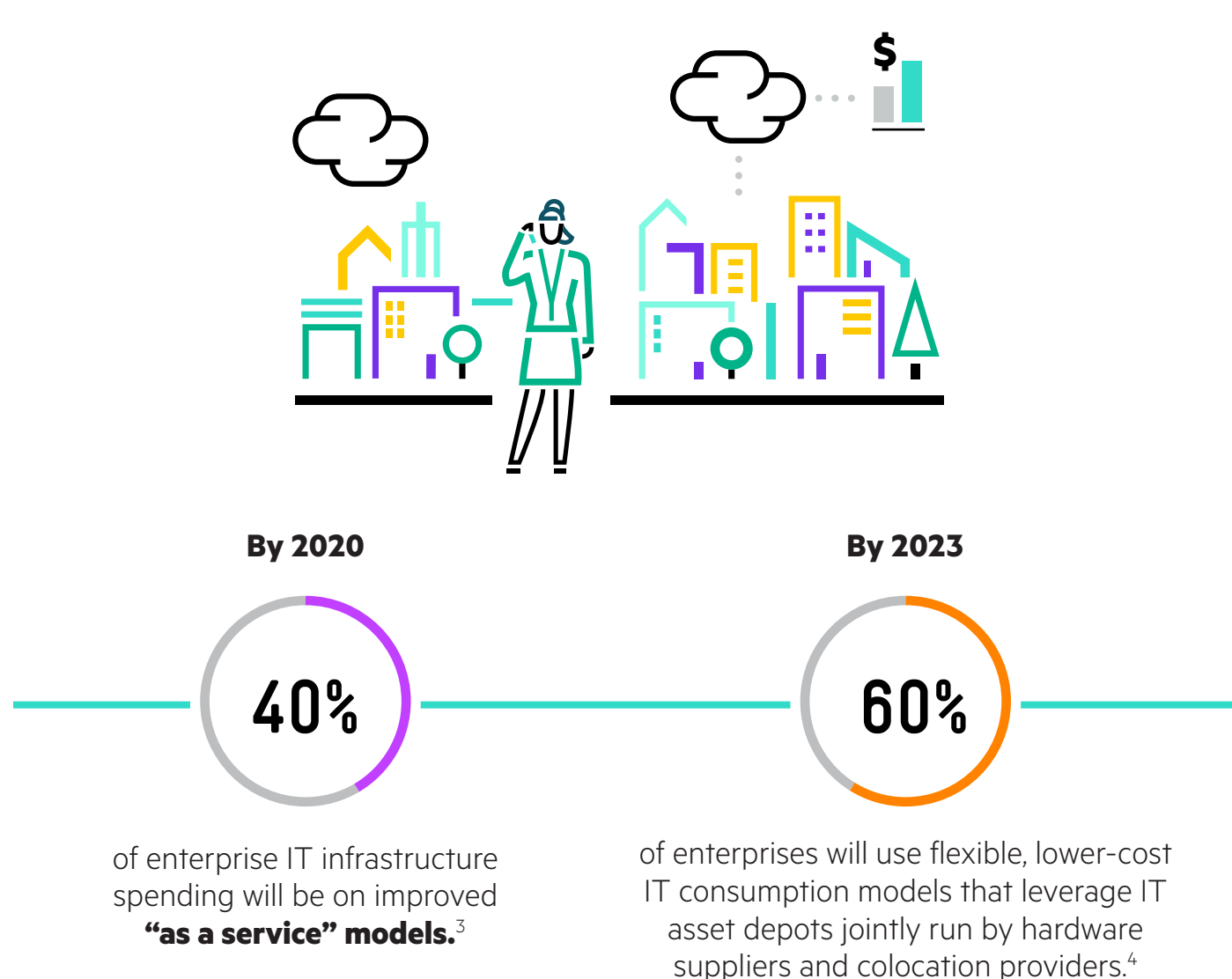
For better control, many businesses opt to keep critical workloads on-premises to effectively manage performance and compliance.



This approach to IT can lead to **capacity-planning issues** that can often affect both performance and the bottom line.²

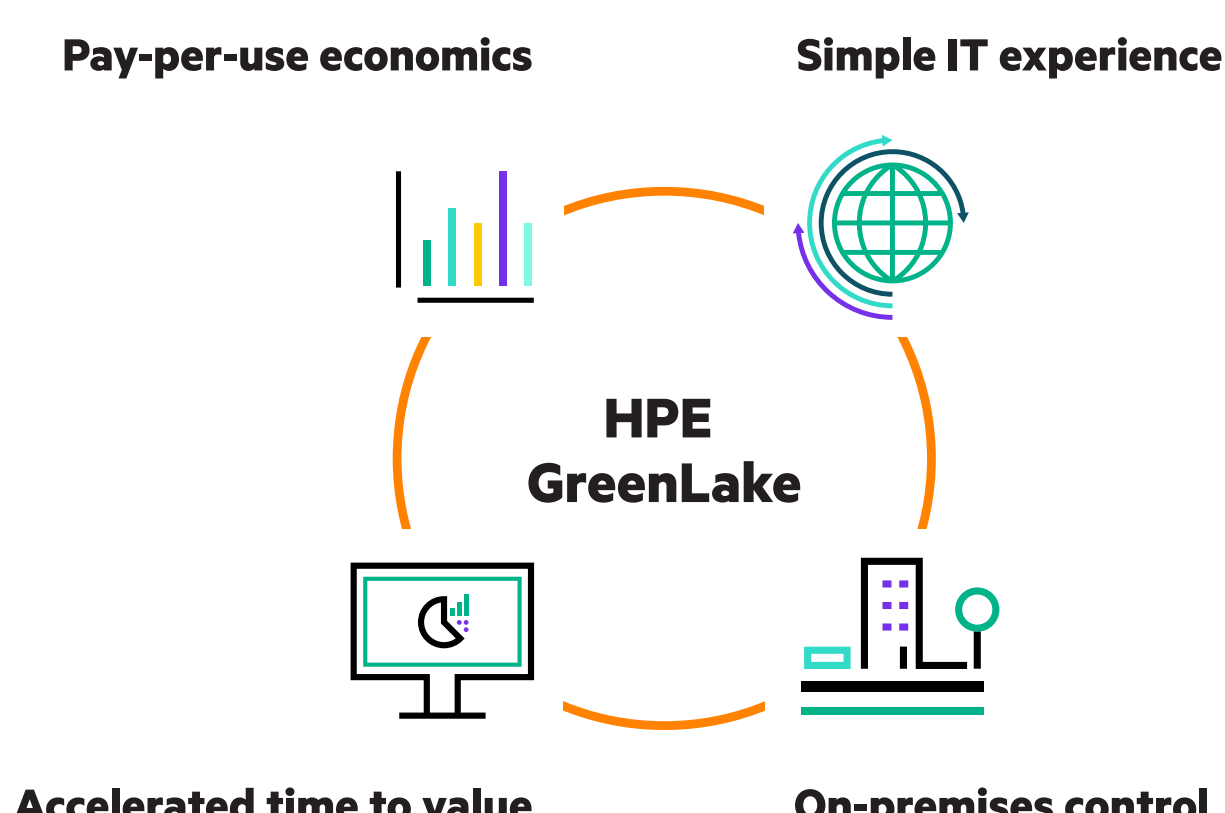


Meanwhile, new consumption models are providing **flexible options for consuming IT.**



Get the business outcomes you need—with the flexibility and economics of public cloud, and the security and control of your on-premises environment—with **HPE GreenLake**

HPE GreenLake delivered by HPE Pointnext Services is a suite of complete IT solutions—such as Big Data, edge computing, database, and more—delivered **on-premises** in a **pay-per-use** model.



The bottom line: Get the **simplicity, agility and economics** of public cloud, and the **security, control and performance** benefits of on-premises IT on **your** terms—with HPE GreenLake.

Take control and simplify your IT experience today. Learn more by visiting: hpe.com/greenlake

¹ Frost & Sullivan 2017 Cloud User Survey.
² Futurum Research, “The Power of Consumption-based On-Premises Services in Meeting Dynamic Storage Demands,” July 2019.
³ IDC FutureScape: Worldwide Datacenter 2018 Predictions, IDC #US43152417, November 2017.
⁴ IDC FutureScape: Worldwide Datacenter 2019 Predictions, IDC #US42582518, October 2018.

